

# CASEY AND DIANA

2023

Stratford  
FESTIVAL



PRODUCTION SUPPORT FOR *CASEY AND DIANA* IS GENEROUSLY PROVIDED BY  
ALAN ROWE & BRYAN BLENKIN AND BY THREE GENERATIONS OF THE SCHUBERT FAMILY.  
SUPPORT FOR THE CREATION OF *CASEY AND DIANA* IS GENEROUSLY PROVIDED BY  
THE FOERSTER BERNSTEIN NEW PLAY DEVELOPMENT PROGRAM.



## WELCOME TO THE STRATFORD FESTIVAL.

It is a great privilege to gather and share stories on this beautiful territory, which has been the site of human activity—and therefore storytelling—for many thousands of years. We wish to honour the ancestral guardians of this land and its waterways: the Anishinaabe, the Haudenosaunee Confederacy, the Wendat and the Attiwonderonk. Today many Indigenous peoples continue to call this land home and act as its stewards, and this responsibility extends to all peoples, to share and care for this land for generations to come.

Stratford  
FESTIVAL

## A MESSAGE FROM OUR ARTISTIC DIRECTOR DUTY VS DESIRE

It has been a cliché of the COVID era that we are living in “unprecedented times.”

But in fact, little in human experience is without precedent. While history never repeats itself exactly, it does present us with endless variations on recurring themes.

Since the dawn of drama, artists have explored those themes on stage. New plays examine who and where we are at this particular time; the classics remind us that we’ve been here before, that our present experience is part of a larger pattern that can be wonderful or profoundly disturbing.

While spanning different centuries, the works on our 2023 playbill all seem to me to reflect in some way the mood of the moment. In particular, they examine an age-old tension highlighted anew by the challenges of the pandemic era: the tension between duty and desire.

That dichotomy is obvious in *King Lear* and *Richard II*, both of which feature monarchs whose personal agendas conflict with their responsibilities to the state—just as we today have had to weigh the desire to follow our hearts against our duty toward our community.

Those who put their responsibilities ahead of their own wishes, as the Princess does at the end of *Love’s Labour’s Lost*, win our admiration. But sometimes what society demands is unreasonable, inappropriate and even destructive, as in the segregationist *Deep South of Wedding Band*, where a perverse interpretation of “duty” is enforced by social stigma. Benedick, in *Much Ado About Nothing*, rather than dutifully supporting his Prince and his comrades in the unmerited condemnation of Hero, follows his own sense of moral duty, impelled by his desire for justice (and, of course, for Beatrice).

Societal expectations are cheekily and cheerfully flouted in *Les Belles-Soeurs* and in *Women of the Fur Trade*, while both *Frankenstein Revived* and *A Wrinkle in Time* invite us to ponder the duties attendant upon the scientific pursuit of knowledge. Using the art of illusion as a metaphor, *Grand Magic* takes a skeptical look at romanticized notions of duty within marriage, while *Monty Python’s Spamalot* satirizes romanticized notions of knightly duty—along with pretty much anything else it can lay its gauntlets on.

*Casey and Diana*, a play inspired by the AIDS crisis, speaks directly to the cost borne by the heroic caregivers of today, whose duty once again consists of risking their own lives to care for others. And in our time of housing crisis, the musical *Rent* once again poses questions about our obligations toward those whose desire is simply for somewhere to live.

Perhaps, as we navigate a world reshaped by the past years of devastation and dislocation, these plays may help clarify for us the importance of finding a balance between pursuing our own wants, needs and dreams and helping others fulfil theirs. Because, to borrow another cliché of our times—and this one surely cannot be denied—we’re all in this together.



Antoni Cimolino  
Artistic Director



# SPONSORS

## OUR THANKS TO THE FOLLOWING FOR THEIR GENEROUS SUPPORT

### PROUD SEASON PARTNERS



### PRODUCTION & PROGRAM SPONSOR



### THEATRE SPONSOR

Support for the 2023 season of the Festival Theatre is generously provided by Daniel Bernstein & Claire Foerster.

### CORPORATE SPONSOR

Support for the 2023 season at the Tom Patterson Theatre.



### PERFORMANCE HOSTS

Burgundy Asset Management  
Café Bouffon & Pazzo Pizzeria  
Famme & Co. Professional Corporation  
Highstreet Asset Management  
Hunter Steel & Supply

Sommers Generator Systems  
Steed Standard Transport Limited  
Stratford School of Interaction Design and Business  
Sylvanacre Properties Ltd.  
The Woodbridge Company Limited

### NEW PLAY DEVELOPMENT

Support is generously provided by The Foerster Bernstein New Play Development Program.

The Stratford Festival gratefully acknowledges the generous support of these contributors to our success.



# THE MEIGHEN FORUM

SUPPORTED THROUGH AN ENDOWED GIFT FROM KELLY & MICHAEL MEIGHEN AND THE T.R. MEIGHEN FAMILY FOUNDATION



## PRIDE WEEK EVENTS



### HIV TODAY

Lazaridis Hall, Tom Patterson Theatre  
Thursday, June 8 | 10:30 a.m.–noon



SEAN ARBUCKLE AND KRISTIN PELLERIN. PHOTOGRAPHY BY TED BELTON.

When Princess Diana visited Toronto's Casey House in 1991, it pushed forward a change in the world's perspective around HIV. A specialty hospital in Toronto providing care for those living with HIV, Casey House helped Canadians come a long way in our understanding of both the medical and social aspects of HIV, and the work still to be done. Join Yasser Ismail; Director of Data Strategy and Knowledge at Casey House, Dr. Gord Arbess Clinical Director, HIV Program at the St. Michael's Hospital Family Health Team and on staff at Casey House and Doris Peltier, a leader in HIV and Indigenous Health research and advocacy to see how HIV care and attitudes in Canada have evolved.

**From \$29.**



### THE REAL POEMS BY ROBERT MCQUEEN

Lazaridis Hall, Tom Patterson Theatre  
June 8–10 | Various times



From inside the lockdowns of 2020, Robert McQueen sat at his kitchen table and wrote about his experiences as a young queer man, living between Vancouver and New York during the AIDS epidemic of the 1980s and '90s. *The Real Poems* is at once spoken witness to the joy of youth and a memorial to the lives of colleagues, lovers and friends lost. An audience Q&A will follow the final performance. **From \$29.**



### CAREGIVERS AND ADVOCATES

Lazaridis Hall, Tom Patterson Theatre  
Friday, June 9 | 10:30 a.m.–noon



Join Andrew Kushnir (director of *Casey and Diana*) along with El-Farouk Khaki (Refugee lawyer, Human dignity and Spiritual Liberation Activist, founder of Salaam: Queer Muslim Community and cofounder and imam: el-Tawhid Juma Circle: The Unity Mosque) and others for a conversation dedicated to the compassionate and devoted caregivers and the tireless work of advocates who have rallied around HIV-positive people, historically and today. **From \$29.**

# CASEY AND DIANA

## PRODUCTION SYNOPSIS

Within the Victorian home-turned AIDS hospice Casey House, residents are beside themselves with excitement at the prospect of spending a moment with one of the world's most famous women: Diana, Princess of Wales. No one is more undone than Thomas, the home's longest-standing resident and far and away the People's Princess's biggest fan. Since learning of Diana's coming visit seven days earlier, Thomas has been painstakingly rehearsing his meeting with the beloved Royal.

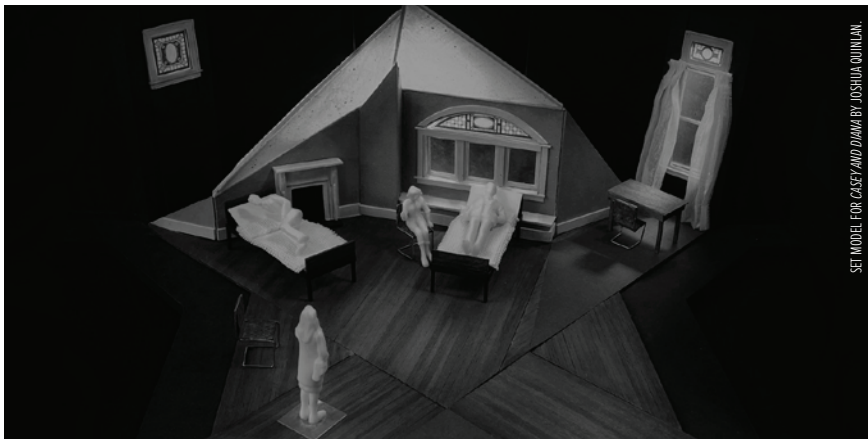
The play opens with Thomas, in his room, on the fateful day. From here, we go back in time through a series of flashbacks that show Thomas welcoming his latest roommate to Casey House, a young man by the name of Andre, alongside caregivers Vera and Marjorie navigating the expectations of residents—each one determined to make it until the princess's visit.

As the day of Diana's visit draws nearer, the dreams, fears and disappointments in the house reach a fevered pitch with Thomas confronted by his own unresolved past. Awash in the hopes and disappointments of a life upturned by AIDS and its stigma, Thomas fights for a humane end to his story, and—in the presence of a princess—discovers new meaning around living and dying with dignity.

When Toronto's Casey House opened in 1988, it was among the first hospices in the world to provide palliative care and support for people living with HIV/AIDS. Three years after its opening, Diana, Princess of Wales, made a historic visit to Casey House that helped change public attitudes towards people living with HIV/AIDS. In a simple gesture of compassion, Diana shook hands with a Casey House resident, who was covered in Kaposi sarcoma lesions—a well-known AIDS-related marking. Within days, the photograph of that touching moment appeared on the front pages of newspapers, putting a human face to a pandemic shrouded in cultural anxiety and homophobia. Nick Green's *Casey and Diana* dramatizes Diana's historic visit—and brings renewed meaning to the snapshot seen around the world.



SEAN ARBUCKLE AND KRISTIN PELLERIN.  
PHOTOGRAPHY BY TED BELTON.



SET MODEL FOR CASEY AND DIANA BY JOSHUA QUINN

# DIRECTOR'S NOTES BY ANDREW KUSHNIR

## A DEFIANT KINDNESS

AIDS is not the antagonist of this play. It would be tempting. After all, it has claimed the lives of over 40 million people since the onset of the epidemic. Nearly 25,000 Canadians have died since this country's first case in March 1982 and no doubt, a number of those who perished would have been mentors of mine; gay men in the theatre who would have been profound influences on my directing, my writing, my navigating the world as a queer artist. I know my dear friend and colleague Nick Green, writer of *Casey and Diana*, shares in my feelings of impoverishment. AIDS is a tempting foe for what it has taken from us and so many of our peers, let alone what it has taken from the parents and lovers and friends still among us who survive those lost. But even a cursory scan through the protest posters of the late '80s and early '90s tells of a different adversary.

**AIDS: where is your rage?**

**AIDS: we need research, not hysteria.**

**SILENCE = DEATH.**

The Human Immunodeficiency Virus (HIV)—precursor to AIDS and the eventual opportunistic infections that prey on a hollowed-out immune system—is not the villain of the story. The villain is how criminally long it took for the world to change. We—our collective humanity—could not muster enough care fast enough to avert disaster and catastrophic loss.

In 1988, while some fearless and ingenious activists tried to catalyze political action, while some intrepid scientists tried to find treatments and cures, while some against-the-grain healthcare professionals tried to sustain those infected and sustain the dignity of those succumbing to AIDS-related illness, there emerged Casey House. It was Canada's first free-standing AIDS hospice, the brainchild of beloved journalist June Callwood. It was different. It was defiant. It wasn't there to put up a fight against AIDS, but to fight something our society had created on its own: the utterly avoidable indignity of a death by AIDS.

As part of our rehearsal process for Nick's powerful new play, I invited two members of the original bereavement team at Casey House, Roberto and Kim, to speak with the cast. Upon being asked why they started volunteering at Casey House in 1990, they told us of visiting a young gay man in one of the hospital AIDS wards in Toronto. The young dying man's food sat cold outside his room, on the floor, because the hospital staff were afraid of bringing it in to him. Upon entering the room (on the other side of signage recommending the donning of a hazmat suit and goggles), Roberto and Kim discovered that all chairs and pieces of furniture were pushed up against the perimeter of the room. The only reason the man had been toilet-ed was because his brother had undertaken the task; the nursing staff having refused to do so for days. The world—our collective humanity and, more specifically, the people of Toronto—had starved a fellow human being of all touch and any basic kindness. It was a social death before a physical one, which American philosopher and political activist Susan Sontag has written so movingly about. Roberto and Kim felt called to volunteer somewhere in the city that could confront this cruelty.

In speaking to Louise Guinand, lighting designer of this production and someone who lost friends in the "plague," I was struck by her saying to me: "Casey House was different than a hospital. Somehow, there, you felt permission to *feel*." So many survivors of that era corroborate the essence of Nick's play—the laughter and life and sense of community people experienced in this AIDS hospice. Writer Timothy Findley, in the foreword of a collection of Casey House remembrances titled *Sanctuary*, shares "a multitude of images—almost like photographs or bits of film in my mind" that exemplify the radically

The Stratford Festival is honoured to provide a space for reflection and facilitated discussion following each performance of *Casey and Diana*. To join us, please exit through the main lobby doors and turn left into the *Casey and Diana* Reflection Space, where several original memorial quilts from Casey House are on display.

different way Casey House was going about death and dying. He recalls “the image of [famed opera singer] Maureen Forrester standing in the second floor corridor one Christmas Eve, leaning back against the wall, eyes closed, her arms folded and both hands resting on her bosom—and the residents’ beds all pulled out in the open doorways up and down the hall so they could hear more clearly as she sang. And what she sang was lullabies.”

And so it doesn’t surprise me that one of the world’s most famous women, a princess, would feel the magnetic pull of this house on the corner of Isabella and Huntley Street in Toronto’s Gay Village. As much as we can behold the so-called “Diana Effect” on Casey House and other marginalized communities that Princess Diana engaged with (a boost in house morale, let alone broader legitimization and publicity), Nick is inviting us to wonder about the “Casey House Effect” on her. I can imagine the moments of wicked gallows humour, the moments of grace, the moments of meaningful silence of which she may have partaken in her one-on-one visits that day. I can imagine that for all that her touch provided each one of those 13 men in that house on October 25, 1991, she too was touched and changed.

We’re coming up on the 32-year anniversary of her historic visit. That may seem a universe away. But we need not look far to see how Casey House, its early years, are not a thing of some distant, unreachable past. It is living memory still. It is all around us. The stories, the relationships, the absences—known and unknown. Roberto and Kim and their fellows-in-care proudly carry stories still. Bob White, the dramaturge of this play, proudly carries the stories still. I have older gay friends and esteemed colleagues at this festival and beyond who continue to metabolize their PTSD and grief from that era. And should we need the echoes and connections to be any more immediate, the part of Marjorie in this production is being played by none other than Linda Kash—Maureen Forrester’s daughter. I believe our proximity to the AIDS epidemic is mostly predicated on our willingness to be aware of it. It has a lot to do with listening, with receiving. AIDS is not over. In even starker terms, UNAIDS reports: “The continent is not on track to achieve an AIDS-free Africa by 2030.”

People living with HIV will be among this play’s audiences. I especially welcome you to this production. You do not house the antagonist of this play in your body but rather something that our world failed for too long to acknowledge, address and mitigate. And this play—albeit living memory for many—is mercifully not the reality for the vast majority of those living long, full lives with treated HIV. And so the invitation of *Casey and Diana*, here in its first encounter with the world, is for us all to honour the revolutionary days of this epidemic.

The kindness, courage and care of Casey House and its heroic nurses and volunteers.

The princess who recognized that.

And with them, and us, honouring the dear residents who sought out—and achieved against all odds—a death that may have come closer to something they’d call good.



SEAN ARBUCKLE AND KRISTIN PELLERIN. PHOTOGRAPHY BY TED BERTON.

## PROGRAM NOTES BY GREGORY ROBINSON, MD

# STANDING UP TO STIGMA

Let me begin this note by saying I hope that by sharing my story, I can impart not just knowledge but a change of heart among this audience. Too much of HIV/AIDS still remains shrouded in a cloud of stigma, and in my experience, stigma blocks knowledge application and excellence in care—critically necessary for compassionate and effective healthcare.

I am an HIV-positive physician, who left my clinical practice in the 1980s out of fear that my patients would judge and avoid me. Still wanting to work in medicine and help people, I returned to school and finished my graduate degree in epidemiology (research on health, wellness and disease) and residency in Public Health and Community Medicine at the University of Toronto. Upon graduation I worked in public health units, and I ended my career in HIV research at Sunnybrook Health Science and teaching and research at the University of Toronto. During my time at school in 1992, I attended and cared for my partner who eventually died of AIDS.

I was forced to pause my career in 2000 due to gastrointestinal bleeding from esophageal varicose. The root cause, though, was cirrhosis, a condition in which your liver is scarred or permanently damaged. In my case this was due to liver clots from years of taking antiretroviral medications used to treat HIV.

The fallout from years of HIV infection and treatments became a theme for myself, like most of us who had AIDS (a breakdown of the immune system). The aging population of those living with HIV/AIDS is, or will be, in need of treatments for chronic diseases associated with years of battling the disease and aging. Today there are people living with and at risk of HIV/AIDS suffering with additional issues. Some of these include: homelessness, poverty, racial discrimination, homo/transphobia, substance use and addiction and mental health problems. These require ongoing risk-reduction counselling, respite care, rehabilitation and, for some, long-term care. The stigma from HIV infection and AIDS is active today against these disenfranchised and marginalized communities and carries the additional risk of new HIV infections and prolonged periods without care leading to AIDS.

I live today because of my fortune in having engaged in many prevention and treatment programs. Through everything, I have experienced lows like so many others diagnosed with HIV/AIDS and highs experienced by too few of those same people. From everything I have experienced and seen, I have learned that stigma kills.

How we are treated in our communities and greater society—by our healthcare providers, by our friends and families, by strangers—this makes all the difference to our engagement, comfort and wellbeing.

I would like to share what AIDS was like for our friends who died of the disease before effective antiretroviral treatments in late 1995. And I would like to tell you about the community response that began early in the epidemic and flourished in the mid to late 1980s with community-based AIDS organizations like Casey House.

Blair, my partner, lay there weakly gasping for each breath as his reserve for life waned.



SEAN ARBUCKLE AND KRISTIN PELLERIN. PHOTOGRAPHY BY TED BERTON.

## PROGRAM NOTES

He was passive—totally dependent on us, his care team, to attend to his every need. His body was grossly distorted with swollen lymph glands that protruded from his emaciated frame. This was AIDS before life-saving medications were discovered in 1995. This and Kaposi's sarcomas—those ugly black-and-purple skin cancers that stood like beacons and announced one's affliction with AIDS—on top of lymphomas, wasting disease, pneumocystis pneumonia and other life-ending and intolerable illnesses.

He had not talked in a day, and although his eyes opened lovingly, one could see the pain held within. He began to suffer as critical symptoms overwhelmed his meek and mild demeanour. Soon, we would lose him. He was 36 years of age.

And I, I would lose my beloved. In grief we, his friends, all wondered who would be next.

Funerals, visitations and memorials were a constant part of my schedule. Some people went to their grave without even being known to have suffered with AIDS. Parents and siblings of those affected were at times absent, owing to homophobia and the fear of AIDS. Year after year friends were buried ... my community was buried.

For people living with HIV our daily losses are great—mental, emotional, cognitive, physical, social, cultural and spiritual. Uncertainty is at the crux of our daily existence. But community is our hope.

During my journey, I witnessed and took part in the GBLTQ and allied community's strong response to the HIV/AIDS epidemic. We began by caring for our own at home. Then, as the 1980s progressed, grassroots organizations like Casey House started up. Like other organizations working in the field, Casey House relied heavily on volunteers to provide education, outreach and service.

When the hospice opened in 1988, it took many supportive, and I dare say activist, volunteers to care for those in need of end-of-life care. With too many requiring these services, Casey House soon became overwhelmed with admissions, in no small part due to the fact that hospitals were not prepared for issues like gay spouses, palliative care in AIDS and the public's fear of catching the disease, which included a number of health professionals. Without the full support of the healthcare system, Casey House staff helped with outreach when beds were not available, connecting with home-care givers to help educate them and provide direction on compassionate care.

Casey House has expanded since then and now provides day care for those living with and at risk of HIV. The epidemic, too, has changed with development in treatments—yet the stigma and challenges remain. Challenges like street drug use, homelessness, poverty, mental illness and marginalization of racialized communities. Within groups affected by these factors, HIV progresses to AIDS without adequate care. To help address this, the inpatient unit at Casey House, while still providing end-of-life care, also offers rehabilitation, transitional and respite care. All this helps prevent infection and keeps people living with HIV well.

Casey House has evolved in response to the HIV epidemic. It is still following patient and community needs in the provision of services that keep us as well as we can achieve. By doing this, Casey House is a light of hope.

All of you, too, can be a light. Stand up to stigma; confront irrational fears and educate others around you about HIV/AIDS and the many cultural and social issues that predispose one to HIV infection and AIDS. And, if you know someone affected by the disease, please remember, a kind gesture goes a long way.

**Dr. Greg Robinson is a multi-faceted supporter of Casey House: a clinical volunteer, medical student mentor, peer chef for June's HIV+ Eatery, Positively Speaking podcast guest, donor and has been a day health program client.**



COSTUME DESIGNS FOR PRINCESS DIANA BY JOSHUA OUBLAN.

PLAYWRIGHT: CASEY AND DIANA

## NICK GREEN

Nick Green is a Dora Mavor Moore and Elizabeth Sterling Haynes Award-winning playwright based in Toronto. As a writer, Nick strives to create big, imaginative stories that provoke thought and conversation, foster connection, and hopefully make people laugh from time to time.

Nick's play *Body Politic* was the recipient of the Dora Mavor Moore Award for Outstanding New Play; General Theatre in 2017. This play reimagined the history of Canada's seminal queer newspaper *The Body Politic*, while exploring themes of intergenerational relationships, loss, and memory. *Body Politic* was co-produced by lemonTree Creations and Buddies in Bad Times Theatre.

Other recent playwriting credits include *Every Day She Rose* (co-written with Andrea Scott, produced by Nightwood Theatre); *Happy Birthday Baby J* (produced by Shadow Theatre, developed with Factory Theatre); *Dinner with the Duchess* (Next Stage Festival, recipient of BroadwayWorld Toronto Award); and *Coffee Dad*, *Chicken Mom*, and the *Fabulous Buddha Boi* (produced by Guys in Disguise, recipient of a Sterling Award).

As a book writer, Nick has also worked on many exciting new musicals. Most recently, *Dr Silver: A Celebration of Life* (music and lyrics by Britta and Anika Johnson) was presented at South Coast Repertory Theatre in California. *In Real Life* (music and co-lyrics by Kevin Wong) was presented at the Canadian Music Theatre Projects and is in development with the Musical Stage Company. Other favourite credits include both *Living the Dream* and *Fangirl* (music and lyrics by Anika Johnson and Barbara Johnston); *Poof! The Musical* (music by Darrin Hagen, Sterling Award nomination); and *The Curse of Pigeon Lake* (music by Joel Crichton).

During the pandemic, Nick created the Social Distancing Festival ([socialdistancingfestival.com](http://socialdistancingfestival.com)), an online platform that featured the work of over 300 artists from around the world who had projects cancelled due to COVID. This website, which has been inducted into The Library of Congress, has been featured by multiple international media platforms, including *The New York Times*, BBC, CBC, CNN, *Time Out Dubai*, PRI's *The World*, *The Hindu*, *The Stage*, and more. For his work on the Social Distancing Festival, Nick was named as one of the year's "Pandemic Heroes" by *Toronto Life* Magazine, and one of "10 Canadian Heroes who have used arts and culture to get us through the pandemic" by The Canadian Broadcasting Corporation.

Nick is a graduate of the BFA Acting Program at the University of Alberta and is proud to be represented by Marquis Literary.



Since 1988, those who pass away in Casey House's care are commemorated each year through a volunteer-created memorial quilt. These quilts are lovingly designed and sewn by a team of Casey House volunteers, with each quilt memorializing those who passed away within a twelve-month period.

To learn about the role of quilts in the AIDS movement and see a selection of Casey House memorial quilts, visit the Reflection Space in Rehearsal Hall Four, which will be open after each performance of *Casey and Diana*. The Reflection Space may be accessed by exiting through the main lobby doors and turning left once outside the theatre.

# CASEY AND DIANA

## CASEY AND DIANA

BY NICK GREEN

WORLD PREMIÈRE

A STRATFORD FESTIVAL COMMISSION

### THE CAST

IN ALPHABETICAL ORDER

THOMAS  
SEAN ARBUCKLE

PAULINE  
LAURA CONDLLN

MARJORIE  
LINDA KASH

ANDRE  
DAVINDER MALHI

DIANA  
KRYSTIN PELLERIN

VERA  
SOPHIA WALKER

THERE WILL BE A  
**20-MINUTE**  
INTERVAL

#### AUDIENCE ALERT

This production includes mature themes and coarse and profane language.

### ARTISTIC CREDITS

Director **Andrew Kushnir**

Designer **Joshua Quinlan\***

Lighting Designer **Louise Guinand\***

Composer and Sound Designer **Debashis Sinha\***

Dramaturge **Bob White**

Supervising Fight Director **Geoff Scovell**

Producer **David Auster**

Casting Director **Beth Russell**

Creative Planning Director **Jason Miller**

\* Indicated designers are members of the Associated Designers of Canada, IATSE Local ADC659.

Assistant Director  
**Damon Bradley Jang**

Assistant Set Designer  
**Katriona Dunn**

Assistant Costume Designer  
**Barbara Moronne-Sanchez**

Assistant Lighting Designer  
**Aidan Jackson-Hoag**

Stage Manager  
**Michael Hart**

Assistant Stage Manager  
**Sam Hale**

Apprentice Stage Manager  
**Cassie Westbrook**

Production Assistant  
**Emma Jo Conlin**

Production Stage Manager  
**Michael Hart**

Technical Director  
**Tristan Goethel**

### ACKNOWLEDGEMENTS

Special thanks to the staff of Casey House, **Dr. Gregory Robinson**, **Dr. Jennifer Anderson**, MD, MSc, FRCSc, St. Michael's Hospital, Toronto; **Darcy Trefiak**, PT, B.Sc.P.T., FCAMPT, Physiotherapy Alliance, Stratford; **Marilyn Holmes**, PT; **Dr. Simon McBride**, MCISC, MD, London Health Sciences Centre - Vocal Function Clinic; **Fowler-Kennedy Sports Medicine Clinic**, London; **Dr. Brian Hands**, MD, FRCSc, Vox Cura - Voice Care Specialists, Toronto; **Dr. Leigh Sowerby**, MD, MHM, FRCSc, St. Joseph's Hospital, London; **Dr. John Yoo**, MD, Dean of the Schulich School of Medicine and Dentistry - London Health Sciences Centre; **Dr. Thomas Verry**, MD, DHL, DPsych, FRCPC, FAPA, Stratford; **Dr. Christine Ly**, MD, Stratford, **Dr. P. Neilsen**, Goderich; **Dr. Laurel Moore**, MD, **Dr. Sean Blaine**, MD, **Dr. Erin Glass**, MD, **Dr. Jacob Matusinec**, MD, STAR Family Health Team, Stratford & **Dr. David Thompson**, MD, Stratford. Pianos tuned and maintained by **Stephenson Concert Group**.

*Casey and Diana* is produced by permission of the Playwright and Marquis Literary (Colin Rivers) [www.MQlit.ca](http://www.MQlit.ca).

Nick Green is a member of the Playwrights Guild of Canada.

### THANKS

The artists and production team wish to thank: **Joanne Simons**, **Jane Darville**, **Rabbi Arthur Bielfeld**, **Jim Donovan**, **Gloria Murrant**, **Erika Epprecht**, **Lisa McDonald**, **Ken Harvey**, **Dr. Edward Kucharski**, **Dr. Kevin Gough**, **Hugh Brewster**, **Matthew Jocelyn**, **Rick Archibald**, **Kim Chiotti**, **Roberto Chiotti**, **Dr. Gregory Robinson**, **Anne Allan**, **Beth Russell**, **Robert McQueen**, **Denis Charette**, **Liz Creal**, **Alanna Scott**, **Bernard Finnigan**, **Rossen Lee**, **Casey Sabawi** and **Fife House**.

We wish to thank the following artists who participated in the development of this play: **Ada Aguilar**, **Sean Arbuttle**, **Maev Beaty**, **Noah Beemer**, **Nadien Chu**, **Laura CondlIn**, **Sergio di Zio**, **Rosemary Dunsmore**, **Sara Farb**, **Elodie Gillett**, **Andrew Kushnir**, **Nicolas Mencia**, **André Morin**, **Denise Oucharek**, **Krystin Pellerin**, **Khadijah Roberts-Abdullah**, **Brenda Robins**, **Maria Vaccratsis**, **Bob White** and **Blythe Wilson**.



SEAN ARBUCKLE AND KRYSTIN PELLERIN. PHOTOGRAPHY BY ISABELA STILLE-CURTIS.

## MUSIC

Music recorded by  
**Debashis Sinha**

Director of Music  
**Franklin Brasz**

Music Administrator  
**Janice Owens**

## BACKSTAGE

Head Stage Carpenter  
**Alex Maitland**

Head Sound  
**Melissa Renaud**

Swing  
**Lela Stairs Murphy**

Head Electrician  
**Sean Poole**

Wardrobe Head  
**Lela Stairs Murphy**

Wigs and Makeup Head  
**Melissa Veal**

Head Property  
**Jennifer Schamehorn**

Wardrobe Show Head  
**Caroline Broadley**

## PRODUCTION CREDITS

Director of Production  
**Simon Marsden**

Production Administrator  
**Miranda Forbes**

Technical Assistants  
**Kendalin Bishop**

Associate Director of  
Production  
**C.J. Astronomo**

Scene Shop Manager  
**Sean Hirtle**

**Holly Calnan**  
**Red Hauser**  
**Fraser MacKinnon**

Production Administrative  
Assistant  
**Christin Bossenberry**

Technical Director  
– Scenic Construction  
**Andrew Mestern**

Transportation  
**Greg Lamure**  
**Dirk Newbery**  
**Mike Peleshok**  
**James Thistle**

Associate Technical Director  
**Andrew Clemens**

Head of Design  
**Michael Walton**

Design Coordinator  
**CS Fergusson-Vaux**

Technical Management  
Assistant  
**Kimbra Young**

## PROPERTIES

Head of Properties  
**Dona Hrabluk**

**Jennifer Macdonald**  
**Nina Mueller**  
**Dylan Mundy**  
**Danielle Poirier**  
**Lee Summers**  
**Katelyn Vere**  
**Colin Welsh**

Properties Buyer  
**Kathleen Orlando**

Assisted by  
**Matthew Burgess**  
**Michelle Jamieson**  
**Emma Keenan**  
**Shirley Lee**

Assistant Properties Buyer  
**Sarah Renner**

## SCENIC ART

Head Scenic Artist  
**Duncan Johnstone**

Assistant Head Scenic Artist  
**Michael Wharran**

Assisted by  
**Thomas Lappano**  
**Blair Yeomans**

## CONSTRUCTION CARPENTRY

Head Carpenter  
**Ryan Flanagan**

Assisted by  
**Shayne Adair**  
**Simon Aldridge**

**Scott King**  
**Corey Mielke**  
**John Roth**  
**Jody Satchell**  
**Scott Schmidt**  
**Mark Smith**  
**Cliff Tipping**

Assistant Head Carpenter  
**Paul Cooper**

**Jeff Buck**  
**Jeremy Cox**  
**Chad Hunt**  
**Paul Hyde**

Head of Automation  
**Ian Phillips**

## COSTUME & WARDROBE

Costume Director  
**Michelle Barnier**

Sewers  
**June Gunn**  
**Eli Jorgensen**  
**Colleen McCutcheon**  
**Georgina Schinkel**  
**Anna Yaworski**

Paint and Dye  
**Sylvia Minarcin**  
**Linda Pinhay**

Heads of Wardrobe  
**Kimberly Catton**  
**Caitlin Luxford**  
**Dana Osborne**

Bijoux/Decoration  
**Tami MacDonald**

Assisted by  
**Penelope Schledewitz**

Costume Coordinator  
**Lilian Gibson**

Assisted by  
**Liane Guttadauria**  
**Kathi Posliff**

Millinery  
**Monica Viani**

Costume Buyers  
**Jennifer Smith-Windsor**  
**Erin Michelle Steele**

Boots and Shoes  
**Connie Puetz**

Assisted by  
**Thea C. Crawford**  
**Kaz Maxine**

Junior Costume Buyer  
**Melonie Hamilton**

Assisted by  
**Sarah Cook**  
**Michael Karn**  
**Laura Wemyss**

Wardrobe Apprentice  
**Holly Matthews**

Cutters  
**Kim Crossley**  
**Lela Stairs Murphy**

Crafts Apprentice  
**Brendan Riley**

First Hands  
**Karen Merriam**  
**Patricia Taylor**

## WAREHOUSE

Warehouse Coordinators  
**Sandy Davis**  
**Jennie Wonnacott**

## WIGS & MAKEUP

Head of Wigs and Makeup  
**Gerald Altenburg**

Construction Crew  
**Teddi Barrett**  
**Tracy Frayne**  
**David Kerr**  
**Angela Moncur**  
**Sherri Neeb**

**Barb Newbery**  
**Mallory Reeves**  
**Julie Scott**  
**Chris Vaughan**  
**Melissa Veal**

Head of Wigs and Makeup –  
Festival  
**Tracy Frayne**

*For the safety of the artists and in accordance with the intellectual property associated with the productions, all cameras, audio and video recorders must be turned off during the performance.*



# ACTING COMPANY

# THE STORY OF CASEY HOUSE

FOR EACH TICKET SOLD TO *CASEY AND DIANA*, \$5 WILL BE DONATED TO CASEY HOUSE.

## A WELCOMING PLACE TO DIE WITH DIGNITY FREE FROM JUDGEMENT

Casey House was founded by a group of intrepid volunteers led by activist and journalist June Callwood, as Canada's first stand-alone facility for people living with HIV/AIDS, and Ontario's first free-standing hospice. The doors first opened in 1988 during the height of the AIDS epidemic, in close proximity to Toronto's Gay Village. At that time, people living with HIV were typically ostracized from family and friends and were often left to die alone. In contrast, Casey House believed their clients deserved dignity, compassion and respect. The first client was greeted with a warm hug, it was the first time he had been touched in months. This approach was emulated by Princess Diana during her iconic visit to Casey House on October 25, 1991 in a photo seen around the world: the princess touching someone living with HIV.

## LEADERS ADVANCING HIV HEALTH CARE

As medical advances improved HIV treatment and outcomes, Casey House has evolved and grown from a hospice into a specialty hospital providing ground-breaking care to people living with and at risk of HIV. In 2017, they moved across the street into a light-filled 58,000 sq. ft. facility. Just as in their first home, they provide a community and sense of belonging that connects people to care they may not have been able to access elsewhere. As leaders advancing HIV health care, they offer new services to meet the changing and complex needs of clients. In addition to a 14-bed inpatient unit for people requiring 24/7 medical care, there is a robust outpatient program for people who can benefit from a range of health services and social supports. The clinical team builds relationships through a harm reduction approach, and in 2021, opened Ontario's first hospital-based supervised consumption service for clients who use substances. Building on a legacy of advocacy and social justice, they actively dismantle barriers to care and safe living. The humanity of each client is at the heart of everything they do.



### SEAN ARBUCKLE (he/him)

**2023:** Thomas in *Casey and Diana* and Blind Man in *Frankenstein Revived*. 21st season. **Stratford (selected):** *Richard III*, *Serving Elizabeth*, *Guys and Dolls*, *Julius Caesar*, *42nd Street*, *A Little Night Music*, *The Neverending Story*, *Pericles*, *King John*, *The Pirates of Penzance*, *Titus Andronicus*, *Three Sisters*, *The Merchant of Venice*, *Cabaret*, *Trojan Women*, *The Tempest*, *As You Like It*, *Timon of Athens*, *The Swanne: Princess Charlotte*, *Macbeth*, *London Assurance*, *Twelfth Night*, *Who's Afraid of Virginia Woolf?*. **Elsewhere (selected):** *Serving Elizabeth* (Theatre Aquarius); *The Immigrant* (Harold Green); *London Road* (Canadian Stage, Dora Award); *Othello* (Segal Centre); *The Winter's Tale* (McCarter/Shakespeare Theatre); *Humble Boy* (Pioneer Theatre); *Phèdre* (ACT); *The Spitfire Grill* (George Street); *A Christmas Carol*, *The Turn of the Screw* (Grand Theatre); *The Importance of Being Earnest* (Roundabout); *Copenhagen* (national tour). **Film/TV:** *12 Monkeys*, *Mayday*, *Murdoch Mysteries*, *Dark Matter*, *Reign*, *Defiance*, *Law & Order*. **Training:** Juilliard.



### LAURA CONDLAN (she/her)

BIRMINGHAM CONSERVATORY, 2004

**2023:** Pauline in *Casey and Diana* and Mary Shelley in *Frankenstein Revived*. 15th season. **Stratford (selected):** Emilia (*Othello*), Irene Malloy (*The Matchmaker*), Mistress Page (*The Merry Wives of Windsor*), Mrs. Darling (*Peter Pan*), Ashley (*The Virgin Trial*), Chrysothemis (*Elektra*), Helena (*A Midsummer Night's Dream*), Audrey (*As You Like It*), Chorus Leader (*Bakhtai*). **Elsewhere (selected):** *15 Dogs* (Crow's); *goldfish* (Here For Now), *Fun Home* (Mirvish/Musical Stage Company), *A Delicate Balance*, *Idomeneus*, *The Heidi Chronicles*, *The Heidi Chronicles*, *Of Human Bondage*, *The Crucible*, *The Norman Conquests* (Soulpepper); *An Enemy of the People*, *Sextet* (Tarragon); *Chimerica* (Canadian Stage/MTC); *THIS*, *Beckett: Feck It!* (Canadian Stage); *Top Girls* (Segal Centre); *4:48 Psychosis* (Necessary Angel). **Awards:** Dora nominee/winner, two time Toronto Theatre Critics award winner. **Film/TV:** *The Players* (dir. Sarah Galea-Davis), *Wilfred* (dir. Samuel Davey), *The Lake* (Amazon), *Nurses* (Global), *Murdoch Mysteries* (CBC). **Et cetera:** For Jnr, thank you.



### LINDA KASH (she/her)

**2023:** Marjorie in *Casey and Diana*. Stratford debut. **Elsewhere (selected):** *Light* (Tarragon); *Caroline, or Change* (Musical Stage); *Day After Day* (Blue Bridges); *Every Brilliant Thing* (New Stages, director); *Becoming Dr. Ruth* (Harold Green). **Film/TV/Voiceover (selected):** *Fargo*, *Batwoman*, *Seinfeld*, *Cinderella Man*, *Philly Angel* (for over 26 years), *Hotel Transylvania*, *Thomas the Tank Engine*, *Fugget About It*, *Love It or List It* (Director). **Training:** Second City, Banff Centre, American Academy of Dramatic Arts. **Awards:** Gemini, ACTRA, Canadian Comedy, L.A. Times. **Teaching:** Co-Founder of Peterborough Academy of Performing Arts. Also teaches Performance and Public Speech at Wilfrid Laurier University. **Online:** lindakash.ca, klusterfork.com. **Et cetera:** Beyond thrilled to be here and to share this story about a place and time that changed things forever. This one's for you, Mom.



### DAVINDER MALHI (he/they)

**2023:** Andre in *Casey and Diana*. Stratford debut. **Elsewhere:** *No Big Deal* (Roseneath Theatre); *rihannabi95* (Young People's Theatre); *Towards Rebirth* (Shakespeare in the Ruff); *Concord Floral* (Canadian Stage). **Web series/TV:** *Gay Mean Girls* (Web series/Heyishi Zhang); *Fan Club* (Web series/Second Adolescence Prod.); *Fellow Travelers* (Showtime). **Training:** York University's Acting Conservatory. **Online:** @davinder.pdf. **Et cetera:** I'm so grateful for my family and friends, and the wonderful team at 10 Talent. This is truly a dream come true.



### KRYSTIN PELLERIN

**2023:** Diana in *Casey and Diana*. Third season. **Stratford:** Lady Macbeth in *Macbeth*, Maggie in *Bunny*, Joyce in *Possible Worlds*. **Elsewhere:** Electra in *Orestes* (Tarragon); Cathleen in *Long Day's Journey Into Night*, Debbie in *The Real Thing*, Emily in *Our Town*, Mary Snow in *Salt-Water Moon* (Soulpepper); Nellie in *Floyd Collins* (Patrick St. Productions/Talk Is Free); Carol in *Oleanna* (Sweetline Theatre). **Film/TV:** Anne Boleyn in *Reign* (CW). Series lead: Leslie Bennett in *Republic of Doyle*, *Murdoch Mysteries* (CBC), *The Tudors* (Showtime/CBC), *Hudson & Rex* (CityTV). **Training:** National Theatre School of Canada. **Awards:** Canadian Screen Award nomination: Best Actress in a Dramatic Series, *Republic of Doyle*. Jessie Award nomination: Best Supporting Actress in a Musical, *Floyd Collins*. **Online:** @krystinpellerin Twitter/Instagram. **Et cetera:** Love to my beautiful family xo.

# ACTING COMPANY



## SOPHIA WALKER

BIRMINGHAM CONSERVATORY, 2005

**2023:** Vera in *Casey and Diana*. 12th season. **Stratford (selected):** Lady Gertrude in *An Ideal Husband*, Calpurnia in *To Kill A Mockingbird*, Mistress Ford in *Merry Wives...* and Sybil in *Private Lives*. **Elsewhere:** Frances Mellinship in *Just to Get Married*, Black Mary in *Gem of the Ocean* (Shaw Festival); *The Bridge* (2b/Neptune Theatre); *Blood Wedding*, *Jitters*, *The Heidi Chronicles* (Soupepper); Salima in the Dora Award-winning *Ruined* (Obsidian Theatre); *Our Place* (Cahoots Theatre). **Film/TV (selected):** *The Marsh King's Daughter* (Neil Burger); *Handmaid's Tale* (MGM/HULU); *The Mayor of Kingstown* (Paramount); *Star Trek: Strange New Worlds* (CBS); *Designated Survivor* opposite Kiefer Sutherland (ABC) and feature film *Born to be Blue* opposite Ethan Hawke (New Real); recurring roles on *The Divide* (AMC), *Y:The Last Man* (Hulu) and the award-winning web series, *Carmilla*. **Training:** Ryerson University, Canadian Film Centre's Actor's Conservatory.

A member of the Professional Association of Canadian Theatres, the Stratford Festival engages, under the terms of the Canadian Theatre Agreement, professional artists who are members of Canadian Actors' Equity Association.

Stage crew, scenic carpenters, drivers, wigs and makeup attendants, wardrobe attendants, facilities staff and audience development representatives are members of Local 357 of the International Alliance of Theatrical Stage Employees (IATSE).

Scenic artists are members of IATSE Local 828.

The musicians, musical directors, conductors, and orchestra contractors engaged by the Stratford Festival are members of the Toronto Musicians' Association, Local 149 of the American Federation of Musicians of the United States and Canada.



Associated Designers of Canada



ENTERTAIN IN



The Festival offers the perfect setting to host all of your elegant events—from cocktail receptions to formal dinners and casual buffets.

**CREATE THE CUSTOM EVENT OF YOUR DREAMS!  
CONTACT EVENTS@STRATFORDFESTIVAL.CA**

PHOTOGRAPHY BY MICHAEL STEINGARD

# THE BIRMINGHAM CONSERVATORY

Director of the Birmingham Conservatory Janine Pearson leads this intensive professional training program that nurtures and develops artists for their careers in live theatre.

For acting participants, this program includes classes in voice, movement and text with Festival coaches and distinguished guest instructors. In addition, the non-acting participants will also receive individual instruction and mentorship in the field of their specialization.

The Birmingham Conservatory is made possible by the support of the Birmingham family, the Stratford Festival Endowment Foundation and the Department of Canadian Heritage. The appearance of members of the Birmingham Conservatory in *Love's Labour's Lost* is generously supported by The Marilyn and Charles Baillie Fund and by Alice & Tim Thornton.

## BIRMINGHAM CONSERVATORY PARTICIPANTS INCLUDE THESE MEMBERS OF OUR 2023 COMPANY:

Elizabeth Adams 2022/23	Jordin Hall 2017/18	Qianna MacGilchrist 2022/23	Andrew Robinson 2012/13
Celia Aloma 2022/23	Andrew Iles 2017/18	Devin MacKinnon 2017	Tyrone Savage 2010/11
Laura Condlin 2004	Damon Bradley Jang 2022/23	Kennedy C. MacKinnon 1999 (co-head of coaching)	André Sills 2005
Aidan deSalaiz 2006	Paul de Jong 2000	Jonathan Mason 2019/21	E.B. Smith 2010/11
Ijeoma Emesowum 2015/16	(co-head of coaching)	Chris Mejaki 2022/23	Shannon Taylor 2014
Martha Farrell 2004 (coach)	Wahsontio Kirby 2022/23	Gordon S. Miller 2002	Amaka Umeh 2019/21
Jonathan Goad 1999	Josue Laboucane 2012/13	Chanakya Mukherjee 2022/23	Emilio Vieira 2015/16
Adrienne Gould 2002 (movement coach)	Beck Lloyd 2019/21	Micah Woods 2019/21	Sophia Walker 2005
Christo Graham 2022/23	Jamie Mac 2013/14		Hannah Wigglesworth 2022/23

# THE LANGHAM DIRECTORS' WORKSHOP

Led by Langham Workshop alumnus Esther Jun, Director of the Langham Directors' Workshop and Artistic Associate for Planning, this program provides promising directing talent the resources to explore, play and hone their craft.

The Workshop endeavours to help nurture emerging and mid-career directors' interests, refine their aesthetics, and enable them to create inspired and boundary-pushing work, not only for the Stratford Festival's stages, but across the globe.

## PARTICIPANTS THIS SEASON:

Thomas Alderson  
Kelly Daniels  
Chantelle Han  
Chris Lam  
Christopher Manousos  
Jay Northcott  
Kwaku Okyere  
Matthew Paris-Irvine

## ALUMNI THIS SEASON:

Thomas Morgan Jones  
Esther Jun  
Andrew Kushnr  
Peter Pasyk  
Lezlie Wade

We extend our thanks to the Department of Canadian Heritage and to the Philip and Berthe Morton Foundation.



Sponsor, The Langham Directors' Workshop. Our thanks to RBC Foundation.

# THE FEMINIST EXPANSION OF THE WESTERN CANON

Hannah Rittner was curator-in-residence for the Festival in 2020-2022 with the support of the Canada Council for the Arts. In this role, she read, researched and selected 400-plus plays written by women between the 17th and 21st centuries to create a research project entitled "The Feminist Expansion of the Western Canon," in which she seeks to transform the Western theatrical canon so that it may include and celebrate the female gaze.

# ARTISTIC COMPANY



## KATRIONA DUNN

**2023:** Assistant set designer of *Casey and Diana* and *Women of the Fur Trade*. Stratford debut. Katriona Dunn is a theatre designer, technician, and creator. She recently graduated with distinction from the University of Calgary's drama program. During her time at the university, she worked as an assistant designer on *We The Same* and *Formations*, as costume designer on *Horse Girls*, and as designer for *Wagonstage* and co-designer for *Pro Series II: Just Breathe, Okāwimāwaskiy*. After graduation, she was assistant costume designer at Vertigo Theatre with *Murder on the Orient Express*, and at MacEwan University with *Company*. In 2022, she was recognized with the Macdonell award in Performing Arts and the Marilyn Perkins award in Performing Arts. @kdunn.designs.



## LOUISE GUINAND

**2023:** Lighting designer of *Les Belles-Sœurs* and *Casey and Diana*. 37th season. **Stratford:** Over 70 productions including *All's Well That Ends Well*, 1939, Edward Albee's *Three Tall Women*, *Henry VIII*, *Julius Caesar*, *Twelfth Night*, *Romeo and Juliet*, *All My Sons*. Ms. Guinand is delighted to be designing at Stratford. **Elsewhere:** Ms. Guinand has designed lights for over 550 shows across Canada and the United States. Recent productions include *Post-Democracy* (Tarragon); *Into the Woods* (Grand); *Charley's Aunt*, *Rope* (Shaw); *Cinderella*, *I Call Myself Princess* (Globe); *Pinocchio* (YPT). **Training:** A graduate of Queen's University and the National Theatre School. **Awards:** One Dora Award. Multiple award nominations across Canada. Louise was the recipient of the 2018 Bradley Garrick Guthrie Award. **Affiliation:** Member of ADC659. **Other:** Louise is within seven Shakespeares of achieving her desire to light the entire Shakespearean canon.



## SAM HALE (he/him)

**2023:** Assistant stage manager of *Casey and Diana*. Fourth season. **Stratford:** *All's Well That Ends Well*, *Death and the King's Horseman*, *Little Shop of Horrors*. **Elsewhere:** *Prodigal*, *Entrances & Exits*, *The Home Project*, *Casimir and Caroline*, *The Wolves*, *Lemons...*, *52 Pick-Up*, *The Glass Menagerie* (The Howland Company); *Ma Rainey's Black Bottom*, *Picture This*, *Parfumerie*, *Riverboat* (Soulpepper); *Jerusalem*, *Mr. Burns* (Outside the March); *Disgraced* (Mirvish/Citadel/Hope & Hell); *The Other Place*, *The Judas Kiss*, *Hedwig and the Angry Inch*, *Into the Woods* (Talk Is Free); *Fall for Dance North* (FFDN/TO Live); *Body Politic* (Buddies in Bad Times/lemonTree Creations). Sam has also worked for Toronto Metropolitan University, TIFF and Hot Docs. **Et cetera:** Sam would like to thank his friends, family, mentors and Nic for all their love and support.



## MICHAEL HART

**2023:** Production stage manager of the Studio Theatre and stage manager of *Casey and Diana*. 27th season. **Stratford:** 27 seasons including *All's Well That Ends Well*, *Little Shop of Horrors*, *The Rocky Horror Show*, *The Tempest* starring Christopher Plummer, *The Duchess of Malfi*, *The Swanee Trilogy* amongst others. **Elsewhere:** Most recently *Fall On Your Knees* (Canadian Stage, Neptune, NAC, Grand); *Heisenberg*, *Liv Stein* (Canadian Stage); *Constellations* (Centaur/Canadian Stage); *Body Politic* (Buddies); *The Death of the King* (Modern Times); *The Winter's Tale* (Groundling); *Bombay Black* (Factory); *Manon*, *Sandra and the Virgin Mary* (Pleiades); *Saint Carmen of The Main* (NAC/Canadian Stage); *Romeo and Juliet* (NAC); *Mother Courage and Her Children* (NAC/MTC); *Real Live Girl* (MTC); *Fully Committed*, *Silence*, *Einstein's Gift* (Grand); *Wit* (Centaur); *Hamlet* (Neptune).



## AIDAN JACKSON-HOAG

**2023:** Assistant lighting designer of *Casey and Diana*, *Women of the Fur Trade* and *Love's Labour's Lost*. Stratford debut. **Elsewhere:** *Six People Die in This Show* (dead end); Devised Theatre Festival, *Love in the Time of Werewolves* (York University); *Good Morning, Birdgeoise* (PlayGround Festival 2022). **Training:** York University Theatre Design (June 2023).



## DAMON BRADLEY JANG

**BIRMINGHAM CONSERVATORY, 2022/23**  
**2023:** Assistant director of *Casey and Diana*. Second season. **Stratford:** *All's Well That Ends Well*. **Elsewhere:** Co-artistic/marketing director: Fabulist Theatre, Vancouver, BC. Director: *Once on This Island* (and associate choreographer), *Dracula*, *Songs for a New World* (co-director/choreographer) (Fabulist Theatre); *Everybody Loves Dick* (OR Festival); *Quantum Entanglement* (BurlOak New Stages Festival); *Cinderella: Broadway Edition*, *Oliver!* (Byrne Creek). Associate director/choreographer: *Cockroach* (world premiere, Tarragon); *Into the Woods* (North Shore Light Opera). Assistant director: *The Sound of Music* (assistant choreographer, Drayton Entertainment); *Beneath Springhill* (Arts Club). Choreographer: *Little Shop of Horrors* (Vagabond Players); *As You Like It* (Bard in the Valley). Actor: *West Side Story*, *Singin' in the Rain* (TUTS); *Thoroughly Modern Millie* (Gateway Theatre); *Flower Drum Song* (NACT); *A Midsummer Night's Dream*, *The Trojan Women* (CapU); *Love! Valour! Compassion!* (Ghostlight); *The Threepenny Opera* (Theatre In the Raw). **Training:** Capilano University, Birmingham Conservatory. **Online:** @DamonBJang; fabulisttheatre.ca.



## ANDREW KUSHNIR (he/him)

**LANGHAM DIRECTORS' WORKSHOP, 2018/19**  
**2023:** Director of *Casey and Diana*. Third season. **Stratford:** Assistant director on *Napoli Milionaria!*, *The Merry Wives of Windsor*. **Elsewhere:** As director: *The Division* (Tarragon Theatre/TMU), *Towards Youth* (Project: Humanity/Crow's Theatre with Chris Abraham); *Shirley Valentine*, *The New Canadian Curling Club* (Thousand Islands Playhouse), *Freedom Singer* (Project: Humanity, national tour). As playwright: *The Division*; *Towards Youth*; *Small Axe*; *The Gay Heritage Project* (with Paul Dunn/Damien Atkins); *Wormwood*; *The Middle Place*. **Training:** University of Alberta, Loran Scholar. **Awards:** Toronto Theatre Critics Award Outstanding Production (*The Middle Place*), Shevchenko Foundation REACH Residency. **Online:** kushnirandrew.com, IG @andrewkushnir. **Et cetera:** Artistic director of Project: Humanity and creator of *This Is Something Else*, an investigative theatre history podcast for the Arts Club. Andrew co-founded the Stratford Festival's Queer-Straight Alliance (2018) and established the We Support LGBTQ Ukraine Fund with the Veritas Foundation: lgbtukrainesupport.com.



## BARBARA MORRONE-SANCHEZ (she/her)

**2023:** Assistant costume designer for *Casey & Diana*, *Women of the Fur Trade* and *Love's Labour's Lost*. Second season. **Stratford:** Wardrobe apprentice (2022). **Training:** B.F.A in Theatre Production & Design, York University. **Et cetera:** Barbara hopes you enjoy the show!



## JOSHUA QUINLAN (he/him)

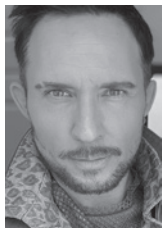
**2023:** Designer of *Casey and Diana*. Seventh season. **Stratford:** *Every Little Nookie*, and assistant designer for six seasons. **Elsewhere:** Set design: *Uncle Vanya* (Crow's); *Sleeping Beauty: A Panto Awakening* (CTPH); *Beauty and the Beast*, *Love and Information* (UWindsor); *My Hero*, *Giving Up the Ghost*, *Book Club*, *The Drawer Boy* (PSFT); *An Enemy of the People*, *Don Giovanni* (OSU). Costume design: *Yerma* (Coal Mine); *The Music Man* (TIP); *Stupid F\*cking Bird*, *Spring Awakening* (OSU). Set and costume design: *All My Pretty Chickens*, *The Last Five Years* (Langham Directors' Workshop). **Training:** MFA Theatre – Design, The Ohio State University; BA Honours Drama, University of Windsor; Off the Wall Theatre Production Arts Program. **Awards:** 2021 Siminovich Protégé Designer, 2019 Tom Patterson Award, 2017 Ian and Moly Lindsay Design Fellow. **Online:** joshuaquinlan.com.



## BETH RUSSELL

**2023:** Casting director for the Stratford Festival. 16th season. **Broadway and West End:** As Senior Vice President, Casting and Creative Development for Livent, Beth was responsible for productions including *Parade*, *Ragtime*, *Candide*, *Show Boat* and *Kiss of the Spider Woman*; as well as productions of *Joseph and the Amazing Technicolor Dreamcoat*, *Show Boat*, *Sunset Boulevard*, *Aspects of Love* and *The Phantom of the Opera* in Canada, the United States, Australia, Singapore and Hong Kong. **Elsewhere:** Co-Producer of CBC-TV's Triple Sensation, National Casting Director for CBC Radio Drama and Artistic Associate for Toronto Arts Productions (now Canadian Stage). Also, as an agent, Beth has represented actors, directors, choreographers, writers and composers.

# ARTISTIC COMPANY



## GEOFF SCOVELL

**2023:** Supervising fight director for the 2023 season. 12th season. **Stratford:** Supervising Fight Director 2022, Associate: 2013-2020 seasons, Assistant: 2004, 2009 seasons. **Elsewhere:** Fight director - *Bengal Tiger...* (Crow's Theatre); *Black Drum* (Soulpepper); *Peter and the Starcatcher*, *Sweet Charity*, *Cyrano* (Shaw); *Don Giovanni*, *War and Peace* (COC). **Film/TV Stunts (selected):** *The Boys* (four seasons), *See*, *FUBAR*, *Jack Reacher*, *What We Do In The Shadows*, *The Lost Symbol*, *Hardy Boys*, *The Man from Toronto*, *It Chapter Two*, *X-Men: Dark Phoenix*, *Schitt's Creek*, *Murdoch Mysteries*, *Ginny & Georgia*, *Jupiter's Legacy*, *Supergirl*, *Impulse*, *I Was Lorena Bobbitt*, *Save Me*, *Frankie Drake*, *Titans*, *Umbrella Academy*, *The Expanse*, *Designated Survivor*, *Suicide Squad*, *Dark Matter*, *Killjoys*, *12 Monkeys*, *Bitten*, *The Strain*, *Pompeii*, *Orphan Black*, *Total Recall*. **Training:** Supreme Fight Master Elite Level 3. BFA, Ryerson University. **Awards:** SAG nomination, Best Stunt Ensemble, 2021, 2023 Paddy Crean. **Online:** @GeoffScovell.



## DEBASHIS SINHA (he/him)

**2023:** Composer and sound designer of *Casey and Diana*, *Women of the Fur Trade* and sound designer of *Wedding Band*. Seventh season. **Stratford:** Composer for *Serving Elizabeth*; composer and sound designer of *The Crucible*, *Treasure Island*, *The Changeling*, *Breath of Kings*; sound designer of *Death and the King's Horseman*, *Mother's Daughter*, *The Aeneid*. **Elsewhere:** Music and sound for Peggy Baker Dance Projects, Soulpepper, Volcano Theatre, Theatre Centre, and others; appearances at MUTEK Japan, MOCA Toronto, Banff Centre, Haus der Kulturen der Welt, Guelph Jazz Festival, Sound Symposium, Art Gallery of Ontario and other venues. **Radio/Recordings:** Radio works on Deutschlandradio Kultur, ORF Kunstradio, Radio National España, Banff New Media Institute, NAISA; numerous solo recordings, audio artworks, and audiovisual projects. **Awards:** Dora Awards for Outstanding Achievement in Design (Opera) and for Original Music and Sound *Crash* (Theatre Passe Muraille); *We Are Proud to Present...* (Theatre Centre/Why Not); 2023 Louis Applebaum Composers Award Laureate.



## ARI WEINBERG

**2023:** Associate casting director. Second season. **Stratford:** Tootles in *Peter Pan*. **Directing:** *The Flying Lovers of Vitebsk*, *Dear Jack*, *Dear Louise*, *After Jerusalem*, *Tribes*, *The Whipping Man*, *Stars of David* (WJT); *The Theory of Relativity*, *The Secret Garden* (MTYP Musical Theatre Company); *Frankenstein* (University of Winnipeg); *Macbeth*, *A Midsummer Night's Dream* (Knavish Hedgehogs at Winnipeg Fringe). **Acting:** Mendel in *Falsettos* (WJT/ Dry Cold Productions); Snail in *A Year With Frog and Toad* and Snoop in *A Charlie Brown Double Bill* (Manitoba Theatre for Young People); Benvolio in *Romeo and Juliet* (Royal Manitoba Theatre Centre); George in *Hana's Suitcase* (Magnus Theatre). **Et cetera:** Ari served as Winnipeg Jewish Theatre's Artistic and Managing Director from 2015–2017. "Thanks to Beth and Jen and love to my family!"



## CASSIE WESTBROOK (she/her)

**2023:** Apprentice stage manager of *Casey and Diana*. Stratford debut. **Elsewhere:** *Ballad of the Motherland*, *Misery* (Neptune Theatre); *The Hobbit* (Festival Antigonish); *A Midsummer Night's Wet Dream* (Tea Time Creation Co.); *The Crucible*, *Dog in the Manger*, *Mary Stuart* (FSPA); *The Triangle Factory Fire Project* (CCPA). **Training:** Dalhousie University's Fountain School of Performing Arts (FSPA) and the Canadian College of Performing Arts (CCPA). **Online:** cassiewestbrook.com, @casswestb. **Et cetera:** Love to my family and friends for their endless love and support! x



## BOB WHITE (he/him)

**2023:** Dramaturge of *Casey and Diana*. 15th season. **Stratford:** Former Director of the Foerster Bernstein New Play Development Program (2012-2022). Dramaturgy credits include *Every Little Nookie*, *Hamlet-911*, *Little Women*, *Kate Hennig's Queenmaker Trilogy*, *Paradise Lost*, *The Breathing Hole*, *Bunny* and many others. **Elsewhere:** Artistic Director, Alberta Theatre Projects, Calgary (1999-2009); Co-Director, Banff Playwrights Lab (1997-2009); Artistic Director, Factory Theatre, Toronto (1979-1987). Director of over 75 productions from Cow Head, Newfoundland, to Victoria, British Columbia and places in between, but mostly in Calgary and Toronto. **Training:** Loyola College, Montreal, and University of Alberta. **Awards:** Honorary Doctor of Laws (LLD), University of Calgary. In 2018, Bob was awarded the GE Lessing Award for Career Achievement by the Literary Managers and Dramaturgs of the Americas. He is a member of the Order of Canada.

# STRATFORD SHAKESPEAREAN FESTIVAL OF CANADA – 2023

Address: c/o Corporate Secretary, Stratford Festival, P.O. Box 520, Stratford, ON N5A 6V2

Founder: Tom Patterson

## BOARD OF DIRECTORS

### OFFICERS:

**Chair:** Robert H. Gorlin, Northville, MI  
**Vice Chair:** David Adams, Montreal, QC  
**Treasurer:** J. Ian Giffen, Toronto, ON  
**Secretary:** Joy Wishart, Stratford, ON

### DIRECTORS:

David Adams, Montreal, QC  
Karon C. Bales, Stratford, ON  
Yaprak Baltacioğlu, Ottawa, ON  
John K. Bell, Cambridge, ON  
John Cassaday, Toronto, ON  
Barbara E. Crook, Ottawa, ON  
Mary C. Deacon, Toronto, ON  
J. Ian Giffen, Toronto, ON  
Luke Gilgan, Toronto, ON  
Robert H. Gorlin, Northville, MI  
Alexander E. Graham, Toronto, ON & London, UK  
Pamela Jeffery, Stratford, ON  
Jaime Leverton, Toronto, ON  
John D. Lewis, Grosse Pointe Farms, MI  
Harvey McCue, Ottawa, ON  
Suneeta Monga, Toronto, ON

Toks (Tokunboh) Olaoluwa, Oakville, ON  
Peter G. Restler, Brooklyn, NY  
Linda Rexer, Ann Arbor, MI  
Brian J. Rolfes, Toronto, ON  
Anne Sado, Toronto, ON  
Kay Schonberger, Toronto, ON  
Alan Shepard, London, ON  
David Simmonds, Toronto, ON  
David Staines, Ottawa, ON  
Kristene Steed, Stratford, ON  
Lawrence N. Stevenson, Toronto, ON  
Peter Walters, Milford, MI  
Carrie Wreford, Stratford, ON

### EX OFFICIO:

**Past Chair**  
Carol Stephenson, London, ON  
**Chair, Stratford Shakespeare Festival of America (and a director)**  
Linda Rexer, Ann Arbor, MI  
**Mayor of Stratford**  
His Worship Martin Ritsma

# STRATFORD SHAKESPEAREAN FESTIVAL ENDOWMENT FOUNDATION – 2023 BOARD OF DIRECTORS

Address: c/o Corporate Secretary, Stratford Festival, P.O. Box 520, Stratford, ON N5A 6V2

### OFFICERS:

**Chair:** Daniel S. Bernstein, Hanover, NH USA

### DIRECTORS:

David Adams, Montreal, QC  
Robert Astley, Kitchener, ON  
Edward Devlin, Innisfil, ON

David R. Peterson, Toronto, ON  
Peter G. Restler, Brooklyn, NY USA  
Cathy Riggall, Toronto, ON  
Nargis Tarmohamed, Exeter, ON  
Ross Waller, Lexington, VA USA  
Jim Young, Toronto, ON

# STRATFORD SHAKESPEAREAN FESTIVAL OF AMERICA – 2022/2023

## BOARD OF TRUSTEES

### OFFICERS:

**Chair:** Linda K. Rexer, Ann Arbor, MI  
**Vice Chair:** John Gardner, Mishawaka, IN  
**Treasurer:** Kate Arias, Chicago, IL  
**Secretary:** Kevin Turner, Birmingham, MI

### TRUSTEES:

Vivienne Lee, Ann Arbor, MI  
John D. Lewis, Grosse Pointe Farms, MI

Cindy Person, Rochester Hills, MI  
Martha Schubert, Cleveland Heights, OH  
Martha Thornton Montzka, Saint Paul, MN

### EX OFFICIO:

**Chair, Stratford Festival of Canada:**  
Robert H. Gorlin, Northville, MI

# WITH SINCEREST GRATITUDE TO OUR DONORS

We truly appreciate the many individuals and foundations who have supported the Stratford Festival, the new Tom Patterson Theatre, the Relaunch Campaign and our Endowment Foundation. We are honoured to acknowledge the cumulative gifts and pledges of a very special group of committed donors whose contributions over the years have truly made a difference and will continue to have a significant impact on the future of the Stratford Festival.

*Gifts made through the Stratford Festival of America are marked with an asterisk (\*).*

## \$20 MILLION +

Ophelia & Mike Lazaridis

## \$10 MILLION TO \$19,999,999

Daniel Bernstein & Claire Foerster\*  
Kelly & Michael Meighen and the T.R. Meighen Family Foundation  
Richard Rooney & Laura Dinner

## \$5 MILLION TO \$9,999,999

The Birmingham Family  
The late Robert G.E. Murray & the late Marion Murray  
Sandra & Jim Pitblado

## \$2.5 MILLION TO \$4,999,999

The Marilyn & Charles Baillie Fund  
Jane & Raphael Bernstein\* Estate of  
Mona Louise Campbell Estate of Estelle H. Cohen\*  
The Schulich Foundation  
Robert & Jacqueline Sperandio\*  
Mary Winton Green & the late David Green\*  
Anonymous

## \$1 MILLION TO \$2,499,999

Richard & Mona Alonzo\*  
Sylvia D. Chrominska

Dalio Philanthropies\*  
Robert & Mary Ann Gorlin\*  
Rita & Rudy Koehler  
Janet & Richard Lint  
Tim & Alexandra MacDonald  
The Richard James Mackler Endowment Fund for the Stratford Festival  
Estate of Nina Martin  
The J.W. McConnell Family Foundation  
Dr. M.L. Myers & the late W.P. Hayman  
The Northpine Foundation  
The Honourable David & Shelley Peterson  
Tim & Frances Price  
Martie & Bob Sachs\*  
The Slight Family Foundation  
Andy & Helen Spriet

Nancy & the late George Taylor  
Matilda R. Wilson Fund\*  
Anonymous

## PLEDGES AND GIFTS IN SUPPORT OF PRODUCTIONS AND ANNUAL PROJECTS FOR THE 2023 SEASON

We are sincerely grateful for the generosity and commitment of our Production Sponsors and other Major Gift Donors. These leadership gifts provide a bridge to the future of the Stratford Festival.

*The following list reflects gifts and pledges in support of the 2023 Season made up to January 31, 2023.*

## \$1 MILLION +

Ophelia & Mike Lazaridis  
The Slight Family Foundation

## \$250,000 TO \$999,999

Dalio Philanthropies\*  
Estate of Nina Martin  
Estate of Terrence Lee Paris  
Estate of Ellen Pearson  
The Schulich Foundation

## \$100,000 TO \$249,999

Daniel Bernstein & Claire Foerster\*  
The Fred A. & Barbara M. Erb Family Foundation\*  
David & Amy Fulton Foundation\*  
M.E.H. Foundation  
Estate of Martha Henry  
Estate of Lawrence Hodgett Robert & Jacqueline Sperandio\*

## \$50,000 TO \$99,999

Barbara Crook & Dan Greenberg,  
the Danbe Foundation  
John & Therese Gardner\*  
Robert & Mary Ann Gorlin\*

The Harkins/Manning Families in memory of Jim & Susan Harkins  
The William & Nona Heaslip Foundation  
The Jentes Family\*  
The Henry White Kinnear Foundation  
Dr. Desta Leavine in memory of  
Pauline Leavine  
Estate of Mary McKelvey  
The Catherine & Maxwell Meighen Foundation  
Estate of Robin Pitcher  
Martie & Bob Sachs\*  
Estate of  
Lawrence J. Santon\*  
Three Generations of the Schubert Family\*  
Sylvia Soyka  
The Westaway Charitable Foundation  
Catherine & David Wilkes  
Estate of E. Joan Williams

## \$25,000 TO \$49,999

Karon C. Bales & Charles E. Beall  
In Honour of Dan Bernstein & Claire Foerster\*  
Jane & Raphael Bernstein\*  
Sylvia D. Chrominska  
Priscilla Costello  
Cathy & Paul Cotton  
Jody & Deborah Hamade  
Estate of Nancy Johnston

Jane Fryman Laird\*  
Elizabeth Lang & Family  
Leonardis Trust\*  
The Fabio Mascarin Foundation  
The Philip & Berthe Morton Foundation  
Dr. M. L. Myers  
The Northpine Foundation  
Estate of Clarence Pace  
The Ptasznik Family\*  
Alan Rowe & Bryan Blenkin  
Catherine Elliot Shaw in memory of John D. Shaw  
Dr. Robert J. & Roberta Sokol\*  
The Dorothy Strelsin Foundation\*  
Nancy & the late George Taylor  
Alice & Tim Thornton\*  
The Tremain Family  
Peter & Carol Walters\*  
Dr. John H. Whiteside  
Anonymous (2)

## \$10,000 TO \$24,999

Estate of Alice Booth  
Ann Fairhurst & Mark Cipra\*  
Estate of  
Douglas Allen Kahn\*  
Patrick & Barbara Keenan Foundation  
Estate of Doris McCarthy  
Estate of Robert Murray  
Canada Council for the Arts  
- Vida Peene Fund

Sandra Rotman in honour of  
Louis Applebaum through The Louis Applebaum Visiting Artists Program

## \$1,000 TO \$9,999

Estate of  
Elizabeth Ann Buechler  
Estate of Thomas A. Caster  
Estate of David M. Cullen  
Irene Fast Trust\*  
Monroe & Rob Fried\*  
Estate of  
Jane Elizabeth Gale  
Kate Gfeller & Casey Cook\*  
Estate of Muriel Kassimatis  
Beth Kronfeld\*  
David Kronfeld\*  
Mark Monette & Judy F. Lane\*  
Rheo Thompson Candies  
Sharon Ruble Trust\*  
Ben, Jennifer & Stanley Silverman\*  
Estate of  
Patricia Gail Winnett

## PLAYWRIGHTS' CIRCLE

*Reflects gifts made between January 1, 2022 and December 31, 2022.*

*Gifts made through the Stratford Festival of America are marked with an asterisk (\*).*

## ARTISTIC DIRECTOR'S CIRCLE MEMBERS

**\$100,000 +**  
The Schulich Foundation

## PLATINUM STAGE MEMBERS

**\$50,000 TO \$99,999**  
Carol Stephenson, C.M.  
Philip Terranova & Audrey Allen

## RUBY STAGE MEMBERS

**\$25,000 TO \$49,999**

Robert & Mary Pat Armstrong  
Sheila & Don Bayne  
Nani & Austin Beutel  
John Cassidy  
Antoni Cimolino & Brigit Wilson  
Mary Ann & Robert Gorlin\*  
Hartman & Brenda Krug  
Paul Maranger & Robert Brown  
Sandra & Jim Pitblado  
Susan & Peter Restler\*  
Cecil & Linda Rorabeck  
Martie & Bob Sachs\*  
Jacqueline Sperandio\*  
April & Kevin Turner\*  
Peter & Carol Walters\*  
Anonymous (1)

## SAPPHIRE STAGE MEMBERS

**\$22,000 TO \$24,999 CAD**  
**\$20,000 TO \$24,999 USD**

Jo Harris\*  
Delia M. Moog\*  
Dot Morgan\*  
Mary Stowell\*

## EMERALD STAGE MEMBERS

**\$14,000 TO \$21,999 CAD**  
**\$12,500 TO \$19,999 USD**

Richard & Mona Alonzo Fund\*  
C. E. Atkin-Phillips  
Charles L. Babcock IV & Nancy W. Hamilton\*  
Michael Barnstijn & Louise MacCallum  
Mr. & Mrs. Frederick Bishop\*  
William Chapman  
Barbara Crook & Dan Greenberg through the Danbe Foundation  
Nicole C. Eaton  
Jim Fleck  
Dr. Bob Gaines & Toni S. Burke\*  
John & Judith Grant  
Brenda & James Grusecki\*  
Beth L. Kronfeld\*  
Dr. Desta Leavine  
Arlene & John Lewis\*  
Margaret & Lawrence Marsland  
Michael & Kelly Meighen  
The late Frank & Nancy Moore\*  
Louise Morwick & Lynn Miller  
Noel Mowat  
Carmi & Chris Murphy\*  
Hilary Pearson & Michael Sabia  
Jackie & John Porter  
Denis Schuthe & Lynne Dubeau  
Rachel Smith-Spencer  
Nargis Tarmohamed & Shaukat Mangalji

## DIAMOND STAGE MEMBERS

**\$6,500 TO \$13,999 CAD**  
**\$5,500 TO \$12,499 USD**

David & Patricia Adams  
Bob & Judy Astley  
Charles & Marilyn Baillie  
Peter & Marilyn Balan  
Yaprak Baltacioglu  
Laurie Barrett & Martin Block  
Colin Baxter & Ruth Harris  
Elin & Barry Becker  
Kaye & Paul Beeston  
John & Dian Bell  
Lee & Paul Blizman\*  
Bob Boltz\*  
George & Martha Butterfield  
Sharon & Howard Campbell  
Ellen & Brian Carr  
George & Edna Clemans\*  
H. John Davidson & the late Cathay Weston  
Thomas A. Dieterich\*  
William Dillane & Rena Bedard  
Anne W. Dupré  
John & Debbie Erb\*  
M. Fainer  
Geoffrey & Keenie Fieger\*  
Elaine Fieldman\*  
Tina Filoromo\*  
Donald & Cathy Fogel\*  
Robert & Patricia Forsythe\*  
Grace A. Franklin & the late Randall B. Ripley\*  
Gloria Friedman\*  
Anita Gaffney & Kevin Misener  
John & Therese Gardner\*  
Heather V. Gibson  
Ian & Helen Giffen  
Dr. Thomas Gray & Linda MacDonald  
Ron Gustafson\*  
Dr. Dennis & Dorothea Hacker  
Jody & Deborah Hamade  
The late Jane G. Hill  
Judy Holm & Michael McNamara  
David & Mariella Holmes  
Deanna Horton  
Archie & Jean Hunter  
Kathleen & David Jerome\*  
In memory of Mr. & Mrs. William Johnson\*  
Ann & Tom Johnston  
Charitable Fund\*  
Kimberly Kelley\*  
Doug Kennedy  
The Henry White Kinnear Foundation  
Cindy L. & Timothy J. Konich\*  
Jane Fryman Laird\*  
The Lawrason Foundation  
Donald Lee  
Janet Birnkranz Levine & Ellsworth Levine\*  
Dr. Harlan L. Lewis & Doris F. Wittenburg\*  
Tom & Rosemary Logan  
Tim & Alexandra MacDonald  
Dr. Mario L. & Mrs. Barb Malizia  
Esther McNeil in memory of  
John D. McNeil  
Kathleen Minor  
Erica Peresman & David Jaffe\*  
The Hon. David & Shelley Peterson  
Cathy & John Phillips  
Pitblado Family Foundation

Julian & Anna Porter  
Tim & Frances Price  
Peggy & the late Vic Ptasznik\*  
Paul & Ruth Rab\*  
Dr. Reza Rastegar & Sheryl Armstrong  
Bonnie & Kenny Resinski\*  
Brian Rolfes & Brad Berg  
In loving memory of Pamela Rowcliffe  
Alan Rowe & Bryan Blenkin  
Sabine Schleeese  
Kay Schonberger  
Dr. H.G. Schwarz  
Sandor Shoichet\*  
Gloria & Steve Smith  
Andy & Helen Spriet  
David Staines & Noreen Taylor  
Lawrence & Pamela Stevenson  
Dom Tassielli & Elena Pastura  
Chip & Barbara Vallis  
Ed & Sylvia Vanhaverbeke  
Peter Varty & the late Pat Martin  
Diane Walker & Rob Bell  
Peter & Kathy Wege\*  
Lyman & Deana Welch\*  
Drummond White & Norah Love  
Max & Mary Wisgerhof\*  
James D. Witmer\*  
Anonymous (4)

## GOLD STAGE MEMBERS

**\$3,250 TO \$6,499 CAD**  
**\$2,750 TO \$5,499 USD**

Andy & Karen Abrams\*  
Rodger & Diana Alexander\*  
Don & Nancy Allen  
Katie & Dave Andrea\*  
D.L. Anthony, PhD\*  
Albert & Julie Ashley  
Gail Asper O.C., O.M., LL.D. & Michael Paterson  
David Bach & Judy Hoenich  
Lee & Floy Barthel\*  
Larry Beare  
Patti & David Beckett  
Breen Bentley  
Michael Bernstein & Nandini DasGupta  
The Birks Family Foundation  
Mrs. Sean & Kirsten Blaine  
Christine Bloch & Guy Chadsey  
Terry Boyle & Jim Lawlor  
Mrs. Lynn Brooks  
Stephen Brown  
E. Burke  
Larry & Joyce Busch\*  
In memory of  
Libby Campbell  
Terry Carroll  
Brad & Stephanie Carson  
Joan Caruso\*  
Louis Charpentier & Robert Wakefield  
Earl & Claude Cherniak  
Austin & Gillian Chinn\*  
Jean & Joe Chorostecki  
Roberta Christianson  
John E. Cleghorn  
Marilyn E. Cook  
Rhon & Jennifer Cooke  
Cathy & Paul Cotton  
Robert & Phyllis Couzin  
Lenore & Grant Davidson\*  
Dr. Charles Deber & Dr. Raisa Deber\*  
Patricia G. Debrusk  
Shawn & Judy Denstedt

Marie desJardins & John Park\*  
Dan & Penny Dodge  
Catherine Dowell  
J. Driskill & L. Bryant  
Arnold & Cheri Drung  
Janet Ecker & Derek Nelson  
Nancy & William Edmunds\*  
David John Farmer  
Ron Farmer & Kathryn Stanley  
Robert Feeney  
Mark Feldman & Alexandra Hoy  
Dan Ferrier & Ron Northrup\*  
Russell C. Finch & Carol N. Finch  
Brian Flannery\*  
Dr. Jan Fleming & Dr. Mitch Winnik  
Zela & Raymond Foley  
Mrs. William Clay Ford\*  
Robert & Dr. Diane Fox\*  
Rhoda Jean Fraser  
Dick Furnstahl & Terri Stankiewicz\*  
Patricia Fyfe  
Gregory George in memory of John Mountain  
Kay Gfeller & Casey Cook\*  
Miles Gilburne & Nina Zolt\*  
Justice Eileen Gillese & the late Robert Badun  
M.A. Glover  
Sonny Goldstein & Dr. Betty Rozendaal  
Rob & Oriana Gordon  
Dr. Peter & Sheila Gorman  
Eleanor Gow  
Alex Graham & Karen Madorsky  
Charles & Barbara Graham  
Neil Graham & Jeanie Nishimura  
Stanley I. Griffin  
Dan Hagler & family  
Phyllis A. Hahn\*  
Sue & Cliff Haka\*  
Vern & Lois Hall  
Sheila Hannon & Garry Ruttan  
Dr. William & Dr. Gretchen Harris  
Doris Hauser\*  
Neil & Annmarie Hawkins\*  
Glenna Hemphill  
Heidi Henschel  
James & Susan Herman\*  
Mary Ellen Herman  
Nigel & Bridget Hodges  
Mary E. Hofstetter & R. David Riggs  
Paul Holeywinski & Mrs. Susan Cole\*  
Warren Holmes & Lucille Roch  
Hurckes Family Foundation\*  
Trisha Jackson & Ramsay Derry  
Pamela Jeffery & Norman Inkster  
Norman Jewison  
Brenda & Len Jewitt  
Dr. & Mrs. Donald & Christina Jolly  
George H. Jones & Vivienne Lee\*  
Jeffrey & Jessica Kahn\*  
Ellen & Nick Kammer  
Mark Kamstra & Lisa Kramer  
Martin Katz\*  
Julia A. Keim\*  
Gary & Mary Margaret Koreen  
Angelo & Rosalinda Lamberty\*

Jane Larkworthy  
Reverend Robert &  
Mrs. Emily Leland  
Robert Lemon  
Susan & Steve Liechti\*  
Mary Lister  
Nancy Lockhart & The  
Murray Frum Foundation  
Jeff & Marg Low  
Cynthia Martz Lowe\*  
James &  
Connie MacDougall  
Janice &  
Swaminathan Madhu\*  
The Maguire Family  
Ken & Diane Marley  
Dr. Marilyn Marshall  
David & Susan Matter\*  
Mary McDougall Maude  
Helen McArthur  
Ross & Fran McElroy  
George & Anne McFadyen  
Jean & Paul McGrath  
Graeme &  
Charlotte McIntosh  
Bob McKay, Nancy Pope,  
Judy Faucett &  
Barb Coffman  
Andrew & Sharon McKenzie  
Gloria & James McSherry  
Don Melady &  
Rowley Mossop  
Drs. P. & N. Mercer  
Eugene & Lois Miller\*  
Marg Misener  
Dr. John Mogan  
Deirdre & Dennis Moore\*  
Colleen Moorehead  
Rev. Richard Newland  
Dr. Roy B. Norton  
J. & S. Ondercin  
Rick & Jane Orr  
Mrs. Tom Orr  
Jonathan F. Orser\*  
Oxford Sand & Gravel  
Limited  
Sunny & Nini Pal  
Dr. David Parratt &  
Dr. Janis MacNaughton  
Richard & Kayla Pechter\*  
Christie Peck & Buck Baker\*  
Dave & Liz Pelletier  
Patricia Peloso  
Drs. Garth &  
Barbara Phipps\*  
James & Anne Pianosi  
Laurette & Ronald Pond  
Cheryl & William Povalla\*  
Jill Presser & the late  
John Duffy  
Deborah Preston  
Steve & Carolyn Rae  
Marcia J. Rector  
Anthony L. Reffells\*  
Linda K. Rexer\*  
Tom & Susan Richey\*  
Kathy Riggall & Keith Potter  
Dr. Anne Robinson  
Larry Rosen &  
Susan Jackson  
Alison & Doug Ross  
Rainer & Sharyn Rothfuss  
Ruth & Joseph Rudner  
Dianne & Jim Sanderson  
Marion Sanderson &  
Victoria Sanderson  
Ann Savege  
Sandy & Alan Schwartz\*  
The Schaljo Family  
Helen & John Scott  
Marilyn & Wes Scott  
Christine & Richard Seip  
Kenneth G. Shelley\*  
Mr. & Mrs. Robert A. Short  
A. Britton Smith  
Montagu J. Smith  
Dr. Patrick Smith &  
Peter Coleridge  
Renée & Bradbrooke Smith  
Dr. Robert J. &  
Roberta Sokol\*  
Dr. Diane M. Souby\*  
Renate & Richard Soulen\*

Sylvia Soyka  
Karen &  
Frederick Spaulding\*  
Karen Sprogis\*  
Sandy Stark &  
Michael Rowlands  
Gordon & Elaine Steed  
Deirdre Stevenson  
Janet E. Stewart  
Kerry Stuckey  
Gerald & Margaret Sutton  
Drs. David & Susan Tamblin  
Dr. David Taylor  
William & Carol Taylor  
Herm & Laurie Thomas\*  
Dave & Kim Thompson  
Bettie & Mark Tullis  
Jane & Robert Van der Kraan  
James van Raalte &  
Natasha Pateman  
Rick & Virginia Walker  
Joan Waricha\*  
Cheryl Weeks-Rosten\*  
Mary L. Wermuth\*  
Dr. Valerie Wise\*  
Brenda Wivell  
Drs. Krystyna Wojakowski &  
Bruce Murray  
Jan Woodley  
Jeremy & Carrie Wreford  
Leslie & John Wright  
Sylvia Wright  
Wenda Yenson &  
Ken Hurdle  
Martha Altschuller Zaritsky\*  
Jane & the late Eb Zeidler  
Anonymous (10)

**SILVER STAGE MEMBERS**  
**\$1,500 TO \$3,249 CAD**  
**\$1,250 TO \$2,749 USD**  
Eleanor Abra  
Doug & Dr. Lavonne Adams\*  
Michael A.W. Adams  
George &  
Frances Alderson\*  
Anne & Doug Alexander  
Michael & Suzan Alexander\*  
Clive V. Allen  
Alan & the late  
Karen Anderson  
Robert C. Anderson\*  
Katie & Dave Andrea\*  
Thomas Angiewicz &  
Florientina Cruz\*  
Caroline Archer  
A.J. Ashley  
Dona & Cass Atkinson  
Margaret Atwood  
Laurel & Robert Austin  
Drs. Judy Axelrod &  
Tom Amatruda\*  
Ted & Carol Aziz  
Evelyn & Brian Babineau  
Ian & Janet Baggs  
John & Claudine Bailey  
J. & H. Bain  
Andrew & Cornelia Baines  
Jeannie Baird  
Richard J. Balfour  
Baifour Bowen Family  
Foundation  
Sarah & Jason Bandey  
Bev Shugg Barbeito &  
Peter Barbeito  
Helga Barenberg  
Grant & Judi Barker  
Mary & John Barker  
Calvin Barrett  
Arlene M. Barris\*  
John Battaglia &  
M. Ellen Tarpey\*  
Pam M. Baxter & the late  
Gordon T. Law\*  
David & Rebecca Bean  
Mark & Lisa Beaulieu  
Karen Beazley  
R. Joanne Beckett  
Robert & Katherine Beebe\*  
Clive & Susan Bennett  
Janis Berg\*  
Michael & Sherie Berger\*  
Joseph & Roza Berkowitz

Dr. Ira Bernstein  
Kathryn & Michael Berry\*  
Valerie Jean Best\*  
Stan & Jackie Bezaire  
Rick & Kaila Bingen\*  
Timothy John Blahout  
Lorna Blair  
Susan Cooper-Twiss  
Ruth & Barry Corbin  
& Friends, Romans &  
Countrymen  
Katherine Robb Corlett  
Constance & Ron Corrigan\*  
Dr. Lesley S. Corrin  
Beverley Corsini  
Dorothy Courtneage  
Dr. M. L. Coveney  
Joanne & Tom Cowan  
Derek & Gay Cowbourne  
Joyce Crago  
Lynne Cram  
Bob & Kathleen Cranmer  
Elizabeth T. Crawford\*  
David Crombie &  
Margaret Kelly  
Heidi Croot & Phil Carey  
Jacqueline Crosby &  
George Kerhoulas  
Dianne & Bill Cross  
Mr. & Mrs. Bill Crothers  
Carl Cucco & Blythe Lee\*  
John & Laurie Currie  
Carole Curtis  
In memory of Roy &  
Betty Dahmer  
Marylee Dalton &  
Lynn Drickamer\*  
Elizabeth & Rick Davey  
Dr. Barry H. Davidson  
Elizabeth & Ted Davidson  
Elaine Davies  
Barbara F. & Dale G. Davis\*  
David & Linda Dayler  
Cynthia Baine De Maagd\*  
Michael &  
Christine De Santis  
Mary Deacon  
Bary Deathe & Susan Brown  
Prof. Richard Dees &  
Dr. Jennifer Kwon\*  
Sandra Ragland Demson  
Paul Dengel &  
Paula Moresy\*  
Dennis DesRosiers  
Reva Devins &  
Steve Goudge  
Fraser & Jessica Deziel  
Julie Di Lorenzo-Graham  
George Dickey  
Linda & Steven Diener  
Subhash & Jayashree Dighe  
Craig H. & Corinne C. Dill\*  
Chuck & Margaret Dingman  
Michael Dingman &  
Susan Sumner-Dingman\*  
Michael Disney  
Neil & Gail Dolson  
George & Corinne Donald  
Mearle & Elizabeth Doucet  
Bradley Douglas &  
Tong Zhou  
Terry & Becky Douglas  
Sharon E. Dowdall  
Mark R. & Susan L. Draves\*  
Jean E. Dryden  
Carol Duncan &  
George Oleske\*  
Robert Dunigan &  
Robert McDonald  
Michael & Leslie Dyon  
Philip Edwards  
C. A. Eierman\*  
Stanley &  
Susan Eisenhammer\*  
Dr. Janice L. Elder  
Frederick R. Eldridge  
Marjory Winkelman Epstein\*  
James & Mona Ermatinger\*  
Barbara Evans  
Elizabeth Evans\*  
The Marguerite & Ted Evans  
Family Foundation  
Herbert Evert & Jeannette  
Montgomery Evert\*

Judith L. Connor  
Dr. Lee Ann Conover\*  
Holly & Bryan Conroy\*  
Charles & Carol Contrada\*  
C. Ann, William J. &  
Liana Cook  
Susan Cooper-Twiss  
Ruth & Barry Corbin  
& Friends, Romans &  
Countrymen  
Katherine Robb Corlett  
Constance & Ron Corrigan\*  
Dr. Lesley S. Corrin  
Beverley Corsini  
Dorothy Courtneage  
Dr. M. L. Coveney  
Joanne & Tom Cowan  
Derek & Gay Cowbourne  
Joyce Crago  
Lynne Cram  
Bob & Kathleen Cranmer  
Elizabeth T. Crawford\*  
David Crombie &  
Margaret Kelly  
Heidi Croot & Phil Carey  
Jacqueline Crosby &  
George Kerhoulas  
Dianne & Bill Cross  
Mr. & Mrs. Bill Crothers  
Carl Cucco & Blythe Lee\*  
John & Laurie Currie  
Carole Curtis  
In memory of Roy &  
Betty Dahmer  
Marylee Dalton &  
Lynn Drickamer\*  
Elizabeth & Rick Davey  
Dr. Barry H. Davidson  
Elizabeth & Ted Davidson  
Elaine Davies  
Barbara F. & Dale G. Davis\*  
David & Linda Dayler  
Cynthia Baine De Maagd\*  
Michael &  
Christine De Santis  
Mary Deacon  
Bary Deathe & Susan Brown  
Prof. Richard Dees &  
Dr. Jennifer Kwon\*  
Sandra Ragland Demson  
Paul Dengel &  
Paula Moresy\*  
Dennis DesRosiers  
Reva Devins &  
Steve Goudge  
Fraser & Jessica Deziel  
Julie Di Lorenzo-Graham  
George Dickey  
Linda & Steven Diener  
Subhash & Jayashree Dighe  
Craig H. & Corinne C. Dill\*  
Chuck & Margaret Dingman  
Michael Dingman &  
Susan Sumner-Dingman\*  
Michael Disney  
Neil & Gail Dolson  
George & Corinne Donald  
Mearle & Elizabeth Doucet  
Bradley Douglas &  
Tong Zhou  
Terry & Becky Douglas  
Sharon E. Dowdall  
Mark R. & Susan L. Draves\*  
Jean E. Dryden  
Carol Duncan &  
George Oleske\*  
Robert Dunigan &  
Robert McDonald  
Michael & Leslie Dyon  
Philip Edwards  
C. A. Eierman\*  
Stanley &  
Susan Eisenhammer\*  
Dr. Janice L. Elder  
Frederick R. Eldridge  
Marjory Winkelman Epstein\*  
James & Mona Ermatinger\*  
Barbara Evans  
Elizabeth Evans\*  
The Marguerite & Ted Evans  
Family Foundation  
Herbert Evert & Jeannette  
Montgomery Evert\*

Maggie Ewert  
Carol Fahey  
Ann Fairhurst & Mark Cipra\*  
Dr. Allan &  
Dr. Renee Falconer  
Franklin &  
Stephanie Famme  
Howard & Donna Famme  
Nita Farmer & Ken Stowe  
Drs. Donald Farquhar &  
Kathryn Myers  
N. J. Farrell  
Lou & Merle Fazzini\*  
Dr. Claudia Fegan\*  
Abel Feinstein &  
Julie Towell\*  
Joni Feldman\*  
Sharon Feldman &  
Louis Porter\*  
Arthur & Shirley Ferguson\*  
Denise Fergusson  
George & Roberta Ferkins\*  
Sara & Karl Fiegenschuh\*  
William & Erin Flachsbar\*  
Peter & Jean Fleche\*  
Bill & Ann Fleming  
Karen Fleming &  
Kathryn Fleming  
Mary Pat & Louis Flores  
Dr. Michael Flores &  
Dr. Alan Grigg\*  
Sandra L. Flow\*  
Larry & Gayle Follitt  
Dr. Patricia Forbes  
Shauna & Sean Forbes  
Karen L. Ford\*  
Bonnie Foster &  
Jim Bertram  
Craig Foster &  
JoAnna Gordon  
Derrick Foster  
Julia & Robert Foster  
Michael & Susan Fox  
Stephen Francom  
Ann & Alan Frank\*  
John & Susan Franklin  
Al & Lois Fraser  
In memory of Yvonne Fraser  
Mr. & Mrs. James R. Fugitte\*  
David & Carmen Fuller  
Trish Fulton & Paul Cocker  
James C. Funk\*  
Dr. & Mrs. Ian Furst  
Susan & Henry Gabriels  
Elizabeth Longfield Gagnon  
Rev. Thomas George Gajdos\*  
Jim & Jayne Gall\*  
Eric Gangbar &  
Lisa Markson  
Paul Gaspar & Celia Zanatta  
Robert Gattfield  
Marie Gear & Larry Cerson  
Glen Geiger  
Mr. & Mrs. Rolf George  
Suzanne Gerhold\*  
Hope & Libby Gibson  
John & Toni Gibson\*  
Penny Gill &  
Christopher Pibus  
Christine Gill-Cuffaro\*  
Brent & Heather Gingerich  
Lucie Gingras  
George G. Gleason, II\*  
Mike & Ruth Goergen\*  
Dr. David Goldbloom &  
Dr. Nancy Epstein  
Robert Dunigan &  
Fred & Charleen Gorbet  
Harvey & Clara Gordon\*  
John & Joseph Gordon  
Jana & Sarah Gosling\*  
Lynn & Robert Gould  
Lyon & Nina Gould  
Peter G. Gould &  
Robin M. Potter\*  
Bruce & Jane Graham  
Dorothy J. Graham  
Ron & Gilte Granofsky  
Judith Gravidal &  
Murray Gordon\*  
Larry & Martha Gray\*  
Sherrill L. Gray\*  
Stephen Gray

Joseph Green &  
Jeanette Mansour\*  
Kathryn L. Greenspan  
David & Dulie Greer\*  
Gilles Grenier &  
Juliet Howland  
Julius H. Grey &  
Lynne-Marie Casgrain  
Michael G. Grey  
A. Grice  
Alan & Julie Griesinger\*  
Katherine Grimsdale  
Theodor &  
Jacquelyn Groen  
Cathy Grogan  
Marilyn Gropp  
Julie Gustafson\*  
Dr. Don &  
Mary Jane Gutoski  
Suzanne McDonald Gysbers  
& Neil Gysbers  
Kathlyn Hagerman  
Paul & Anne-Marie Halliday  
Ginette Hamel &  
Cliff Trollope  
M. Elaine Hamilton  
Moyra & Don Hamilton  
James Hammontree &  
Alexander Parr\*  
Tom & Sarah Hamza  
Danielle & William Hanson\*  
Robert & Pam Hart\*  
Ronald & Franziska Hart\*  
Nancy Hartry & Frank Burke  
The Hay Foundation  
Ron Hay & Hilaire St-Pierre  
In memory of Mildred S.  
Hedrick\*  
J. Daniel Heilman\*  
Jane & Ralph Heintzman  
John & Ann Hemingway  
Lisla Henderson  
Glynis A. Henry  
Gregory & Margene Henry\*  
Vic & Marion Hepburn  
Gloria Heppner\*  
Mark Herihly & Ann Kappler\*  
Lawrence &  
Beatrice Herman  
Roberta Herod  
Ann & Glen Herring  
Robert D. Hicks &  
Suzanne L. Burke\*  
Rev. James M. Higgins  
Lauri & Jean Hivala  
Ron Hikel & Tricia O'Malley  
Barbarie F. Hill\*  
Donald & Jean Hillis  
Alan Hirsch  
Wendy & Joe Hirschegger  
Dr. Susan Hiscock  
Patti & Peter Hnativ  
Ted & Judy Hodgkiss\*  
Laurie Hoffman Goetz &  
Wendelin Goetz  
Geoffrey Hole  
Gordon L. Hollander\*  
Ron & Susan Holliday  
Michael Homer  
Penelope Hommel &  
James Bergman\*  
Dr. Kenneth & Janet Hook  
Grant & Lily Hopcroft  
Richard & Susan Horner  
Dr. Barbara Hort\*  
Dr. & Mrs. Andrew A. House  
The Hon. Peter H. Howden  
Sally Hoyles  
John & Karen Hueston  
Judith Hull  
Jill Humphries  
James Hunt & Cheryl Brown  
Darryl & Colleen Huras  
Noel C. Hutton  
Jeffrey Hyttenrauch  
John Inciura  
Wayne & Leslie Ingram  
Pir Irwin & Zsombor Zoltan\*  
Alex & Shirley Jackson  
Michael Jackson  
John L. Jacobson &  
Carol J. Hargreaves\*  
Julie & David Jacobson\*

Kent & Pat James  
Sandra Jamieson  
Jaquith Family Foundation\*  
Shirley Jeffrey  
Catherine Jevons &  
Lionel Gadoury  
Arlene Jillard  
Frances E. Johnson  
Glenn & Joan Johnson  
Steve & Irene Johnston\*  
Wendy & James Johnston\*  
Harry Joosten &  
Kathleen Murphy  
Richard Joyrich\*  
Cheryl Jurjens  
Jacob & Grace Jutzi  
Dan & Catherine Kaloutsky  
Eleanor Kane  
Sheri-Lynn Kane  
In memory of  
Thomas Kaska\*  
Thomas Kay &  
Bryan Kaufman  
Patrick & Barbara Keenan  
Foundation  
Heather Kellerhals-Stewart  
John F. Kelley\*  
Brent & Marilyn Kelman  
David & Tracey Kempell\*  
Nancy Keppelman &  
Michael Smerza\*  
Gloria Kinnear  
Kloutky Family\*  
Thomas I. & Linda Z. Klein  
Philanthropic Fund\*  
John & Marge Knebel  
Marisa Kneisz  
Lois Kneppflar &  
David Cramton  
Jennifer Knox &  
Blair Knouse  
Doug & Debbie Koegler  
Rita Koehler  
Larry Koerner  
Mary Kowalschuk &  
Ron Linseman  
Dr. Ralph Krebs &  
Dr. Christina  
Heidinger-Krebs  
Barry Kropf\*  
Alexandra & Joe LaCombe\*  
Christine Laing\*  
Paul & Anne Lake  
Dixi Lambert  
Sally E. Lane  
Jeremy & Heather Langohr  
Francesca LaPlante-  
Sosnowsky &  
William Sosnowsky\*  
Tom & Nancy Laurie  
Barbara Lay  
Susan Layard  
Anne Louise Layton &  
Jamie Isbister  
Marshall & Joelle Leaffer\*  
Jeanne Petz Leaver\*  
Scott Leavitt & Sheri Wolfe\*  
Linda Lee &  
Michael Pharoah  
Neal & Dominique Lee  
Alexander & Anna Leggett  
B.J. & Nancy Leidl  
Dr. Barbara Lent &  
Prof. Robert Solomon  
Bob Leon &  
Maureen MacDonald  
Dr. Renee S. Lerche\*  
Mona Leventon  
Jaime Leverton &  
Kyle Nichols  
In honour of Rita &  
Stanley H. Levy\*  
Dr. & Mrs. David Lewis  
Janet Lewis & John Mader\*  
John & Michele Lewis  
Carole Lindsay  
Charmaine & David Lindsay  
Cathy Lindsey  
Sandy Linver &  
Bud Kornman\*  
Anthony Lisanti  
Anthony & Betsy Little  
Clare & Ken Livak\*

The Rev. John Lockyer  
Dr. Jeffrey F. Loo &  
Diane M. Kautz\*  
Esther Loth\*  
Alan & Barbara Low  
Steve Lowden  
Patricia Lumsden  
Tom Luxon &  
Ivy Schweitzer\*  
Dr. & Mrs. William J. Lyons\*  
Joan MacDermid  
Doug MacDougall &  
Barbara Green  
Michele A. Machowicz &  
Thomas J. Becvar\*  
R. Susan MacIntyre  
Dr. Angus & Janice Maciver  
Dr. Alistair W. MacLean &  
Gail MacAllister  
K. MacLeod  
R. John MacLeod &  
Elizabeth Miller  
Gail MacNaughton  
James &  
Gladys MacPherson  
Betty & Bill Magee  
Dr. Richard & Patricia Mah  
Meg Mahoney &  
Mike Connelly\*  
Drs. Phoebe &  
Harris Mainster\*  
Nancy & Ted Maitland  
Todd & Susan Makler\*  
Cheryl Manny  
Wendy Mansbridge  
Catherine March &  
John Wdowczyk  
Leor Margulies &  
Seval Alkin  
Stephen Markan &  
Coral Markan Davidson  
Kerry Marshall &  
William Glead  
Chris & Cynthia Martin\*  
Laura A. Mason  
Theresa Masterman in  
memory of  
Jack Masterman  
Lorna Mater  
Dan & Carolyn Mathieson  
Marcia Matsui &  
Roger Cotton  
Graham, Trevor, Sue &  
Biff Matthews  
Alan & Debbie May  
Christian & Shelley Mayer  
Michael & Margaret McCoy\*  
Basil McDonald &  
Linda Ratcliffe  
Nora McDonald  
Margo McDonnell  
Eida McDowell  
Mary McEllister &  
Dick Williams  
Nancy & John McFadyen  
Elizabeth McGavin  
Helen E. McGill  
Joan DeWitt McKean\*  
Kandice McKee &  
Desi Brownstone  
Dr. Murlene E. McKinnon\*  
Dianne McKnight  
Bruce & Ellen McLaren  
Fred & Kate McLean  
H. & J. McLean  
Hugh McLean  
Jean Anne McLeod &  
David Stones  
Heather McMartin &  
David Lighthouse  
Jenn M. McMillan  
Nancy McPherson  
Elizabeth & Brian McQuarrie  
Julie Medland  
A. James Memmott &  
Cynthia Schmitt\*  
The Very Reverend  
James D. Merritt  
The Mersol Family\*  
Peter & Sandra Metelski  
Brian & Anne Miatello  
Dr. Lisa Mikitch  
Denny & Libby Miller

The Rev. John Lockyer  
Dr. Jeffrey F. Loo &  
Diane M. Kautz\*  
Esther Loth\*  
Alan & Barbara Low  
Steve Lowden  
Patricia Lumsden  
Tom Luxon &  
Ivy Schweitzer\*  
Dr. & Mrs. William J. Lyons\*  
Joan MacDermid  
Doug MacDougall &  
Barbara Green  
Michele A. Machowicz &  
Thomas J. Becvar\*  
R. Susan MacIntyre  
Dr. Angus & Janice Maciver  
Dr. Alistair W. MacLean &  
Gail MacAllister  
K. MacLeod  
R. John MacLeod &  
Elizabeth Miller  
Gail MacNaughton  
James &  
Gladys MacPherson  
Betty & Bill Magee  
Dr. Richard & Patricia Mah  
Meg Mahoney &  
Mike Connelly\*  
Drs. Phoebe &  
Harris Mainster\*  
Nancy & Ted Maitland  
Todd & Susan Makler\*  
Cheryl Manny  
Wendy Mansbridge  
Catherine March &  
John Wdowczyk  
Leor Margulies &  
Seval Alkin  
Stephen Markan &  
Coral Markan Davidson  
Kerry Marshall &  
William Glead  
Chris & Cynthia Martin\*  
Laura A. Mason  
Theresa Masterman in  
memory of  
Jack Masterman  
Lorna Mater  
Dan & Carolyn Mathieson  
Marcia Matsui &  
Roger Cotton  
Graham, Trevor, Sue &  
Biff Matthews  
Alan & Debbie May  
Christian & Shelley Mayer  
Michael & Margaret McCoy\*  
Basil McDonald &  
Linda Ratcliffe  
Nora McDonald  
Margo McDonnell  
Eida McDowell  
Mary McEllister &  
Dick Williams  
Nancy & John McFadyen  
Elizabeth McGavin  
Helen E. McGill  
Joan DeWitt McKean\*  
Kandice McKee &  
Desi Brownstone  
Dr. Murlene E. McKinnon\*  
Dianne McKnight  
Bruce & Ellen McLaren  
Fred & Kate McLean  
H. & J. McLean  
Hugh McLean  
Jean Anne McLeod &  
David Stones  
Heather McMartin &  
David Lighthouse  
Jenn M. McMillan  
Nancy McPherson  
Elizabeth & Brian McQuarrie  
Julie Medland  
A. James Memmott &  
Cynthia Schmitt\*  
The Very Reverend  
James D. Merritt  
The Mersol Family\*  
Peter & Sandra Metelski  
Brian & Anne Miatello  
Dr. Lisa Mikitch  
Denny & Libby Miller

Jason L. Miller  
 Mary Anne Miller & the late  
 Albert Carr  
 Noah Millman &  
 Carolyn Schiff\*  
 Jean Misener  
 Marilyn Mitchell &  
 Eric Collins\*  
 Bert & Kathy Moberg\*  
 Alan Moffett  
 Mary Mogford &  
 Tom Campbell  
 Doug Moles  
 Ruth Molzan  
 Suneeta & Amit Monga  
 Dr. Angela &  
 Mr. Neil Montgomery  
 F. G. Moore &  
 D. E. Arsenault  
 Mary Elizabeth & Ron Moore  
 Tom Moore  
 Andrea Morningstar &  
 John Lucier  
 Roberta Morris &  
 Phil Bucksbaum\*  
 Sally & John Morris  
 Rebecca E. Morse  
 Heather Morton  
 Margaret Motz  
 Paul & Catherine Motz  
 Michael Mouritsen &  
 Dr. Lucille Covelli  
 Gary & Marg Mousseau  
 Michael & Margaret Mueller  
 Julian Mulock  
 Corinne Murray  
 Jim & Linda Murray  
 Peter & Karin Mussen  
 Bob & Carol Myers  
 Drs. Roger & Chris Nash  
 Deborah Nathan  
 John V. Nelson &  
 Carol Oldenburg\*  
 Jim & Trish Nicholson\*  
 John & Dorothy Nigh  
 In memory of Nita, Graciella,  
 Egbert & Nicolo  
 Marilyn Nolte\*  
 Demarée & Brett Noneman\*  
 Ian Nordheimer  
 Verena Cuthbert Normandeau  
 Jeff & Peggy Norton  
 Margaret A. O'Brien\*  
 Dr. Richard D. O'Brien &  
 Dr. Susan K. Whitbourne\*  
 Ellen J. O'Flaherty\*  
 Kathy O'Hara  
 Emile Olliana & Alvin Iu  
 Elena, Toni &  
 Cecelia Oliveri\*  
 Lawrence Olszewski, PhD\*  
 Larry Onions  
 Corinne K. Opitck  
 Daniel R. Ortiz\*  
 Ruth Ostrower  
 Nancy K. Owens\*  
 In honour of Julianna Ozorio  
 William & Gloria Pagen\*  
 Thomas W. &  
 Susan F. Palmer\*  
 Karen Pancost\*  
 Neil & Sharon Parkinson  
 Matt, Jenny & Finn Parr  
 Jody & Curt Passafume\*  
 Daniel Pearce  
 Douglas & Sandra Peers  
 Mary Ann Peppard\*  
 Louise Perkins & Jeff Glans\*  
 Robert & Cynthia Person\*  
 B.A. Petepiece  
 Victor & Esther Peters  
 Mark & Brandi Phillips  
 Jan Piesciuk\*  
 Mr. & Mrs. George R. Pilcher\*  
 Marilyn L. Pilkington &  
 Wayne E. Shaw  
 Richard & Annette Pivnick  
 Diane Plotek  
 Anne D. & Robert W. Plyler\*  
 Polk Family Charitable  
 Fund\*  
 Scott Pollard &  
 Suzannah Patmios

Ann & Gary Posen  
 Maria Angelique Poulos\*  
 Chris J. Price\*  
 Richard H. & Mary B. Price\*  
 David Prosser &  
 Barbara Dunn-Prosser  
 Brian J. Provin  
 John & Julie Ptasznik\*  
 Ralph Pudritz &  
 Patricia Monger  
 Gary & Merle Quart  
 Maureen Quigley &  
 Patrick Reid  
 Alan & Sandra Quirt  
 Cecil & Robert Rabinovitch  
 Mira Ratkaj  
 Patricia Reavy &  
 Denis Beatty  
 In memory of  
 Bonnie Reberg  
 John & Judith Reed\*  
 Matthew Rees &  
 Dr. Hankie Nguyen  
 Virginia J. Reese in memory  
 of Joan Moeller\*  
 Connie Reeve  
 Donald Regan &  
 Elizabeth Axelson\*  
 Helene & Rodney Reid  
 Candy A. Renard\*  
 Pamela & John Rennie  
 Ann K. Reynolds  
 Carol & the late  
 Martin Ribar\*  
 Paul Rice & Karin Dahl\*  
 Kate & Jamie Richardson\*  
 Kirk & Penny Rintoul  
 Anne & Grant Roberts  
 Lloyd & Nancy Robertson  
 Phyllis Robinson &  
 Morley Brown  
 Gerry Rocchi &  
 Kathie Drummond  
 Wilson & Judith Rodger  
 Dr. David & Patricia Rose  
 Judith & David Rose  
 Lillian Roth  
 Christopher & Kate Rowley  
 In memory of  
 Normande Roy  
 Anthony Rubin  
 Kenneth G. Russell &  
 Susan J. Peterson  
 Norman & Jo-Anne Russell  
 Mr. & Mrs. Rob Russell  
 Leila & John Ryan  
 Lorraine & Richard Rzepka\*  
 Paul & Janice Sabourin  
 Anne Sado  
 Susan & Peter Salomonsson  
 Philippa Samworth  
 Derwyn Sangster  
 Andy & Patti Santoloco  
 Mark Scandling\*  
 Frank J. Schauerte\*  
 Bonnie L. Schepers  
 Judy & David Schiffman\*  
 Dawn Marie Schlegel &  
 Darryl Matthews  
 Drs. Brynagh &  
 Clive Schneider-Friedman  
 Jean Schneider &  
 Daniel Hoban\*  
 Andre Schuh &  
 Catherine Eustace  
 Cornelia Schuh &  
 Michiel Horn  
 The Schumacher Family\*  
 Dr. Peter &  
 Mrs. Jody Schuringa  
 Dr. Brian D. &  
 Brenda R. Scott  
 Heather & Peter Scott  
 Thomas & Maryellen Scott\*  
 Cindy Scratch  
 Thomas & Nancy Seitz\*  
 Greg Sendi & Kris Hiatt\*  
 June Shaw  
 Alan Shepard &  
 Stephen Powell  
 David & Hilary Short  
 Peter & Sharon Silver\*  
 David B. Simmonds

Cheryl & Paul Simpson  
 Leslie Sinclair  
 Dr. Shiva Singh &  
 Dr. Cathy George  
 Kerry Sinkowski & Jim, Joe  
 & Olivia Terdik  
 John & Jill Skinner  
 Patrick & Martina Skuce  
 Michael & Sharon Sloan\*  
 Robert D. Sloan  
 Marcia Katz Slotnick\*  
 Bryan Smale &  
 Sherry Dupuis  
 Mr. & Mrs. David R. Smith\*  
 In memory of  
 Doreen M.E. Smith  
 Keith & Nancy Smith  
 Lucia & James Smith\*  
 Nancy & Leonard Smith\*  
 Robin A. Smith &  
 William F. Ballam\*  
 Stephen & Jane Smith  
 Paul Smithson\*  
 Lynn & Harry Solo\*  
 David Southen &  
 Susan Carlyle  
 Cecil Southward  
 Susan & Tim Spence  
 Joseph Spiegel &  
 Virginia Morgan\*  
 Christine St. Lawrence  
 Stage XVII Productions Inc.\*  
 Drs. John Stanley &  
 Helmut Reichenbacher  
 Susan & Ron Starkman  
 Ann Marie Stasiuk &  
 Rick Matthews  
 Nicole Stavish &  
 Kelli Landes\*  
 Kristene Steed &  
 Marc Johnstone  
 Margaret Steed  
 Apollonia Steele  
 John & Cindy Steep  
 The Margaret &  
 Andrew Stephens  
 Family Foundation  
 Jayne Stewart\*  
 Janice & the late  
 William Stover  
 Arlo & Judith Straight\*  
 Gay Strakshus &  
 Alexis Kneeland\*  
 Styles Family Foundation  
 Bev & Geoff Suderman  
 Gladwell  
 John Sulja  
 Danielle & the late  
 David Susser\*  
 Jean & the late  
 Robert Sutherland  
 Jan & Rick Sutin  
 Louise & Bill Sutton  
 Vesta Swenson\*  
 Andrea Swan\*  
 Joan & Graham Sweeney  
 Lawrence C. Sweet\*  
 H. Bruce & Nancy Sykes  
 Melinda Szilva & Jeffrey Fila  
 Eric Tang & Dr. James Miller  
 Thomas Tanton &  
 Sally Geib\*  
 Richard Tazik\*  
 Don & Janet Templeton  
 Tom Terpstra\*  
 Wuchien Michael Than  
 Ana & John Thompson  
 Deborah Thompson\*  
 Doug & Val Thompson  
 Gordon &  
 Mary-Anne Thompson\*  
 Chris & Susan Thomson  
 Iain, Marianne &  
 Sandra Thomson  
 Wayne Thorburn  
 Wendy & John Thorpe  
 Dr. M. Lynne Thurling  
 in memory of  
 Dr. John Treilhard  
 Jurgan & the late Ria Tietz  
 Edith M. Timken\*  
 Ron Tiplady  
 Douglas Trojanowski\*

Dr. Tsafnat & Dr. Schieldrop  
 Deborah Turnbull &  
 Tim Turnbull  
 Robert & Eloise Turner  
 Father Gary Tyman\*  
 Robert Tzopa  
 Esther Ullman &  
 Morley Witus\*  
 Ann Kathryn Usher  
 Gregory Uss  
 Douglas &  
 Beverly Valentine  
 John & Geneva Van Dorp  
 Mary Kirtz Van Nortwick &  
 Thomas Van Nortwick\*  
 Mr. & Mrs. John T.  
 VanBrandeghen\*  
 Sharon Vance &  
 Ted Johnson  
 Louise &  
 Mark Vandenbosch  
 Dr. & Mrs. Philip Vandewalle  
 Marcel & Edith van Hulle  
 Dr. Thomas Verry &  
 Sandra Collier  
 Cathy Vitkauskas  
 Dr. Louise Vitous  
 Dr. Kelly Vogt &  
 Dr. Brad Moffat  
 Dennis &  
 Joan Vollmershausen  
 Gini & Rev. Dr. Wendy von  
 Courter\*  
 Susan Vorner Kirby  
 Kimberley Vos  
 James & Michal Wadsworth\*  
 Rick & Henry M. Wagner\*  
 Dr. John R. &  
 Susanne Walker  
 The William & Joyce  
 Wallace Fund at The  
 United Church of Canada  
 Foundation  
 Leo J. & Karen Walsh  
 Betty Brush  
 Chris Watson  
 Martin Webster  
 Richard & Julia Webb\*  
 June & David Weind  
 Mrs. Mary Weingarden  
 June & Michael Welsh  
 Andy Werner &  
 Barb Hoyle-Werner  
 Janet West  
 Peter & Susan Westerman\*  
 Bev & Geoffrey Wheable  
 Ian White  
 Jeffrey M. White\*  
 Gerri Whiteley  
 Lynn & Bill Whittemore  
 Leslie Clare Whitfield\*  
 Brian Whittaker &  
 Marieken Molenaar  
 Mark A. Wilkinson  
 Brian D. Williams  
 James & Susan Williams\*  
 James & Nadine Williamson  
 Michael & Susan Wilson  
 Nila Wilson\*  
 Robert & Dana Wilson\*  
 Mark Wilton  
 Linda R. Winter\*  
 Anna Woerner  
 Justice & Mrs. Theo Wolder  
 Diane Wolfenden  
 Robert E. Woodley  
 Nancy Woods &  
 Huntly Christie  
 Jill Wright  
 Marcia Wright\*  
 Paul C. Wright &  
 Ute von der Heyden\*  
 Betty Jane Wylie  
 John Wylie  
 Mark Yakabuski  
 Gloria & Walter Yaworsky  
 Stephan Young &  
 Cindy Schoenborn-Young\*  
 Pamela Zabel &  
 Dr. Eric Thomas  
 Saul L. Zackson  
 Walter & Marie Zelasko  
 Carol Zettel & Scott Zinger  
 Carole Herman Zucker

Family Fund at The  
 Jewish Foundation of  
 Toronto

Marc Zwelling &  
 Judith M. Adam  
 Anonymous (51)

## GENERAL MEMBERSHIP

Reflects gifts made between January 1, 2022 and December 31, 2022.

Gifts made through the Stratford Festival of America are marked with an asterisk (\*).

### SUSTAINER MEMBERS

**\$1100 TO \$1499 CAD**  
**\$900 TO \$1249 USD**  
 Elpida A. Agathocleous  
 Diane Aman\*  
 Susan A. Andresen &  
 J. Paul Newell  
 Ann & Brian Arnold  
 David Arnold & Patti Robb\*  
 Ellen E. Atkinson  
 Elizabeth Baranacki  
 Les & Sue Barber\*  
 Doug & Holly Barkman  
 Earl & Elizabeth Barnsley  
 Drs. Eric &  
 Thomas Bartlett Walters  
 Samuel E. & Dr. Marion Bass\*  
 Daniel & Stephen Bateman  
 Cynthia & David Beekley\*  
 Charles & Mary Anna Beer  
 Norbert Beilstein & Alan Lee  
 Mary Jane Beingsner  
 H. D. Bell  
 Tom & Jo Belton  
 Milt Betteridge  
 Drs. James Biagi &  
 Barbara Fuller  
 Charles & Linda Borgsdorf\*  
 Lynda & David Bowen  
 Bruno & Pamela Bragoli  
 David & Ellen Bratton  
 Wendy Brown  
 Betty Brush  
 Chris Watson  
 Martin Webster  
 Dorothy L. Byrne-Jones  
 Margaret Campbell-Boyle &  
 Brian Boyle  
 Angela Carruthers &  
 Andrew Hammond  
 Dr. Janice Coates  
 Robert & Maureen Cook  
 Dr. Paul E. Cooper &  
 Alan & Geoffrey Wheeler  
 David J. Hiebert  
 David Copeland  
 Cheryl Cottle  
 Coral Courtney  
 Dr. Joanne Coutts  
 Bill & Rochelle Crawford  
 Kate Rowfield  
 Brian Whittaker &  
 Jim Cressman  
 John & Patricia Croft  
 Gordon & Janet Crompton  
 Bill & Lora Cummings  
 Heather & the late  
 Ronald Davies  
 William Dawson &  
 Anne Souter  
 Fred Dean & Karyn O'Neill  
 Patricia Dehaan\*  
 Pauline Deamester  
 Jim & Mary Fran Derby\*  
 Kathryn Derby &  
 Bob Sexsmith  
 Sandy DiMartino  
 Gary D'Mello  
 Eileen Dobell  
 Jane Dobinson  
 Dr. Ian Doris  
 R. Arthur &  
 Margaret Duboyce  
 Kate & Jerry Dudding\*  
 Tara Duhan\*  
 Michelle Anne Dunkley\*  
 Mr. & Mrs. Robert Duvin\*  
 Harry Edgar  
 Mr. & Mrs. Donald Edward  
 Mr. & Mrs Victor Eiser  
 Irene Elce  
 Catherine Elliot Shaw  
 Ken & Amy Elwert\*  
 Paul L. Epner &

Janet Gans Epner\*  
 Katie Evans\*  
 Suzanne Faber &  
 Rick Fildale\*  
 Charles Fairbank &  
 Pat McGee  
 Greg Farano & Linda Dvali  
 Patricia Farrow  
 David Feeny  
 Anna Lynn Ferguson  
 Joan Ferlan\*  
 Julia Fesmir\*  
 Marilyn & Tim Field  
 Mike Fischer & Elaine Griffin\*  
 Kate & Rowland Fleming  
 Edward & Nancy Fody\*  
 Anne & Fabrizio Fontana  
 J.E. & Michele Fordyce  
 Bill & Kathy Fothergill\*  
 James & Rachelle Frederick  
 In memoriam of  
 Marie Fulcher  
 Dr. Judit Gaal  
 Marek & Ann Gawel  
 Robert & Sandra Gay  
 Dr. Hugh Gayler &  
 Eileen Martin  
 Thomas M. Gervasi\*  
 Mr. & Mrs. B. Gibbings  
 John Gilroy  
 Donna & Trevor Gimbel  
 Stephen Gleason &  
 Ron Schwab  
 Shelley & Ken Glick  
 Dr. Michael P. Glinka\*  
 Darcy Gordon & Ann Cullen  
 Jim Govanis  
 Judith H. Graves\*  
 Dale & Kurt Grossen  
 Dr. Richard & Denise Haight\*  
 Jane Hair  
 Drs. Linda Hall &  
 Jeffrey Sams\*  
 Rhonda Hallberg  
 Alison & Michael Hannay  
 Sanford Hansell\*  
 Rev. Dr. Nancy E. Hardy  
 Michael Hart &  
 Michele Gower  
 Gunter & Margaret Hartwig  
 Alison Harvison Young &  
 Herman Wilton-Siegel  
 Judy & David Hecker\*  
 Karin Henderson  
 Sandy & Kevin Henning\*  
 Mr. & Mrs. David Hildner\*  
 Brent T. Hodge  
 Lesley Hopper  
 V. Hopton  
 Dr. Sharon Horlick  
 Robin & Charlotte Hoy  
 Ronald & Marilyn Humphrey  
 Graeme & Susan Hunter  
 Paul & Margaret Hurtubise  
 Bruce & Mary Hutchinson  
 Laura Hutter  
 Eileen Hyde  
 Susan & Paul Hyman\*  
 Dr. Jann Istead  
 Elliott Jacobson &  
 Judy Malki  
 Mr. & Mrs. David Jeanneret  
 Barry & Sheila Johnstone  
 Pamela Jones &  
 Rainer Paduch  
 N. Kamo  
 Craig & Carol Kapson\*  
 Patrick Keleher\*  
 T. M. Kelly  
 Dr. Mary A. Kennedy  
 Kyle Kerr & Stephen Bique\*

Marie E. Kessler\*  
 Sharon & David Kessler\*  
 Kathleen & Paul Kett  
 R. Kong & J. Wilkie  
 Dr. Edward & Dr. Laima Kott  
 Karen E. Krueger\*  
 Dr. William Kumbier\*  
 Carolyn Kusiar  
 Tom & Diane Kydd  
 Brenda Lachance &  
 Peter Lanskail  
 Deb Ladeheim\*  
 Dr. Rekha Lal &  
 Dr. Parvesh Anand  
 Betty A. Lang  
 Susan E. Leat  
 Eileen & Terry Leversedge  
 Anna Levin\*  
 Rachel & John Lewis\*  
 Dr. Thomas Linn  
 Bob & Kathy Listerman\*  
 Peter & Noreen Little  
 Velda Lloyd\*  
 Rebecca Luce-Kapler &  
 Kevin Kapler  
 Jason Mandlowitz &  
 Daryl Fridenberg  
 David March  
 Joanna Martin  
 Veronica Anne Martin  
 Ron & Mary Jane Mass\*  
 Patrick & Karen McDonough\*  
 John McGrade  
 Karen McLaughlin\*  
 John McPherson &  
 Lise Quimet  
 Margaret A. McQuiston\*  
 Linda Medland Davis &  
 Jeff Davis  
 Gord & Maggie Miall  
 Dr. Don & Lisa Miettinen  
 Cedric R. Miller  
 Carmel & Glen Mitchell  
 Fred & Tina Montreal\*  
 Mary Jane Moreau  
 Dr. Brian Murphy &  
 Toni Sanchez-Murphy\*  
 Joie Nash\*  
 Leisha Nazarewich  
 Dr. Brooke Noffle  
 Marilyn Ohler  
 Matthew & Amy Orchard  
 Sarah Parkinson  
 Peter Parvlin\*  
 Pat & Dave Paruch\*  
 David & Cathy Pawson  
 Michael Pearce &  
 Carolyn Sibbic  
 Carol & Wade Peacock\*  
 James R. Pearson  
 Elizabeth A. Pentland  
 Wally Pieczonka  
 Norm Plate &  
 Jim Letourneau\*  
 Mary Poss  
 J.A. Prestage &  
 Lisa Goodmurgy  
 Judy Probst  
 Lynn Ransom  
 Dyanne Ratner  
 Alison Reeve &  
 Charles Rose  
 Hannah Ridge\*  
 Judith Ritchie  
 Catherine M. Rod\*  
 In loving memory of John &  
 Norma Rogers  
 Felix & Caroline Rogers\*  
 David & Barbara Rohde\*  
 Martin Rohn & Karen Scales  
 Glenna Ross

Margaret Rutherford &  
 Dean Van Hooydonk  
 Sandra Salerno  
 David & Terese Salisbury\*  
 Michael Samborsky  
 Janet Schmitt\*  
 Mel Schwartz &  
 Laura Keith-Schwartz\*  
 Dennis Shaughnessy\*  
 Pamela Simmons  
 Holly & Henry Simpson  
 Ken & Marybeth Slonnegger\*  
 Tom & Ruth Small\*  
 Adrienne &  
 Arthur Smith Windsor  
 David Smukler  
 David & Trudy Spence  
 Karen Stankye\*  
 Frank & Liz Steel  
 John A. Stewart  
 Bradley L. &  
 Simone Himbeault Taylor\*  
 Nancy Theisen\*  
 Jonathan &  
 Diane Townsend  
 Terry Triskle &  
 Sabina de Stecher  
 Mr. Sean Trofin &  
 Mr. Ken Scaddan  
 Dorothy Turner\*  
 The Rev. &  
 Mrs. Richard L. Ullman\*  
 Perry Van Allen &  
 Jayson Gould  
 Henry Van Drunen & Lykke  
 Brandemark Van Drunen  
 Martha Vander Kolk\*  
 Grant Vingoe &  
 Nancy Matsumoto  
 Ruth Wahlstrom\*  
 Barbara Wasserman\*  
 Brian Waters  
 Bruce Westlake &  
 Linda TerHaar\*  
 Dianne & Gary Westlake  
 Tim & Arlinda Wickland\*  
 Heather Wiegand  
 Diane Wilbur & Jim Szalay\*  
 Andrea Willis\*  
 Larry Willis & Robyn Ellis\*  
 Vida Winegarden  
 Andrea & Ted Witzel  
 Rudi & Kathryn Wycliffe  
 Ann M. Zsebezhazy &  
 Daniel Zsebezhazy\*  
 Anonymous (26)

### ASSOCIATE MEMBERS

**\$675 TO \$1099 CAD**  
**\$600 TO \$899 USD**  
 Margaret Ackerman  
 Christine O. Adams\*  
 Patricia Adams  
 Steven & Laurie Adams\*  
 Bill Allen  
 Meredith Alston &  
 Alex Miller  
 Mrs. Mary Anderson  
 Pat & Leslie Andrews  
 Robert Andrews  
 Dr. Philip Anisman  
 Marguerite Annen  
 Lori Anschutz &  
 Celia Easton\*  
 Ross & Yvonne Archibald  
 Nancy Arends  
 Dennis & Kim Armbruster\*  
 Dr. Marion Arthur  
 Donna C. Atwell\*  
 Sandra & James Bade\*  
 Marvin Baer

Laurence R. & Barbara K. Baker\*  
Edward & Janice Bardzik\*  
Stephen & Shelley Barrett  
Michel Beauvais  
Dianne J. Beaven  
Andre & Joan Bedard  
Stan Behal & Lynn Whitham  
Allan Behan & Lita Classen  
Kevin Bell  
Doris Belland  
Paul & Rosemary Bender  
Elizabeth Bennett\*  
R. Peter Bennett  
Maia Bent & Michael McKinlay  
Peter & Robin Bernath\*  
Laura & Robert Bernston  
Wanda Bielawski  
Leeds & Margaret Bird\*  
Kathy & Gerry Bissett  
J. Russell Blake  
L. Denise Bogart  
Thomas J. Bolam & Sarah E. Watson\*  
Barbara Bolton  
C.A. Bolton  
In memory of Joan Bondy  
Clare Booker & Jay Mowat  
Carol Bossenberry & Ralph Wallis  
Lorne & Pam Bossin  
John Boxer  
Dr. Michele Boyd  
John & Lyn Bredell\*  
Doug & Val Brenneman  
The Brett Family  
William & Arlene Brewster\*  
Beverly Briden & Thom Workman  
Douglas & Diane Brohm  
Ken Brocklehurst  
Peter Brown  
Robert N. & Claire P. Brown\*  
Dr. Stephen E. & Mrs. Patricia Brown  
Alex Browning  
Hilary Bruun  
Jill T. Bryant\*  
Donald & Tracy Bryce  
Michelle Bryk\*  
Jean Bubba  
Brian Bucknall & Mary Jane Mossman  
Joanne Burns & Larry Shoffner\*  
Keith & Tamar Burnett  
Thomas & Pat Buscher  
Rita & Ted Button  
Maureen Callahan & Douglas Gray  
Margaret Cameron  
Anthony & Carol Caminite\*  
Ann Campbell  
Brian Carey  
Dr. Susan Levitt Chalom\*  
Dianna Chandler  
Eva Chapin  
Joanna Chapman  
Karen Cheadle\*  
Ronn Cheney  
Noam & Beryl Chernick  
Jeanne & Henry Ciok  
Alan & Marlies Clark  
Earl C. Clark  
Judy & Bruce Clarkson  
Michele & James Clemens  
Maurice & Christine Clement  
Brent Clark  
Ellen T. Cole  
Robert Colliver  
Jeff & Marjorie Conner\*  
John & Claudia Cook\*  
Barbara & Cody Cooper  
Nicholas Alban Corcoran\*  
Christa & the late Norm Correll  
John Coulton  
George & Wink Covintree\*  
Dr. & Mrs. William Coyne  
Daniel & Alice Crocco  
Ian & Beth Croft

Margaret Croft  
Steve Dalton & Lynn Leith  
Sherry Daniel  
Bryan & Malkin Dare  
John David  
Leonard & Patricia Davies  
Reid & Linda Davis  
Jim & Jan Dawson  
Dr. Mark & Katie Diotallevi  
Maribeth Ditchfield  
Fred & Nancy Dolehanty\*  
Peter & Mary Ellen Doody  
Robert & Astrid Douglas  
Kenneth & Rosemary Dowie  
James & Ellen Doyle\*  
Kathy & Guenter Draudt  
Jim & Sheila Drury  
Elizabeth Durand  
Mary & Frank Eberl\*  
Allan & Susan Edwards  
Lance & Johanne Edwards  
Wendy & Elliot Eisen  
Cheryl Elliott  
Richard & Rosina Ellis  
Veronika Elsie  
Roger & Janet Emery  
Shelly Errington\*  
Michael & Nanci Fair  
Rynaldo & Marilyn Fedorenko  
Wayne Fenske & Melanie Lambertsen  
Bill & Mildred Ferguson  
James Ferguson & Catherine Patterson  
Jodie Ferraby\*  
Richard & Judith Field  
Barbara Fingerote  
Elizabeth Finlay  
Ron J. Fischer & Dr. Joyce Banks  
Margaret J. Ford\*  
Shelley Fracalossi\*  
Ceairy Free & Matthew Bossence  
Edna M. Freier\*  
Ted Frey & Merle Fast  
Gian & Patricia Frontini  
Dale & Rosemary Fruman\*  
Helen M. Fry  
Kristine Galien\*  
Jan & Doug Gayman  
Marshall Bruce Gentry\*  
Douglas George  
Susan Gerhard  
Steve & Lauran Gilbreath\*  
Fred & Susan Gilliam\*  
Ellen S. Gilmore  
John & Sarah Gilmour\*  
Mary & O'Derald Gingerich  
Susan Ginsberg  
Trevor Gittins-White & Nana Deshima  
Bernie & Marcia Glick  
John & Susan Goddard  
Elaine Godwin  
John & Katharine Gonder  
John R. Good  
Mary Gordon  
Leslie F. Graham  
Betsy K. Greene\*  
Charles & Juliana Greening\*  
Colleen Gregory  
Charles Greiner  
Dr. Franklin & Mrs. Merle Griff\*  
Judith Grypton & Dr. Timothy Hogan  
Betty A. Gropp  
Toni & Frank Gross\*  
Mr. & Mrs. George A. Grove\*  
Adam Grymkowski in honour of James Oates\*  
Vance & Virginia Gudmundsen\*  
Barbara Guest  
Heather & Preston Gurd  
Lloyd & Randy Gussis\*  
Linda Haist  
Frederick & Clare Halliwill\*  
Fred & Connie Hall  
Jan Hall

Vincent & Elizabeth Hamacher  
Gavin & Beatrice Hamilton  
John & Ruth Hannigan  
Robert & Betty Harlow  
William Harper & Susan Pepper  
Beverly Harris & Tim Seegmiller  
Carol I. Harrison\*  
Roy & Debora Harrold  
Helen M. Hawkins  
William Heimann & Mary Toll\*  
Barb & Kevin Hendrick\*  
Leona Hendry  
Rev. William & Lorna Hendy  
Clare Henhawke  
Mary & Larry Hennessey\*  
Don & Sylvia Henry\*  
Doug & Debbie Herridge  
Wendi Hiebert  
John Higgins  
Thomas Hill  
Charles & Nadean Hillary\*  
Anne & Bruce Hilton  
Gerry & Greta Hofstra  
Stephen Holowitz & Theresa Corrigan  
Cecil Holtrop & Mary Jansen  
Jo-Anne & John Hood Tidman  
Lori & Brian Hoppe\*  
Maureen & Robert Horrell\*  
William Horrell & Kate Nessler\*  
Dr. Jane Hosdill  
Dr. Carol P. Huber  
James Hughes  
Karen Hultin  
Dr. David Humphreys & Mollie Petryna  
Lindsay & Susan Hunt  
Hugh Hunting  
Peter Hurley & Maria Pacheco  
Mr. & Mrs. A. Incretolli  
Mr. & Mrs. Alick C. Innes  
Dr. Roderick & Alberta Jack  
Barbara Jackel  
Margit A. Jackson\*  
Mark Jacobs\*  
Susan & David James  
Norma Jansson  
William Martin Jean & David Gooding\*  
George & Sharon Joachim\*  
Beth & Ethan Johnson\*  
Jean Johnson  
Kristina R. Johnson\*  
David & Stacey Jones  
George & Chris Joyce  
Pat & Sue Kaltenbach\*  
Philip & Caroline Kane  
Dagmar Kanzler & David Ross  
David E. Kaplan\*  
Diane & John Kaplan  
Betty Kellenberger & Eleanor Love\*  
Mr. & Mrs. Thomas Kendzior\*  
Francine Kenney & Mario Richard  
Dr. Prakash & Mrs. Ulka Khare  
Barbara Kidd\*  
Robert H. Kieft\*  
Paulette D. Kilmer\*  
Tilia Klebenov Jacobs & Doug Jacobs\*  
John & Rosemary Knechtel  
Ted & Christine Knight  
Gar & Michael Knutson  
Richard & Mary Kay Koerner\*  
Michael & Paula Koppisch\*  
Bob & Gail Kostash  
Marjorie & David Kostelnik\*  
John & Susan Koval  
Karen Kral\*  
Rosemary Krimbel & John Garten\*  
Deborah Kuehnbaum

Robert Kuhn & Darcy Devney\*  
Alex Kuskis & Judy Harvey  
Susan Kusturin & Joanne Dundass  
Linda Kutter  
Rosemary Lambie  
Margaret & Stephen Lamont  
William Landry  
Andrew Langford & Bronwyn Watters  
Bruce & Judy Langstaff  
Greg Lashutka & Catherine Adams\*  
Susan M. M. Laws  
Robert & Helen Lebowitz\*  
Ethel & the late Fred Lee\*  
Julie Y. Lee  
John & Judy Lenehan  
Robin & Jerrold Lerman  
Lorraine Lerner\*  
Richard & Sandra Levy  
David Lewis & Susan Carter  
Dr. Susan Lipa  
Dr. Jeffrey Lipton  
Larry & Sue Lipton\*  
Michael & Debra Lisull\*  
Anthony & Caroline Lloyd  
Dr. & Mrs. Konstantin R. Loewig\*  
Jerome & Tina Logassi  
Armando & Anna Lopez\*  
Charles & Beverly Lynde  
Alyce Lyne  
Flora Macdonald  
James Macanuel  
Art & Carol MacDonald  
Bruce MacGregor  
Dianne MacKeigan  
Joanne MacKenzie  
Thomas A. MacWilliam  
David & Kathy Maister\*  
Dr. Suzanne Majhanovich  
Kamla Makhan & Gary Clewley  
Allan & Gale Male  
Stephanie Marler  
Ronald & Nancy Marshall  
Mr. & Mrs. Danny Martin  
Laura Martin  
Randal Martin  
Roy Martin & Frank Ripplinger  
Sara Martin  
Mr. & Mrs. William P. Martin II\*  
William & Agnes Martin\*  
Lillian Martingano  
Deborah Matthews  
Jennifer Matthews  
Sharon McCarthy  
Susan McCawley & Dennis Hewit  
K. Lorraine McClelland  
D. Ann McClure  
Bruce & Lucy McDiarmid  
Hugh & Jane McDonald  
Mr. Jim McDonald  
Dr. Marilyn McDonald\*  
Mr. & Mrs. Allan R. McDowell  
George McEvenue  
Anne & John McGee  
Helen & Don McGillivray  
Pauline McKenzie  
Sarah McKnight  
Julie K. McLaughlin  
Dan & Stella McShan\*  
Robert & Mary McTavish  
Vince Megarog & Donna Fleming  
Larry & Ardyth Melnychuk  
Harold & Susan Merskey  
Richard & Karen Middaugh\*  
Alan C. Middleton  
Dr. A. Rees Midgley & Dr. Jane Wilson Coon\*  
Mark Miller\*  
Glen Miller  
Kenn Miller\*  
Lu Anne Margaret Million  
Kelly  
John & Jill Mills  
Harriet & Dale Mitchell

Malcolm Moffat & Louise Smith  
Kelly & Sally Monaghan  
Jami & Richard Moore\*  
Roslyn Moorhead  
James & Mary Morgan  
Ann & Steve Moriarty  
Reverend J.P. Ian Morrison  
Barbara & James Moscovich  
Judith Mosel  
Deb & Doug Mountain  
Carl & Linda Muehlig\*  
Dawn D. Mullinger\*  
Catherine Adams\*  
Susan M. M. Laws  
Terry & Katherine Murphy  
Fred & Juliet Nagle\*  
Dr. Janet Nairn & Dr. Stephen Gawron  
Sam Nelson\*  
Nairn Nerland  
Penny Noble  
Sybil Nowell  
Paula & Joe Nunes  
Christine & Michael O'Beirn  
Geoffrey & Jane O'Brian  
Lynn & Jack O'Donnell\*  
Janice Oliver  
Barb & Mark Orтели  
Mr. & Mrs. Brian & Beverly Osborn  
Charles & Judy Overland  
Glen Oxford  
Carolyn Ozimek  
Douglas G. Page KC  
Donna & Harvey Palmer\*  
Leslie Palmer  
Andre Paradis  
Robert & Ann Parsons  
Doug Paterson  
Mr. & Mrs. Robert J. Pawlowicz\*  
Michael Pearson  
Sandra Pearson  
Paul Penman  
Frank & Sue Penny  
Bruni Penzhorn  
Steven & Randi Peters\*  
Mary Pickett & Rich Teets\*  
Robert Pilon  
Lois & Lauren Pitalis\*  
Royal Pitchford\*  
Nicholas Plummer & Elizabeth Clare  
Kevin P. Polan  
Elaine S. Pomeranz\*  
Robert & Sarah Poole  
Antonio Porretta

David Porter & Margaret Poutasse\*  
Tina Powell  
Gerald & Jane Prance  
Fred Prasser\*  
Dr. Stephen Provencher & Carola Koitz  
Kevin & Marcia Pufpaff\*  
Ian Quirt & Jacinta Meharchand  
Barbara Radford\*  
Mysore Ramaswamy\*  
Mr. & Mrs. Yaddanapudi Revindranath\*  
Samantha & Scott Reaume  
Catherine & Gordon Reidt  
Dr. & Mrs. Steven & Leonie Reinhardt  
Karen & Paul Rempel  
Rozanne Retzel  
Dorothee Reslerath  
Susan & Mark Richardson\*  
Cameron & Sharon Ridsdale  
Michael Roantree & Louis MacPherson  
Dianne & Robert Robinson  
Edward & Arlene Robinson  
Dr. Gertrude J. Robinson  
Laura E. Robison\*  
Kevin & Teresa Rodger  
Eleanor Rogers  
Sharon Roppel  
Louis & Cindy Rose\*  
Erin, Quinn & Greyson Ross  
Wendy Rosser  
Marcia Ruff & Tom Wilkinson\*  
Isabel Ruttie  
Dr. Vinod & Mrs. Gail Sahney\*  
Sandra & Paul Sales  
Gary & Sue Saltarelli\*  
Maureen L. Sampson  
Daniel & Jennet Sandler  
Daniel Sarri  
Brad Saunders  
Paul & Wendy Scagnetti  
Murray & Kathleen Scanlon  
Nancy A. Schallert\*  
Miss Adelaide D. Schaaf\*  
William F. Schmidt Jr.\*  
Sharon Schnarr  
Marjorie Schryer & Joan Reynolds  
Rebecca F. Schuppbach\*  
Walter & Lois Scott\*  
Chuck Shannon\*  
In memory of Sheila K. Shaw  
Vijay & Mano Sharma

Susan & Rob Shapiro\*  
Dr. Kevin & Cheryl Shine  
Mary Ann & Peter Shumaker\*  
Edward Simmonds  
Ivor & Renee Simmons  
Robert Simpson  
Jacquie Sims  
Dr. Glenn W. Sinclair  
Keith & Dorothy Sjogren  
Robert Slattery & Toni Morales\*  
Elliot & Retta Slotnick\*  
Joanne Smith Cutler & Stan Fisher  
Don & Jean Smith  
John & Lois Smith  
John Snow & Rene Fitzgerald  
Alvin Spaxman  
Jacqueline & Erich Specht  
Michele Speir  
Dr. & Mrs. F.R. Sprague\*  
Michael J. Stachowsky\*  
Susan & Ray Stancer  
Dr. James Staples\*  
Douglas E. Stark\*  
Jan & Susan Starr\*  
Marion Steele  
Elaine & Joseph Steiner  
Ken Stephen  
Robert A. & Sylvia S. Stevens\*  
Shelley Stevenson  
David & Beverly Stone  
Linda & Larry Stone\*  
Hennie Stork  
Angela Stroud\*  
Ann & Ross Stuart  
Mr. & Mrs. E. Sudmals  
Bruce & Gayle Tait  
Katie Taniuous  
Judy & Lewis Tann\*  
Andrea Taylor & Andrew Miller  
Cheryl Taylor  
Robert Taylor  
Daniel Tetreault  
Nancy A. Schallert\*  
Miss Adelaide D. Schaaf\*  
William F. Schmidt Jr.\*  
Sharon Schnarr  
Marjorie Schryer & Joan Reynolds  
Rebecca F. Schuppbach\*  
Walter & Lois Scott\*  
Chuck Shannon\*  
In memory of Sheila K. Shaw  
Vijay & Mano Sharma

Mary Usher-Jones  
Stevan & Joyce Zelac\*  
Dr. R. B. Van Winkle  
Karen Vander Kant  
Ted & Ann Vaughan-Neil  
Sally Vernon  
Marie Voisin  
Gary J. von Holwede  
Linda Wagg  
Peter & Diane Waldock  
Nick & Marg Walker  
Lesley Walters  
Royal & Donna Ward\*  
Richard & Donna Warden\*  
Phillip & Lois Wattam  
Melanie Webb  
Grant Wedge & Bob Crouch  
William & Denise Weiler  
Lawrence Weis & Dr. Kathleen McCarrroll\*  
Christine & Richard Weisfelder\*  
Robert & Judith Weiss\*  
Ian & Kristina Wessenger  
Macdonald  
Peter & Barb Whitby  
Alden & Susan White  
Juliet White & Anthony Duke  
Jon & Catherine Whitehead  
Firth Whitwam & Julie Makepeace  
Robert Williams  
James & Sharon Wilson  
Margaret E. Wilson  
Alberta Auringer Wood & Family  
Mr. & Mrs. John Woolatt  
Marlene & Ron Worboy  
Fred Wroblewski\*  
Renee Yardley  
Dr. Stuart Yoak & Dr. Jana Perea\*  
Hilda Young & Bruce Hanna  
Jill & David Young\*  
Wayne Young  
Carol Young-Ritchie & Mark Ritchie  
Eleana Yun  
Wayne & Dianne Yundt  
Vicky Zalev  
Bernadette Mary Zemenick  
& Gregory Alan\*  
David & Suzanne Zimmerman\*  
Anonymous (67)



MICHELLE KARI AT WORK IN THE BOOTS-AND-SHOES STUDIO.



ACTOR SHANNON TAYLOR IN A FITTING FOR KING LEAR WITH MICHELLE BOHN (RIGHT) AND JOHANNA BILLINGS (LEFT).



## ENDOWMENT DONORS

25 years ago the Endowment Foundation was created to help ensure the Stratford Festival's financial stability "For All Time". We take this opportunity to express our gratitude to our generous donors for their commitment to the Festival—now and well into the future.

### ETERNITY LEVEL

**\$5 MILLION +**  
Bruce & Betty Birmingham  
Department of Canadian Heritage  
Hon. Michael A. Meighen & Kelly Meighen  
Dr. Robert G. E. Murray & Marion I.N. Murray Fund  
Province of Ontario - Arts Endowment Fund Program  
The Stratford Shakespearean Festival of Canada

### EPOCH LEVEL

**\$2 MILLION TO \$4,999,999**  
The Marilyn & Charles Baillie Fund  
Estate of Mrs. Estelle H. Cohen\*  
David Green & Mary Winton Green\*  
Robert & Jacqueline Sperandio\*

### LEGACY LEVEL

**\$1 MILLION TO \$1,999,999**  
Rita & Rudy Koehler  
The J.W. McConnell Family Foundation  
Education Initiatives Fund, in honour of Richard Monette  
Sandra & Jim Pitblado  
Nancy & the late George Taylor

### MILLENNIUM LEVEL

**\$500,000 TO \$999,999**  
Estate of Dr. Viera Barta  
Frederick & Stephanie Bishop\*  
In memory of Susan Harkins  
Beryl Ivey & Richard Ivey  
The Richard Ivey Foundation  
Janet & Richard Lint  
The late Frank & Nancy Moore\*  
Michael V. & Wanda Plachta  
Fund  
Deirdre Stevenson

### CENTURY LEVEL

**\$250,000 TO \$499,999**  
Karon C. Bales & Charles E. Beall Family Fund  
Elaine & the late Michael Davies  
The Horace W. Goldsmith Foundation  
Mary Ann & Robert Gorlin\*  
Estate of Marjorie Elizabeth Hamilton  
Mr. & Mrs. Richard W. Hurckes\*  
The Elizabeth Lang Fund  
Lawrence & Margaret Marsland  
The Philip & Berthe Morton Foundation  
The Geoff & Marion Neigh Fund  
Parnassus Foundation, courtesy of Jane & Raphael Bernstein\*  
Richard Rooney & Laura Dinner  
Cecil & Linda Rorabeck  
Estate of Cairine Elizabeth Scott  
Estate of J.M.B. Smith\*

The John & Renata Walker Fund  
The Watson/Osborn Fund\*  
The Helen & Joseph Weinberger Fund\*  
Anonymous (2)

### DYNASTY LEVEL

**\$100,000 TO \$249,999**  
Mr. & Mrs. G. John Adamson  
The Avalon Fund  
The Nicholas Barakett Fund  
Margret A. Beekel\*  
The Loris & Theodore Birnkant Fund\*  
Estate of Helen N. Bradburn\*  
The Fred C. & Eileen F. Calabrese Fund\*  
Cathy & Paul Cotton  
Barbara M. & Fred A. Erb\*  
Gatfield Family Foundation  
Heather Gibson & the late Allan Massingham  
Joan & Clifford Hatch Foundation  
Estate of Joan Ferriss Hatch  
Carol & Ronald Horowitz\*  
David Horowitz\*  
Estate of Dr. Mary Beth Jennings  
The John & Verla Killer Fund  
Margaret D. King  
Jane Fryman Laird\*  
Estate of Richard Lee\*  
John & Arlene Lewis\*  
Estate of M. Lenore Mackie  
Marcia Matsui & Roger Cotton  
Dr. Ross & Fran McElroy Fund  
Dr. E. Duncan McEwan & Dr. Joan C. McEwan  
Dr. Murlene McKinnon Fund, dedicated to the memory of Elizabeth Massey\*  
The R. Samuel McLaughlin Foundation  
Hymie & Roslyn Mida  
Eugene A. & Lois A. Miller\*  
The Mosaic Foundation (of the late Rita & Peter Heydon)\*  
Estate of Michael Murray  
Edwin A. Parsons  
Kayla & Richard Pechter\*  
Dr. Emma Plattor  
The Florence Richler Education Fund  
Martie & Bob Sachs\*  
Mr. & Mrs. William J. Sanderson  
Estate of Mary Campbell Smith  
Dr. & Mrs. Robert J. Sokol\*  
William H. Somerville  
Theatre Artisans' Apprenticeship Fund  
funded by the J.P. Bickell Foundation  
Andy & Helen Spriet  
The Summertime Fund\*  
Estate of Caroline Hamilton Tate\*  
Mary & George Turnbull  
William George Vivian Fund  
The John & Renata Walker Fund  
Leslie Clare Whitfield\*  
Matilda R. Wilson Fund\*  
Janice & the late Donald Woodley  
George & Pearl Zeltzer Family\*

The David Zussman & Sheridan Scott Educational Fund

### LIFETIME LEVEL

**\$50,000 TO \$99,999**  
The late Hope Abelson\*  
J.P. Bickell Foundation  
In Memory of Frances Wells Biddingar & Gretchen A. Gentile\*  
Butch Blake Fund  
Estate of William Earl Boettger  
Estate of Charlotte Maud Brown  
The late M. Joan Chalmers, C.C., O. Ont.  
The Eve Cork Fund  
The Tom & Joanne Cowan Fund  
Bob & Jan Daniels\*  
Charles & Margaret Dingman  
La & Philip Engel\*  
James & Florence Gibson Fund  
Estate of Mary-Jane D. Givens\*  
Muriel Goodbrand  
The late Wilfrid P. Gregory  
The Dr. Dennis & Dorothea Hacker Fund  
The Hay Foundation  
Desmond Heeley Design Internship  
Michael Homer & Ann Hébert  
Wayne & Leslie Ingram  
Estate of Peter Kilburn  
Raj & Shaila Kothari  
Shradha, Akshara & Shruti Kothari  
Beth L. Kronfeld\*  
Janet & the late Ellsworth Levine\*  
The Anne Linden Fund  
Sandy Linver & Buddy Kornman\*  
Estate of Mary Kathleen Lyle  
Mathers  
The Michael Mawson Fund  
Marg Misener  
Drs. M.L. Myers & the late W.P. Hayman  
Thomas & Ellen O'Flaherty\*  
Connie & the late Tom Orr  
Osler, Hoskin & Harcourt LLP  
Phillips, Hager & North Investment Management Ltd.  
Laura Pogson  
Cecil & Robert Rabinovitch  
Estate of Helen Leonore Roszell  
Carolyn Schiff & Noah Millman\*  
The Jack Segal Memorial Archival Fund  
Estate of B. Julian Sibold  
John & Jill Skinner  
The Marcia Katz Slotnick Fund\*  
Gordon & Elaine Steed  
Estate of Nancy G. Steen\*  
The Mary Helen Stoetzner Fund\*  
Robert Summers-Gill  
Estate of Dr. Clarke Dewey Wells\*  
John H. Whiteside Fund  
Max & Mary Wisgerhof\*  
The late Norton & Lucille Wolf  
Anonymous

### DONATIONS RECEIVED BETWEEN JANUARY 31, 2022 AND DECEMBER 31, 2022

Ellen A. Atkinson  
Estate of Marjorie Ann Baillie  
The Fred C. & Eileen F. Calabrese Fund\*  
Paul Raphael Feig Fund  
Gatfield Family Foundation  
Wayne & Leslie Ingram  
The Elizabeth Lang Fund  
Estate of Mary Beth Jennings  
Estate of Marlene M. Macke  
Dr. Murlene McKinnon Fund, dedicated to the memory of Elizabeth Massey  
Hymie & Roslyn Mida  
Red Robin Foundation at Strategic Charitable Giving Foundation  
Estate of Cairine Elizabeth Scott  
Jack Segal Memorial Archival Fund  
Nancy & the late George Taylor  
Estate of Catharine Frances Thompson  
Janice & the late Donald Woodley  
The David Zussman & Sheridan Scott Educational Fund  
Anonymous (1)

## TRIBUTE GIFTS

The following list reflects gifts made between January 1, 2022 and December 31, 2022.

### IN HONOUR

Seval Alkin  
Richard & Joan Barham  
Henry & Lykke Brandemark  
Sharon Butler  
John Cassaday  
Colm Feore  
Elizabeth Gaffney  
Jean Howard  
Peter & Theresa Hyland  
Mark James  
Linda & Robert Jenkins  
Jane Laird  
Rev. Robert Leland  
Arlene & John Lewis  
McPhee Family  
Dorothy Morgan  
Shannon Murray  
Bev Nicholson  
Stephen Ouimette  
Cathy & John Phillips  
Valerie Pinder  
Sandra & Jim Pitblado  
Peter & Susan Restler

Linda Rexer  
Martie Sachs  
Esther Sarick  
John Schubert  
Janice Segal  
Janet Shivas  
Rachel Smith-Spencer  
Mr. & Mrs. Soudack  
Carol Stephenson  
Stratford Festival Front of House, backstage crews, and all volunteers  
Stratford Festival Wardrobe Department  
Trudy Watson  
Ezra Wreford  
Jeremy Wreford

### IN MEMORY

Mickey Alexander  
Stephanie Amster  
Thomas A. Ashwell  
Diana Beacham  
Abbie Buktaw  
Donald Chapin

Michael Clancy  
Cathie Crozier  
David Cullen  
Hilary Culp  
Anita David  
Morris Davis  
Mary F. Elder  
Betty Freisen  
Patricia Hays Forsythe  
Rose Godfrey  
Nuala Goldberg  
Richard Healy  
Martha Healy  
Alice G. Herbert  
Jane G. Hill  
John & Doreen Hobbs  
Ted Jeffrey  
Shirley Jones  
Lois Keller  
Moya Kennedy  
Margaret "Mike" King  
Lawrence Leck  
Ildiko Lewis  
Mado & Kim Lie  
Malcolm S. Macdonald

Janeen McAdam  
Barbara McCaw  
Sally McCuskey  
Charles F. Moles  
Alice O'Connor  
Dorothy M. Oliver  
Marlene Pennington Hundert  
Robert J. Potters  
Carol Rankmore  
Anita Rochman  
Pamela Rowcliffe  
Noelle Scaville  
Larry & Lynn Scoville  
John D. Shaw  
Alexander Lionel Smith  
Helen Smith  
David Susser  
Steve Tatrallyay  
Gail Tolley  
Kathleen Wernick  
Sharyl Westveer  
Donald Woodley

## 2022 STRATFORD FESTIVAL GALA HONOURING LEN CARIOU

We extend our sincerest gratitude to our Sponsors, Table Hosts, Ticket Buyers and Donors

### GOLD TABLE

Laura Dinner & Richard Rooney  
Mary Ann & Robert Gorlin\*

### SILVER TABLES

Daniel Bernstein & Claire Foerster\*  
BMO Financial Group  
Canada Life  
Sylvia D. Chrominska  
Ian & Helen Giffen  
Power Corporation of Canada  
RBC Royal Bank  
Martie & Bob Sachs\*  
Barbara & John Schubert\*

### BRONZE TABLES

Bell Canada  
Jennifer Birmingham  
BT/A Advertising  
John Cassaday  
Hariri Pontarini Architects  
The Brian Linehan  
Charitable Foundation  
Alexandra & Tim MacDonald  
McKinsey & Company  
Shelley & David Peterson  
Wendy Pitblado  
Peter & Susan Restler\*  
Brian Rolfe & Bradley Berg  
Scotiabank  
The Slaight Family Foundation  
Megan & Geoffrey Smith  
TD Bank Group  
Anonymous

### VIP SINGLE TICKETS

Karon C. Bales & Charles E. Beall  
John & Dian Bell  
Barbara Crook/  
Danbe Foundation  
John & Arlene Lewis\*  
Esther Sarick  
Lawrence & Pamela Stevenson

### SINGLE TICKETS

Franklin & Stephanie Fammé  
Dr. David Goldbloom & Dr. Nancy Epstein  
Ginette Hamel & Cliff Trollpe  
Michael & Donna Milloy  
Rick Orr

Alan Shepard  
Andy & Helen Spriet  
Kirstene Steed & Marc Johnstone

### DONATIONS

David Adams  
Nancy Jamieson  
Pamela Jeffery  
Dr. Desta Leavine  
Jaime Leverton  
Harvey McCue  
Dr. M. Lee Myers  
Linda K. Rexer\*  
Anne Sado

### MEDIA PARTNER

The Globe and Mail

## SAVE THE DATE!

THE 2023 STRATFORD FESTIVAL GALA IS MONDAY, OCTOBER 2, 2023.

DETAILS COMING SOON!

**MAKERS  
OF THE MINT  
SMOOTHIE®**



**Rheo**  
THOMPSON  
CANDIES

CRAFTERS OF FINE CANDIES  
SINCE 1969.™

# STRATFEST@HOME

**ATTENTION ARTS LOVERS:**  
Gain access to one-of-a-kind digital content, including filmed stage productions, original theatre-inspired showcases, intimate concerts and exclusive content for kids!

**SUBSCRIBE NOW  
FOR ONLY \$7.99  
PER MONTH**



BETHANY KOVARIK AND CHAD MCFADDEN IN JUST SHORT OF REALITY.

## THE PROSPERO SOCIETY

The Stratford Festival is grateful to donors whose foresight to make a legacy gift, such as a bequest, life insurance, or beneficiary designation, to help guarantee future artistic excellence. In appreciation of their deep belief in the power of theatre, the Prospero Society invites donors to enjoy special events and recognition for their commitment. For more information, please contact Dawn Marie Schlegel, Director Legacy Giving: dmschlegel@stratfordfestival.ca or 1.800.561.1233 ext. 3330.

As of January 26, 2023

- |   |  |  |  |
|---|--|--|--|
| Eleanor Abra<br>Debbie & Ian Adare<br>David Agro<br>William W. Aitchison<br>George & Frances Alderson<br>Meredith Alston<br>Richard C. Altet &<br>Eric D. Johnson<br>Luther & Diane Aman<br>Carla Anderson<br>Edward & Jane Anderson<br>John Anderson<br>Robert Andrews<br>Alicia Annas<br>Callie Archer<br>Paul J. Asselin &<br>Jack H. Sysma<br>Ellen E. Atkinson<br>Sandra & James Bade<br>Renee Badertscher<br>Drs. Andrew &<br>Cornelia Baines<br>Jeannie Baird<br>Laurence R. &<br>Barbara K. Baker<br>Susan Baker-Bidgood<br>Deborah & Paul Barton<br>Pam M. Baxter &<br>Gordon T. Law<br>Larry T. Beare<br>Elin & Barry Becker<br>Margret A. Beekel<br>Kevin A. Bell<br>Michael & Sherie Berger<br>Joanne Berrigan<br>Helen L. Beuker<br>Stan & Jackie Bezaire<br>Stephanie &<br>Frederick Bishop<br>Jeffrey R. Black<br>Timothy John Blahout<br>J. Blake & C. Heyerdahl<br>Marilyn Blatnikoff<br>Elizabeth C. Bogner<br>Bob Boltz<br>Charles & Kathleen Bonneau<br>Monique Boulanger<br>In loving memory of<br>Joan Boyle, from her<br>grateful daughter<br>Larry Brodsky<br>Jerry & Carol Brown<br>K. Joanne Brown<br>Philip & Judith Brown<br>Schuyler Brown &<br>Margaret Meredith<br>Stephen Brown<br>Michael & Lynn Burshtin<br>Jean Busch<br>Rita & Ted Button<br>Dorothy-Lynne Byrne-Jones<br>Dr. Daniel &<br>Marshelle Caccamise<br>Fred C. &<br>Eileen F. Calabrese<br>The late Mary &<br>Peter Calamai<br>Barbara R. &<br>Samuel D. Caldwell<br>Georgina M. Cameron<br>Christine R. Campitelle<br>Brian & Kathryn Carey<br>Thomas A. Caster<br>Betty & Franco Catanzariti<br>Guy & the late<br>Alison Chadsey<br>Ann Christie<br>Molly Copus Christie<br>Mary F. Christner | Greg Clarke<br>George & Edna Clemans<br>Mr. & Mrs. James M. Clemens<br>Janice Coles<br>Lacey & Bill Collins<br>Donald L. Combe<br>Virginia Cooper<br>Christa & the late<br>Norm Correll<br>Constance & Ron Corrigan<br>Beverley & Robert Corsini<br>Priscilla Costello<br>Joanne & Tom Cowan<br>Joyce Crago<br>Ann & David Cram<br>Cynthia M. Crane<br>Mary C. Crichton<br>Dennis Cusack<br>Dr. Barry H. Davidson<br>Elizabeth & Ted Davidson<br>Susan & Vernon Davies<br>Jeffrey Davis<br>Janet Davison<br>Carol & the late<br>Patrick H. Deese<br>Katherine Dillon<br>Diana B. Dorken<br>Catherine Dowell<br>Patti Doyle<br>Dr. Gloria J. Earl<br>Philip Edwards<br>Marshall & Judi Egelnick<br>Mary F. & the late<br>Dr. John C. Elder<br>Roger & Janet Emery<br>La & Philip Engel<br>Barbara Evans<br>Daniel Evans &<br>Rosa Munoz<br>M. Fainer<br>Ann Fairhurst & Mark Cibra<br>Lois Farber<br>David John Farmer<br>Nita Farmer & Ken Stowe<br>Judy Faucett<br>Dr. Rinaldo &<br>Marilyn Fedorenko<br>Robert Feeney<br>Denise Fergusson<br>Fred & Eleanor Fether<br>Sheri Fillingham<br>Russell C. Finch & Carol<br>Nancy Finch<br>Douglas L. Flanders<br>Karen E. Fleming<br>Kathryn M. Fleming<br>Mary Pat & Louis Flores<br>Grace A. Franklin & the late<br>Randall B. Ripley<br>Gail Fricker & Blair Yeomans<br>Gloria Friedman<br>James C. Funk<br>Patricia J. Fyfe<br>Dr. J.M. Gaal &<br>Mr. B. Aravandino<br>Jane Gale<br>Ted & Sheila Gale<br>James & Jayne Gall<br>John & Therese Gardner<br>The late Dr. &<br>Mrs. Walter C. Gates Jr.<br>Gatfield & Campbell Arts<br>Foundation<br>William & Helen Gawley<br>Kate Gfeller & Kyran Cook<br>Heather V. Gibson<br>Steve & Lauran Gilbreath<br>Alexander Gluskin &<br>Shauna Sexsmith | Alan L. Goldberg (and<br>Whitney)<br>Mary Ann & Robert Gorlin<br>Barbara & Charles Graham<br>M. L. Sam Grant<br>Judith Gravidal, M.D. &<br>Murray Gordon<br>Susan Green & the late<br>Martin Foster<br>Heinz Gregor, in memory of<br>Jutta Lily Gregor<br>Marilyn Gropp<br>Heather Grace Gurd<br>Ronald Gustafson<br>Dr. Don & Mary Jane Gutoski<br>Dr. Dennis E. &<br>Dorothea Hacker<br>Kathlyn Hagerman<br>Louise Morfitt Hall<br>David G. Hallman<br>Margot & Jerry Halperin<br>Jody & Deborah Hamade<br>Janis Hancock<br>Carol & the late<br>Roger Haverfield<br>Gebadia Haverkamp<br>Ellen L. Hawman<br>Dr. Robert &<br>Mrs. Diana Heard<br>Barbara Heggie<br>Dr. & Mrs. J. Daniel Heilman<br>Jay Helms & Jerry O'Loughlin<br>Glenna Hemphill<br>Karla Hendrickson<br>Andrea & Dr. Edward Herzig<br>Robert A. Hetherington<br>Lauri & Jean Hivala<br>Mary E. Hofstetter, C.M. &<br>R. David Riggs.<br>Joan & Ron Holmes<br>Lori Ann Horley<br>Dr. Sharon Horlick<br>David Horowitz<br>Deanna Horton<br>Susan A. Howard<br>Sara Hradecky<br>Archie & Jean Hunter<br>Wayne & Leslie Ingram<br>Marion Isherwood<br>Cheryll L. Jarolimek<br>Kathleen A. Jerome<br>Inheritance Trust<br>Glenn & Joan Johnson<br>Dr. & Mrs. Kerry Johnson<br>Monika H. Johnston<br>Scott & Beth Jorgensen<br>Carol & Gilbert Kachmar<br>Eleanor Kane<br>Martin Katz<br>Dannette Gentile Kauffman<br>Kimberly Kelley<br>T. M. Kelly<br>Max Kenney<br>Judge James W. &<br>Virginia P. Kerr<br>David Kew<br>Marjory & James W. Kilgour<br>Marie E. Kingdon<br>John Koegler<br>Beth L. Kronfeld<br>Michael J. &<br>Katherine M. Lague<br>Jane Fryman Laird<br>Anthony La Marca & the late<br>Thomas A. Dolan<br>Marilyn R. Laughlin<br>Ruth & the late John Lawson<br>Anne Louise Layton<br>Desta F. Leavine | Rev. Robert K. &<br>Mrs. Emily Leland<br>Dr. Renee S. Lerche<br>Janet & the late<br>Ellsworth Levine<br>Dan L. Lewis &<br>Doris F. Wittenburg<br>Maury & Leslie Lieberman<br>Cathy Lindsey<br>Janet & Richard Lint<br>W.H. Loewen<br>Laura Lloyd-Carella<br>Ann & David Love<br>John T. Lucas<br>Joanne Luchuk<br>Patricia Lumsden<br>Earl K. & Theresa A. Lundy<br>Carole & John Macaulay<br>Tim & Alexandra MacDonald<br>James MacDougall<br>Polly K. A. MacFarlane<br>Michele A. Machowicz &<br>Thomas J. Becvar<br>Peter D. Mackey<br>Carl MacMillan<br>Thomas A. MacWilliam<br>Cheryl Elisabeth Manny<br>Paul Maranger<br>Mel Marsh & Rick Rutan<br>Cynthia L. Martz<br>Keith & Chris Masterman<br>Marcia Matsui &<br>Roger Cotton<br>Cynthia May<br>Mr. & Mrs. W. Ronald<br>McCallum<br>Sharon & Harvey McCue<br>Paul & Margo McDonnell<br>Dr. Ross & Fran McElroy<br>Graeme &<br>Charlotte McIntosh<br>Dr. Murlene E. McKinnon<br>Lynette Eloise McPeake<br>Sylvia M. McPhee<br>Nancy McPherson<br>Marcia L. Meier &<br>Dr. Klaus V. Meier<br>Hon. Michael A. Meighen &<br>Kelly Meighen<br>Bob Meinschen<br>Kevin & Tania Meldrum<br>Pennie A. Meyers<br>Alan C. Middleton<br>Kathleen Minor<br>Marg Misener<br>Andrea F. Mitchell<br>Dianne Moncrief<br>Mark Monette &<br>Judy F. Lane<br>Mary Elizabeth & Ron Moore<br>Nancy & the late<br>Franklin H. Moore<br>F. Daniel Moreau<br>Dot & the late<br>Patrick Morgan<br>Catherine & Paul Motz<br>Richard C. Mulock<br>Dr. M. L. Myers & the late<br>Dr. W. P. Hayman<br>Chris Neil<br>Page Nelson, in memory of<br>Judith Nelson<br>Arthur & Marilyn Neumann<br>Richard Newland<br>Trish & Jim Nicholson<br>Jeffrey & Peggy Norton<br>Carole Ann O'Connell &<br>Mark Boyle |
|---|--|--|--|

## MODERN AMENITIES & THOUGHTFUL DESIGN



With newly renovated banquet facilities, the possibilities are endless! If you are planning a wedding, celebration, meeting or conference you'll find unmatched expertise, creative menus and personalized service.

At Best Western Plus The Arden Park Hotel, we offer large newly renovated guest rooms and suites, an indoor pool and hot tub, fitness centre, and a fresh new dining experience with daily features and Sunday brunch. Offering ample free parking and centrally located just minutes from the downtown core, Festival Theatre and Stratford's east end. Together our staff and management are dedicated and committed to giving only the highest level of service to all our guests.



ardenpark.ca  
1.877.788.8818  
519.275.2936



The late Thomas H. & Ellen J. O'Flaherty  
 Lawrence J. Olszewski, PhD  
 Susan & the late Tom O'Neill  
 Jonathan F. Orser  
 Nancy K. Owens  
 Harold Pankrac  
 Deborah Pantoni  
 Elizabeth Papps  
 Terrence Paris  
 Curtis L. & Jody A. Passafume  
 William P. Pavlov  
 Richard & Sandra Pearse  
 Patricia Peloso  
 Todd R. Pepper  
 Catherine Perkin  
 Allan & Kel Pero  
 Dr. Catherine Petrimoulx  
 Matthew I. Pickus  
 Sandra & Jim Pitblado  
 Michael V. & Wanda Plachta  
 Laura Pogson  
 Keith Potter & Cathy Riggall  
 Cheryl & William Povalla  
 Wallace & the late Diane Pretzer  
 Chris J. Price  
 Heather & John T. A. Proctor  
 Nira Pullin  
 Raymond P. Quinlan  
 Sondra C. Rabin  
 William & Isabelle Radock  
 Barbara Rand  
 Carol Rankmore  
 Mira Ratkaj  
 Sally & the late Larry Rayner  
 Patricia Reavy & Denis Beatty  
 Marcia J. & the late Douglas S. Rector  
 Anthony L. Refells

Rodney & Helene Reid  
 Ann K. Reynolds  
 Wayne & Wendy Rider  
 Hannah Ridge  
 Sharon & Cameron Ridsdale  
 Margaret A. Riffin  
 Cynthia Ann & the late Dr. Forrest Riordan III  
 Joseph & Cynthia Ripley  
 Peter S. Roberts  
 Jim Robertson & Jim Scott  
 Donna L. Roessler  
 Lisa & Paul Rohrbaugh  
 Susan Pfaff Rojas  
 Richard Rooney & Laura Dinner  
 Barbara Lynn Ross & Brian Crockett  
 John Rosten & Cheryl Weeks-Rosten  
 Lillian Roth  
 Martie & Bob Sachs  
 Sandra & Paul Sales  
 Susan & Peter Salomonsson  
 Dr. & Mrs. Peter W. Schilke  
 John & Barbara Schubert  
 Claire M. Schwartz & Mark R. Zdziarski  
 Elizabeth Ann Scott  
 Helen & John Scott  
 Gerard Seijts  
 Christine & Richard Seip  
 Retta Semones & Elliot Slotnick  
 Michael & Joann Sharrow  
 Catherine Elliot Shaw  
 Dr. Cathy J. Siebert  
 Pamela Simmons  
 Father Earl F. Simone  
 Karen & Jonathan Slater  
 Marcia Katz Slotnick  
 Barbara A. Smith

Dale W. Smith  
 Doug & Maggie Smith  
 Gloria & Steve Smith  
 Russ Smith  
 Rachel Smith-Spencer  
 Sperandio Family Foundation  
 Barry & Sharlyn Stare  
 Dennis & Rhea Steffler  
 Carol Stephenson  
 Jayne Stewart  
 William R. Stewart  
 Glen & Sandra Strawsburg  
 Kerry W. Stuckey  
 Robert Summers-Gill  
 Danielle & David Susser  
 Randal & the late Nancy Sutton  
 H. Allen & Valerie R. Swanson  
 Ronald P. Swenson & Susan L. Daniels  
 Violet & the late Don Sykes  
 Melinda Szilva & Jeffrey Fila  
 Nargis Tarmohamed & Shaukat Mangalji  
 Lynne Taylor  
 Nancy Theisen  
 Christine Thomas  
 Gary & Judy Thompson  
 Marilyn & Jim Thompson  
 Bill & Mary Todt  
 Riki Turofsky & Charles Petersen  
 The Rev. Richard L. & Margaret E. Ullman  
 Marie & Peter Van Der Gulik  
 Jane & Robert Van der Kraan  
 Mary W. VanDike  
 Hermine J. van Nuis  
 Valerie Van Reenen

Peter Varty & the late Pat Martin  
 William & Sarah Vasse  
 Dina Vaz  
 Nancy Johnson Vazzano  
 Dr. Nancy J. Vivian  
 Anne Walsh  
 Susan H. Warren  
 Deana & Lyman Welch  
 Drummond White & Norah Love  
 Leslie Clare Whitfield  
 F. Alan Wilson  
 Violet L. Wilson  
 Nancy Winters  
 John Wirtz IV  
 Mary & Max Wisgerhof  
 Stan & Ros Witkin  
 Duncan & Claudia Wood  
 Janice & the late Donald Woodley  
 Maggie Woodley  
 Dr. Gerald & Nancy Wright  
 Dr. Louis & Mary Jane Zako  
 Bernice & Peter Ziegler  
 Suzanne & David Zimmerman  
 Roger & Carol Zinnecker  
 David Zussman & Sheridan Scott  
 Anonymous (59)

**Julie Heitbohrer**  
 SALES REPRESENTATIVE  
 (DIRECT) 519-276-1899  
 jheitbohrer@sutton.com



## Welcome Home



sutton group - first choice realty ltd., brokerage  
 AN INDEPENDENT MEMBER BROKER



# Doors Open Ontario

Free events April to October!



Winter Garden Theatre. Photo: Josh McSweeney.

Discover the story behind every door!

[doorsopentoronto.on.ca](http://doorsopentoronto.on.ca)



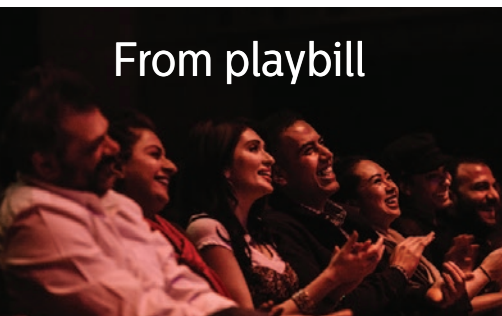
Presenting Sponsor



**THE GLOBE AND MAIL**

## Championing the arts from the page to the stage

Pleased to support the 2023 Stratford Festival season



From playbill



to manuscript

[globeandmail.com/arts](http://globeandmail.com/arts)

# Sunny days ahead.

## HELP SEND KIDS TO CAMP



LEARN MORE AND DONATE NOW  
2023 GOAL: \$650,000  
[thestar.com/freshairfund](http://thestar.com/freshairfund)

**TORONTO STAR**

PROUD SPONSOR OF THE STRATFORD FESTIVAL

Scan to donate



FIND US ON    

# STRATFORD DIRECT

## LUXURY COACH SERVICES BETWEEN DOWNTOWN TORONTO AND OUR THEATRES.

### TORONTO RETURN \$34

Available on performance days throughout the season, with some exceptions.

### TUESDAY TO THURSDAY AND SUNDAYS

Departs Toronto – 10 a.m.

Stratford Pickup Begins – 5 p.m.

### FRIDAYS AND SATURDAYS

Departs Toronto – 10 a.m. and 3 p.m.

Stratford Pickup Begins – 5 p.m. and 11 p.m.

Departs from downtown Toronto at the InterContinental Hotel. Drop offs at and return trips from all our theatres.

### STRATFORDFESTIVAL.CA/BUS

Stratford Direct is generously supported by The William and Nona Heaslip Foundation and by the R. Howard Webster Foundation.



Call 1.800.567.1600 to arrange accessible transportation.



# A MESSAGE FROM OUR EQUITY, DIVERSITY AND INCLUSION TEAM

The work of Equity, Diversity and Inclusion is a collaborative effort from all of us who see the Festival as our home. It is through this work that we open the doors of this home and work to build long-lasting spaces of belonging and inclusion for all those who may enter those doors from their respective communities. This effort is represented on our stages through the diverse programming that showcases stories, voices and experiences that bring all aspects of this world to the forefront and hopefully through this exposure and exploration bring us closer together as people. This work is fulfilled through the representation of our staff as we are committed to ongoing actions to have a diverse array of faces, ages and abilities who welcome you to the theatre. This work extends to our relationship with our hometown. In conjunction with the city of Stratford itself, we are dedicated to solidifying this theatre as a true community partner, working alongside the numerous local organizations and businesses with the goal of creating a welcoming space for everyone—residents and visitors alike.

The effort of creating an equitable and inclusive theatre is a process and it is ongoing. The demands and needs of the patrons we hope to serve through this theatre are constantly at the top of our mind, and it is our mission to meet these demands and fulfill the Festival's commitment to offering a gathering spot for the world—a place where people from all over can come and share in a communal experience. Through having a consistent focus on EDI we hope to not only enhance the work seen at the Festival on all of its stages but to also enhance the various communities we have the potential to represent.



PHOTOGRAPHY BY ANN BIGGLEY.

## STAFF LIST

**Artistic Director**  
Antoni Cimolino

**Executive Director**  
Anita Gaffney

**DIRECTORS' OFFICE**

**Producer**  
David Auster

**Creative Planning Director**  
Jason Miller

**Director of the Foerster Bernstein New Play Development Program**  
Keith Barker

**Director of the Birmingham Conservatory**  
Janine Pearson

**Director of the Langham Directors' Workshop, and Artistic Associate for Planning**  
Esther Jun

**Meighen Forum Director**  
Julie Miles

**Associate Producer**  
Bonnie Green

**New Play Development Associates**  
Carmen Aguirre  
Mukonzi Musyoki

**Corporate Secretary & Executive Assistant to the Artistic Director**  
Joy Wishart

**Executive Assistant to the Executive Director**  
Marion Burr

**Company Manager**  
Hilary Nichol

**Producing Coordinator**  
Heather Cassels

**Laboratory Coordinator**  
Andrea Pestana

**Forum Coordinator**  
Gregory McLaughlin

**Assistant Company Manager**  
Mira Henderson

**Forum Assistant**  
James Hyett

**Producing Assistants**  
Mia Masui  
Beka Morrison

**CASTING**

**Casting Director**  
Beth Russell

**Associate Casting Director**  
Ari Weinberg

**Casting Associate**  
Jennifer Emery

**COACHES**

**Co-Heads of Coaching**  
Paul de Jong  
Kennedy C. MacKinnon

The Co-Heads of Coaching positions at the Stratford Festival are generously endowed by David Green & Mary Winton Green

**Head of Voice Emerita**  
Ann Skinner

**Alexander Technique and Movement Coach**  
Kelly McEvenue

**Movement Coach**  
Adrienne Gould

## STAFF LIST

**Voice, Text and Dialect Coaches**  
Rebecca Cuthbertson  
Martha Farrell  
Jane Gooderham  
Janine Pearson

**Assistant Voice, Text and Dialect Coach**  
Peter N. Bailey

Generously endowed by Douglas and Janet Watson through the Professional Development Program for Coaches

**Speech-Language Pathologist & Voice Coach**  
Lori Holmes

**Singing Coach**  
Jennie Such

**Text Coach**  
Tim Welham

**Guest Coaches**  
Frank Bach  
Ginette Hamel

### MUSIC

**Director of Music**  
Franklin Brasz

**Director of Music Emeritus**  
Berthold Carrière

**Music Administrator**  
Janice Owens

### ADMINISTRATION

**Administrative Director**  
Shelley Stevenson

### ARCHIVES

**Interim Archives Manager**  
Stephanie Valliant

**Archivist**  
Christine Schindler

**Archival Processing Technician**  
Amanda Moore

**Archives Assistants**  
Nora Polley  
Ann Stuart

### EDUCATION

**Tim and Frances Price Director of Education**  
Lois Adamson

**Associate Director of Education**  
Katherine Laing

**Education Associates**  
Heather Debling  
Kerri Lee  
Arielle Zamora

### HUMAN RESOURCES

**Director of Human Resources**  
Dawnette Baldeo

**Interim Human Resources Manager**  
Leah Vandermeulen

**Human Resources Coordinator**  
Michele Little

**Labour Relations Manager**  
Neofitos Vritsios

**Payroll Manager**  
Kathy McKellar

**Payroll Coordinators**  
Lisa Grogan  
Heather Marriott  
Chris Zonneville

**Payroll/HR Administrator**  
Taylor Rolston

**Company Accommodations Supervisor**  
Cindy Cnockaert

**Company Accommodations Assistant**  
Jo Woolnough

**Health & Safety Coordinator**  
Fiona Gent

**COVID Safety Coordinator**  
Daniel Van Winden

### ADVANCEMENT

**Senior Director of Advancement**  
Jana Gordon

**Director, Playwrights' Circle**  
Sharon Butler

**Director, Membership**  
Ceairy Free

**Director, Major Gifts, GTA**  
Laura Clark

**Director, Major Gifts & U.S. Outreach**  
Christine Seip

**Director, Legacy Giving**  
Dawn Marie Schlegel

**Membership Coordinator**  
Susan Mavity

**Membership Administrator**  
Aislinn McCauley

**Playwrights' Circle Administrator**  
Jennifer McCaw

**Advancement Assistant**  
Heather Bedard

**Director of Equity, Diversity and Inclusion**  
Davonn Snipes

**Equity, Diversity and Inclusion Manager**  
Meineka Kulasinghe

**Pre-Rehearsal Orientation Coordinator**  
E.B. Smith

**Accessibility Coordinator**  
Kayla Besse

**Special thanks for the guidance and support of the Anti-Racism Committee:**  
E.B. Smith – Chair  
C.J. Astronomo  
Samantha McCue  
Mukonzi Musyoki  
Joanna Yu

**First Nations, Inuit and Métis Circle:**

**Consulting Elder**  
Elizabeth Stevens

Asa Benally  
Jay Havens  
Wahsontio Kirby  
Samantha McCue  
Bruce Sinclair  
Deneh'Cho Thompson  
Gordon Patrick White

### FINANCE & FACILITIES

#### FINANCE

**Director of Finance & Facilities**  
Darryl Huras

**Controller**  
Emily Rooke

**Finance Manager**  
Leanne Atkinson

**Senior Accountant**  
Todd Bridges

**Accountant**  
Alexandria Pretty

**Finance Assistant**  
Shelley Assayag  
Samantha McCann

#### FACILITIES

**Facilities Manager**  
Jeff Heggie

**Associate Facilities Manager**  
Ryan Wagner

**Assistant Manager, Facilities Services**  
Leanne Herbert Malvern

**Assistant Manager, Facilities Operations**  
Kyle Llewellyn

**Maintenance Carpenter**  
Micah Hussey

**Chief Engineer**  
John Luesink

**Shift Engineers**  
Paula Burns  
Dakota Gates  
Justin Soetemans  
Chad Wheeler  
Nick Williamson

**Electricians**  
Tony Iacobellis  
Jordan Ruston

**Head Gardener**  
Joelle Bulbrook

**Seasonal Full Time Gardeners**  
Rosemary Galloway  
Elizabeth Lazear  
Benjamin McConkey  
Sarah Tuer Sipos

**Student Gardeners**  
Makayla Duff  
Ella Johnson  
Cole Meadows  
Ryan Middegaal  
Maddie Mortimer  
Dailey Trainor

**Head of Maintenance**  
Ron Brown

**Maintenance Lead Hand**  
Lori Adcock  
Val Barker

**Maintenance**  
Robert Barrett  
Lisa Blackburn  
Marc Boisvert  
Craig Brown  
Dar Del Chiaro  
Emma Chipman  
William Clelland  
Alyssa Daly  
Thip Davis

Diane Dench  
Catherine Dishman  
Jacqueline Dodier  
Wayne Dunn  
Matthew Hamming  
Mandy Illman  
Jude Michael Jones Daet

Heather Knight  
Christine Koehler  
Marjorie Lundrigan  
Cathy McCue  
Janet McFarlane  
Larisa Orlova  
Nancy Plummer  
Sherry Priestap  
Lynn Rohrer  
Nancy Roney  
Christopher Santos  
Ryan Sim  
Tara Spencer  
Clare Stockley  
Glen Sutherland  
Sandy Thistle  
Art Tucker

**Tour Guides**  
Janet Markus  
Sarah Oseni  
Kim Thompson

**Ushers**  
Chris Adair  
Mubashira Ahmed  
Louise Allen  
Rick Alpe  
Glenn Archer  
Carol Arnett  
Emelia Auster  
Gloria Bates  
Ethan Bell  
Gordon Bell  
Karen Bennett  
Paula Bentley  
Karen Brooks  
Gabe Buck  
Don Campbell  
Cecil Chappell  
Aislynn Clayton  
Janis Creeden  
Jen Culligan  
Amelia Darling  
Jessica Darling  
Kimberly De Haan  
Connie Delarge  
Zoe Deligianis  
Mary Dench  
Eve Diemand  
Tracyllynn Dobbin  
Elizabeth Edwards  
Sarah Elliott  
Chelsea Feeney  
Barbara Finkelstein  
Beth Fischer  
Hayden Fischer  
Emily Frankruyter  
Rachel Frederick  
Leanne Garvey  
Keagan Goforth  
Marie Golbeck  
Louise Gorvett  
Melissa Graham  
Maureen Gratton  
Paige Groothuis  
Garrett Guymier  
Emma Haase  
Judy Hart  
Sherrie Hearn-Smith  
Aubrey Henderson  
Greg Hoggarth  
Judy Hoggarth  
Debra Holota  
Lisa Iowski  
Beth Jones  
Donna Karaz

**Information Technology & Application Development**

**Director of IT & Application Development**  
Darren Worswick

**Manager of Information Technology**  
Paul Muncaster

**Systems Administrator**  
Andrei Martchenko

**Systems Administrator**  
Matthew Wyatt

**Systems Technician**  
Sefton Roach

**IT Technicians**  
Andrew Bentley  
Reid Robinson

**Lead Developer**  
Bryan Richardson

**MARKETING, AUDIENCE DEVELOPMENT, DIGITAL CONTENT & CORPORATE SPONSORSHIP**

**Senior Director of Marketing and Audience Development**  
Michael Adams

### AUDIENCE DEVELOPMENT

**Director of Audience Development**  
Sarah Hamza

### FRONT OFFICE

**Manager of Patron Services**  
Kris Bernard

**Senior House Manager**  
Sam Tynkynen

### HOUSE MANAGERS

**Festival Theatre**  
Victoria Sandquist

**Avon Theatre**  
David Mason

**Tom Patterson Theatre**  
Mark James

**Studio Theatre/Swings**  
Derek Barnes  
Kim De Haan  
Hayden Fischer  
Sarah Pitman

**Tour Guides**  
Janet Markus  
Sarah Oseni  
Kim Thompson

**Ushers**  
Chris Adair  
Mubashira Ahmed  
Louise Allen  
Rick Alpe  
Glenn Archer  
Carol Arnett  
Emelia Auster  
Gloria Bates  
Ethan Bell  
Gordon Bell  
Karen Bennett  
Paula Bentley  
Karen Brooks  
Gabe Buck  
Don Campbell  
Cecil Chappell  
Aislynn Clayton  
Janis Creeden  
Jen Culligan  
Amelia Darling  
Jessica Darling  
Kimberly De Haan  
Connie Delarge  
Zoe Deligianis  
Mary Dench  
Eve Diemand  
Tracyllynn Dobbin  
Elizabeth Edwards  
Sarah Elliott  
Chelsea Feeney  
Barbara Finkelstein  
Beth Fischer  
Hayden Fischer  
Emily Frankruyter  
Rachel Frederick  
Leanne Garvey  
Keagan Goforth  
Marie Golbeck  
Louise Gorvett  
Melissa Graham  
Maureen Gratton  
Paige Groothuis  
Garrett Guymier  
Emma Haase  
Judy Hart  
Sherrie Hearn-Smith  
Aubrey Henderson  
Greg Hoggarth  
Judy Hoggarth  
Debra Holota  
Lisa Iowski  
Beth Jones  
Donna Karaz

**Ushers**  
Chris Adair  
Mubashira Ahmed  
Louise Allen  
Rick Alpe  
Glenn Archer  
Carol Arnett  
Emelia Auster  
Gloria Bates  
Ethan Bell  
Gordon Bell  
Karen Bennett  
Paula Bentley  
Karen Brooks  
Gabe Buck  
Don Campbell  
Cecil Chappell  
Aislynn Clayton  
Janis Creeden  
Jen Culligan  
Amelia Darling  
Jessica Darling  
Kimberly De Haan  
Connie Delarge  
Zoe Deligianis  
Mary Dench  
Eve Diemand  
Tracyllynn Dobbin  
Elizabeth Edwards  
Sarah Elliott  
Chelsea Feeney  
Barbara Finkelstein  
Beth Fischer  
Hayden Fischer  
Emily Frankruyter  
Rachel Frederick  
Leanne Garvey  
Keagan Goforth  
Marie Golbeck  
Louise Gorvett  
Melissa Graham  
Maureen Gratton  
Paige Groothuis  
Garrett Guymier  
Emma Haase  
Judy Hart  
Sherrie Hearn-Smith  
Aubrey Henderson  
Greg Hoggarth  
Judy Hoggarth  
Debra Holota  
Lisa Iowski  
Beth Jones  
Donna Karaz

**Ushers**  
Chris Adair  
Mubashira Ahmed  
Louise Allen  
Rick Alpe  
Glenn Archer  
Carol Arnett  
Emelia Auster  
Gloria Bates  
Ethan Bell  
Gordon Bell  
Karen Bennett  
Paula Bentley  
Karen Brooks  
Gabe Buck  
Don Campbell  
Cecil Chappell  
Aislynn Clayton  
Janis Creeden  
Jen Culligan  
Amelia Darling  
Jessica Darling  
Kimberly De Haan  
Connie Delarge  
Zoe Deligianis  
Mary Dench  
Eve Diemand  
Tracyllynn Dobbin  
Elizabeth Edwards  
Sarah Elliott  
Chelsea Feeney  
Barbara Finkelstein  
Beth Fischer  
Hayden Fischer  
Emily Frankruyter  
Rachel Frederick  
Leanne Garvey  
Keagan Goforth  
Marie Golbeck  
Louise Gorvett  
Melissa Graham  
Maureen Gratton  
Paige Groothuis  
Garrett Guymier  
Emma Haase  
Judy Hart  
Sherrie Hearn-Smith  
Aubrey Henderson  
Greg Hoggarth  
Judy Hoggarth  
Debra Holota  
Lisa Iowski  
Beth Jones  
Donna Karaz

**Ushers**  
Chris Adair  
Mubashira Ahmed  
Louise Allen  
Rick Alpe  
Glenn Archer  
Carol Arnett  
Emelia Auster  
Gloria Bates  
Ethan Bell  
Gordon Bell  
Karen Bennett  
Paula Bentley  
Karen Brooks  
Gabe Buck  
Don Campbell  
Cecil Chappell  
Aislynn Clayton  
Janis Creeden  
Jen Culligan  
Amelia Darling  
Jessica Darling  
Kimberly De Haan  
Connie Delarge  
Zoe Deligianis  
Mary Dench  
Eve Diemand  
Tracyllynn Dobbin  
Elizabeth Edwards  
Sarah Elliott  
Chelsea Feeney  
Barbara Finkelstein  
Beth Fischer  
Hayden Fischer  
Emily Frankruyter  
Rachel Frederick  
Leanne Garvey  
Keagan Goforth  
Marie Golbeck  
Louise Gorvett  
Melissa Graham  
Maureen Gratton  
Paige Groothuis  
Garrett Guymier  
Emma Haase  
Judy Hart  
Sherrie Hearn-Smith  
Aubrey Henderson  
Greg Hoggarth  
Judy Hoggarth  
Debra Holota  
Lisa Iowski  
Beth Jones  
Donna Karaz

**Ushers**  
Chris Adair  
Mubashira Ahmed  
Louise Allen  
Rick Alpe  
Glenn Archer  
Carol Arnett  
Emelia Auster  
Gloria Bates  
Ethan Bell  
Gordon Bell  
Karen Bennett  
Paula Bentley  
Karen Brooks  
Gabe Buck  
Don Campbell  
Cecil Chappell  
Aislynn Clayton  
Janis Creeden  
Jen Culligan  
Amelia Darling  
Jessica Darling  
Kimberly De Haan  
Connie Delarge  
Zoe Deligianis  
Mary Dench  
Eve Diemand  
Tracyllynn Dobbin  
Elizabeth Edwards  
Sarah Elliott  
Chelsea Feeney  
Barbara Finkelstein  
Beth Fischer  
Hayden Fischer  
Emily Frankruyter  
Rachel Frederick  
Leanne Garvey  
Keagan Goforth  
Marie Golbeck  
Louise Gorvett  
Melissa Graham  
Maureen Gratton  
Paige Groothuis  
Garrett Guymier  
Emma Haase  
Judy Hart  
Sherrie Hearn-Smith  
Aubrey Henderson  
Greg Hoggarth  
Judy Hoggarth  
Debra Holota  
Lisa Iowski  
Beth Jones  
Donna Karaz

**Ushers**  
Chris Adair  
Mubashira Ahmed  
Louise Allen  
Rick Alpe  
Glenn Archer  
Carol Arnett  
Emelia Auster  
Gloria Bates  
Ethan Bell  
Gordon Bell  
Karen Bennett  
Paula Bentley  
Karen Brooks  
Gabe Buck  
Don Campbell  
Cecil Chappell  
Aislynn Clayton  
Janis Creeden  
Jen Culligan  
Amelia Darling  
Jessica Darling  
Kimberly De Haan  
Connie Delarge  
Zoe Deligianis  
Mary Dench  
Eve Diemand  
Tracyllynn Dobbin  
Elizabeth Edwards  
Sarah Elliott  
Chelsea Feeney  
Barbara Finkelstein  
Beth Fischer  
Hayden Fischer  
Emily Frankruyter  
Rachel Frederick  
Leanne Garvey  
Keagan Goforth  
Marie Golbeck  
Louise Gorvett  
Melissa Graham  
Maureen Gratton  
Paige Groothuis  
Garrett Guymier  
Emma Haase  
Judy Hart  
Sherrie Hearn-Smith  
Aubrey Henderson  
Greg Hoggarth  
Judy Hoggarth  
Debra Holota  
Lisa Iowski  
Beth Jones  
Donna Karaz

**Ushers**  
Chris Adair  
Mubashira Ahmed  
Louise Allen  
Rick Alpe  
Glenn Archer  
Carol Arnett  
Emelia Auster  
Gloria Bates  
Ethan Bell  
Gordon Bell  
Karen Bennett  
Paula Bentley  
Karen Brooks  
Gabe Buck  
Don Campbell  
Cecil Chappell  
Aislynn Clayton  
Janis Creeden  
Jen Culligan  
Amelia Darling  
Jessica Darling  
Kimberly De Haan  
Connie Delarge  
Zoe Deligianis  
Mary Dench  
Eve Diemand  
Tracyllynn Dobbin  
Elizabeth Edwards  
Sarah Elliott  
Chelsea Feeney  
Barbara Finkelstein  
Beth Fischer  
Hayden Fischer  
Emily Frankruyter  
Rachel Frederick  
Leanne Garvey  
Keagan Goforth  
Marie Golbeck  
Louise Gorvett  
Melissa Graham  
Maureen Gratton  
Paige Groothuis  
Garrett Guymier  
Emma Haase  
Judy Hart  
Sherrie Hearn-Smith  
Aubrey Henderson  
Greg Hoggarth  
Judy Hoggarth  
Debra Holota  
Lisa Iowski  
Beth Jones  
Donna Karaz

**Ushers**  
Chris Adair  
Mubashira Ahmed  
Louise Allen  
Rick Alpe  
Glenn Archer  
Carol Arnett  
Emelia Auster  
Gloria Bates  
Ethan Bell  
Gordon Bell  
Karen Bennett  
Paula Bentley  
Karen Brooks  
Gabe Buck  
Don Campbell  
Cecil Chappell  
Aislynn Clayton  
Janis Creeden  
Jen Culligan  
Amelia Darling  
Jessica Darling  
Kimberly De Haan  
Connie Delarge  
Zoe Deligianis  
Mary Dench  
Eve Diemand  
Tracyllynn Dobbin  
Elizabeth Edwards  
Sarah Elliott  
Chelsea Feeney  
Barbara Finkelstein  
Beth Fischer  
Hayden Fischer  
Emily Frankruyter  
Rachel Frederick  
Leanne Garvey  
Keagan Goforth  
Marie Golbeck  
Louise Gorvett  
Melissa Graham  
Maureen Gratton  
Paige Groothuis  
Garrett Guymier  
Emma Haase  
Judy Hart  
Sherrie Hearn-Smith  
Aubrey Henderson  
Greg Hoggarth  
Judy Hoggarth  
Debra Holota  
Lisa Iowski  
Beth Jones  
Donna Karaz

**Ushers**  
Chris Adair  
Mubashira Ahmed  
Louise Allen  
Rick Alpe  
Glenn Archer  
Carol Arnett  
Emelia Auster  
Gloria Bates  
Ethan Bell  
Gordon Bell  
Karen Bennett  
Paula Bentley  
Karen Brooks  
Gabe Buck  
Don Campbell  
Cecil Chappell  
Aislynn Clayton  
Janis Creeden  
Jen Culligan  
Amelia Darling  
Jessica Darling  
Kimberly De Haan  
Connie Delarge  
Zoe Deligianis  
Mary Dench  
Eve Diemand  
Tracyllynn Dobbin  
Elizabeth Edwards  
Sarah Elliott  
Chelsea Feeney  
Barbara Finkelstein  
Beth Fischer  
Hayden Fischer  
Emily Frankruyter  
Rachel Frederick  
Leanne Garvey  
Keagan Goforth  
Marie Golbeck  
Louise Gorvett  
Melissa Graham  
Maureen Gratton  
Paige Groothuis  
Garrett Guymier  
Emma Haase  
Judy Hart  
Sherrie Hearn-Smith  
Aubrey Henderson  
Greg Hoggarth  
Judy Hoggarth  
Debra Holota  
Lisa Iowski  
Beth Jones  
Donna Karaz

**Ushers**  
Chris Adair  
Mubashira Ahmed  
Louise Allen  
Rick Alpe  
Glenn Archer  
Carol Arnett  
Emelia Auster  
Gloria Bates  
Ethan Bell  
Gordon Bell  
Karen Bennett  
Paula Bentley  
Karen Brooks  
Gabe Buck  
Don Campbell  
Cecil Chappell  
Aislynn Clayton  
Janis Creeden  
Jen Culligan  
Amelia Darling  
Jessica Darling  
Kimberly De Haan  
Connie Delarge  
Zoe Deligianis  
Mary Dench  
Eve Diemand  
Tracyllynn Dobbin  
Elizabeth Edwards  
Sarah Elliott  
Chelsea Feeney  
Barbara Finkelstein  
Beth Fischer  
Hayden Fischer  
Emily Frankruyter  
Rachel Frederick  
Leanne Garvey  
Keagan Goforth  
Marie Golbeck  
Louise Gorvett  
Melissa Graham  
Maureen Gratton  
Paige Groothuis  
Garrett Guymier  
Emma Haase  
Judy Hart  
Sherrie Hearn-Smith  
Aubrey Henderson  
Greg Hoggarth  
Judy Hoggarth  
Debra Holota  
Lisa Iowski  
Beth Jones  
Donna Karaz

**Ushers**  
Chris Adair  
Mubashira Ahmed  
Louise Allen  
Rick Alpe  
Glenn Archer  
Carol Arnett  
Emelia Auster  
Gloria Bates  
Ethan Bell  
Gordon Bell  
Karen Bennett  
Paula Bentley  
Karen Brooks  
Gabe Buck  
Don Campbell  
Cecil Chappell  
Aislynn Clayton  
Janis Creeden  
Jen Culligan  
Amelia Darling  
Jessica Darling  
Kimberly De Haan  
Connie Delarge  
Zoe Deligianis  
Mary Dench  
Eve Diemand  
Tracyllynn Dobbin  
Elizabeth Edwards  
Sarah Elliott  
Chelsea Feeney  
Barbara Finkelstein  
Beth Fischer  
Hayden Fischer  
Emily Frankruyter  
Rachel Frederick  
Leanne Garvey  
Keagan Goforth  
Marie Golbeck  
Louise Gorvett  
Melissa Graham  
Maureen Gratton  
Paige Groothuis  
Garrett Guymier  
Emma Haase  
Judy Hart  
Sherrie Hearn-Smith  
Aubrey Henderson  
Greg Hoggarth  
Judy Hoggarth  
Debra Holota  
Lisa Iowski  
Beth Jones  
Donna Karaz

**Ushers**  
Chris Adair  
Mubashira Ahmed  
Louise Allen  
Rick Alpe  
Glenn Archer  
Carol Arnett  
Emelia Auster  
Gloria Bates  
Ethan Bell  
Gordon Bell  
Karen Bennett  
Paula Bentley  
Karen Brooks  
Gabe Buck  
Don Campbell  
Cecil Chappell  
Aislynn Clayton  
Janis Creeden  
Jen Culligan  
Amelia Darling  
Jessica Darling  
Kimberly De Haan  
Connie Delarge  
Zoe Deligianis  
Mary Dench  
Eve Diemand  
Tracyllynn Dobbin  
Elizabeth Edwards  
Sarah Elliott  
Chelsea Feeney  
Barbara Finkelstein  
Beth Fischer  
Hayden Fischer  
Emily Frankruyter  
Rachel Frederick  
Leanne Garvey  
Keagan Goforth  
Marie Golbeck  
Louise Gorvett  
Melissa Graham  
Maureen Gratton  
Paige Groothuis  
Garrett Guymier  
Emma Haase  
Judy Hart  
Sherrie Hearn-Smith  
Aubrey Henderson  
Greg Hoggarth  
Judy Hoggarth  
Debra Holota  
Lisa Iowski  
Beth Jones  
Donna Karaz

**Ushers**  
Chris Adair  
Mubashira Ahmed  
Louise Allen  
Rick Alpe  
Glenn Archer  
Carol Arnett  
Emelia Auster  
Gloria Bates  
Ethan Bell  
Gordon Bell  
Karen Bennett  
Paula Bentley  
Karen Brooks  
Gabe Buck  
Don Campbell  
Cecil Chappell  
Aislynn Clayton  
Janis Creeden  
Jen Culligan  
Amelia Darling  
Jessica Darling  
Kimberly De Haan  
Connie Delarge  
Zoe Deligianis  
Mary Dench  
Eve Diemand  
Tracyllynn Dobbin  
Elizabeth Edwards  
Sarah Elliott  
Chelsea Feeney  
Barbara Finkelstein  
Beth Fischer  
Hayden Fischer  
Emily Frankruyter  
Rachel Frederick  
Leanne Garvey  
Keagan Goforth  
Marie Golbeck  
Louise Gorvett  
Melissa Graham  
Maureen Gratton  
Paige Groothuis  
Garrett Guymier  
Emma Haase  
Judy Hart  
Sherrie Hearn-Smith  
Aubrey Henderson  
Greg Hoggarth  
Judy Hoggarth  
Debra Holota  
Lisa Iowski  
Beth Jones  
Donna Karaz

**Ushers**  
Chris Adair  
Mubashira Ahmed  
Louise Allen  
Rick Alpe  
Glenn Archer  
Carol Arnett  
Emelia Auster  
Gloria Bates  
Ethan Bell  
Gordon Bell  
Karen Bennett  
Paula Bentley  
Karen Brooks  
Gabe Buck  
Don Campbell  
Cecil Chappell  
Aislynn Clayton  
Janis Creeden  
Jen Culligan  
Amelia Darling  
Jessica Darling  
Kimberly De Haan  
Connie Delarge  
Zoe Deligianis  
Mary Dench  
Eve Diemand  
Tracyllynn Dobbin  
Elizabeth Edwards  
Sarah Elliott  
Chelsea Feeney  
Barbara Finkelstein  
Beth Fischer  
Hayden Fischer  
Emily Frankruyter  
Rachel Frederick  
Leanne Garvey  
Keagan Goforth  
Marie Golbeck  
Louise Gorvett  
Melissa Graham  
Maureen Gratton  
Paige Groothuis  
Garrett Guymier  
Emma Haase  
Judy Hart  
Sherrie Hearn-Smith  
Aubrey Henderson  
Greg Hoggarth  
Judy Hoggarth  
Debra Holota  
Lisa Iowski  
Beth Jones  
Donna Karaz

**Ushers**  
Chris Adair  
Mubashira Ahmed  
Louise Allen  
Rick Alpe  
Glenn Archer  
Carol Arnett  
Emelia Auster  
Gloria Bates  
Ethan Bell  
Gordon Bell  
Karen Bennett  
Paula Bentley  
Karen Brooks  
Gabe Buck  
Don Campbell  
Cecil Chappell  
Aislynn Clayton  
Janis Creeden  
Jen Culligan  
Amelia Darling  
Jessica Darling  
Kimberly De Haan  
Connie Delarge  
Zoe Deligianis  
Mary Dench  
Eve Diemand  
Tracyllynn Dobbin  
Elizabeth Edwards  
Sarah Elliott  
Chelsea Feeney  
Barbara Finkelstein  
Beth Fischer  
Hayden Fischer  
Emily Frankruyter  
Rachel Frederick  
Leanne Garvey  
Keagan Goforth  
Marie Golbeck  
Louise Gorvett  
Melissa Graham  
Maureen Gratton  
Paige Groothuis  
Garrett Guymier  
Emma Haase  
Judy Hart  
Sherrie Hearn-Smith  
Aubrey Henderson  
Greg Hoggarth  
Judy Hoggarth  
Debra Holota  
Lisa Iowski  
Beth Jones  
Donna Karaz

**Ushers**  
Chris Adair  
Mubashira Ahmed  
Lou

# STAFF LIST

Stephen Kuhl  
Susan Kummer  
Terry Laing  
Martha Listman  
Cora Lopez  
Kevin Machado  
Lisa-Marie Machado  
Julio Martinez-Miranda  
Carol Mason  
Diana Matheson  
Holly Matthews  
Lorrie McFadden  
Bev Meyer  
Karen Mills  
Max Mitchell  
Linda O'Connor  
Cam Ohler  
Eileen Ohrling  
Wendy Orchard  
Sarah Oseni  
Georgia Peacock  
Amanda Phillips  
Valerie Pinder  
Kailey Pridham  
Nikkie Priestap  
Mary Rankin  
Pat Ranney  
Dale Ratcliffe  
Terry Raymond  
Pat Reavy  
Dolores Riehl  
Joan Sandwith  
Orlando Scott-Callow  
Janina Siwek  
Judy Smith  
Margaret Steinbach  
Susan Steven  
Terry Strasler  
Josh Taylor  
Larke Turnbull  
Lois Tutt  
Sharon Twamley  
Victoria VanDenBelt  
Denise Vanderwielen  
Milton van der Veen  
Peer Wahlquist  
Corson Winter  
Faye Wreford  
Susan Wright  
Caroline Yates  
Gavin Yeomans  
Zale Zimmer

*Parking Lot Attendants*  
Jim MacKinnon  
Thomas Neilson  
Ardeshir Sasani  
Norman Schenck  
Gavin Stephenson-  
Jackman  
Terry Strasler  
Bob Wells

**TICKETING & MEMBERSHIP**  
*Associate Director, Ticketing & Membership*  
Patrick King  
*Assistant Managers, Ticketing & Membership*  
Debbie Steinacker  
Christine Teeple

*Customer Service Coordinator*  
Bev Nicholson  
*Special Orders Coordinator*  
Colleen White

*Groups and Schools Coordinator*  
Kathy Partridge

*Supervisor, Ticketing & Membership*  
Sharon Poelstra

*Ticketing & Membership Representatives*  
Gay Allison  
MJ Baker  
Cindy Bissell  
Jason Colliver  
Susan Davis  
Paolo Dorazio  
Paul Duncan  
Martin Fielding  
Lori Hicks  
Marianne Hord  
Yvonne Hord  
Janice Kastner  
Skip Keith  
Anna Kowalchuk  
Meredith McCauley  
Janice Mitchell  
Cheryl Moses  
Tara Nimmo  
Barbara Redden  
Rod Rychliski  
Raphe St. Pierre  
Makenzie Stevens  
Sheila Taylor

**DISTRIBUTION CENTRE**  
*Mailroom Coordinator*  
Candy Brown

*Mailroom Assistant*  
Janet Wilson

## CAFÉS & CATERING

*Interim Associate Director, Food & Beverage*  
Victoria Parkinson  
*Executive Chef*  
Kendrick Prins

*Head Chef, Catering*  
Liz Lagerwerf

*Sous Chefs*  
Jessica Seguin  
Joseph Walsh

*Pastry Chef*  
Wendy Seguin

*Culinary Team*  
Ashlee Bennett  
Andrew Butler  
Joshua Christie  
Matti Conroy  
Brayden Gerber  
Roger Martin

Amy Pritchard  
Colin Rock  
Andrew Stanton  
Amanda Traynor-Propper  
Nicholas Wagner

*Greenroom Hosts*  
Alexander Franke  
Taite Marsden  
Corinne Montgomery  
Jodi Naklusk

*Bars & Events Manager*  
Reade Haslam

*Event Coordinator*  
Janine Metelski

*Bar Coordinator*  
Josie Muncaster  
Cameron Sprott

*Food & Beverage Administrator*  
Janice Pavelin

*Cafés & Catering Staff*  
Maureen Abbott  
Aiden Amadeus  
Sue Bidgood  
Erin Blaine  
Jane Brenneman  
Lisa Campbell  
Erin-Lee DeMarco  
Lynne DeWys  
Melissa Dolton  
Rachel Frederick  
Cassandra Hyde  
Rod Rychliski  
Kayla Jantzi  
Karen Kane  
Stephanie Kropf-Untuch  
Amanda Langis  
Aidy McCabe  
Yuyang Ni  
Lori Noon  
Natalie Sacco  
Megan Schaff  
Adam Steinbach  
Fraser Tamas  
Guy Thomas  
Russell Wagner  
Mindy Warkentin  
Anik Watson  
Alli Whittaker  
Mackenzie Willie  
Rozhin Yousefi

**STRATFORD FESTIVAL SHOPS**  
*Retail Operations Manager*  
Chris Hanington  
*Assistant Manager, Retail*  
Chaslyn Stevenson-  
Hastings  
*Avon Supervisor*  
Cindy Ramier  
*Festival Supervisor*  
Kim Switzer

*Sales Associates*  
Kristina Baron-Woods  
Austin Becker  
Dawn Bell  
George Bertwell  
Marcia Gibson  
Michele Gillan  
Shelly Gilson  
Theresa Gleadall  
Tania Harvey  
Roger Hathaway  
Karen Johnston  
Meredith Johnstone  
Sherry LeSouder  
Lauren Mathieson  
Ashley McGowan  
Shireen Sasani  
Kelsey Stephenson  
Alanna Zordrager

## CORPORATE SPONSORSHIP

*Associate Director of Sponsorship*  
Lorraine Patterson  
*Manager, Sponsorship & Advertising Sales*  
Heather Martin

## DIGITAL CONTENT

*Associate Director, Digital Content*  
Genna Dixon

*Digital Content Manager*  
Yash Harishi Chhabria

## MARKETING

*Marketing Director – Content and Editorial*  
Jennifer Lee

*Marketing Director – Promotion and Revenue*  
Paula Muncaster Walker

*Associate Director, Marketing*  
Carly Douglas

*Associate Director, Analytics*  
Jennifer Skelly

*Cultural Consultant*  
Indigenous Communities  
Summer Bressette

*Marketing & Promotions Manager*  
Sarah Crook

*Web Marketing Manager*  
Marissa Harley

*Groups, Schools & Outreach Manager*  
Drea Kerr

*Video Production Manager*  
Kaitlyn Krestiankova

*Social Media Manager*  
Isabela Gurjao Stille Curtis

*Graphic Design Studio Manager*  
Melinda Timmins

*Digital Marketing Manager*  
Saurabh Yadav

*Tessitura Administrator*  
Michele Keutsch

*Groups & Schools Officer*  
Joanne Schalk

*Marketing Automation Specialist*  
Duane Woods

*Senior Graphic Designer*  
Shelby Boyd

*Graphic Designer*  
Erin Edwards

*Reporting Coordinator*  
Ramandeep Kaur

*Meighen Forum Marketing Coordinator*  
Tanner Morton

*Marketing Content Creator*  
Heather McLeod

*Graphic Designer*  
Ashveena Shillichurn

*Marketing Administrator*  
Katie Clark

## PUBLICITY

*Publicity Director*  
Ann Swerdfager

*Communications Manager*  
Melissa Mae Shipley

*Publicity Assistant*  
Ben Thomas

# FOR ASSISTANCE AND ACCESSIBILITY

We're here to help. If you require assistance, please ask the House Manager or any other member of the Stratford Festival team.

# CAMERAS, CELL PHONES AND OTHER ELECTRONIC DEVICES

For the safety of the artists and in accordance with the intellectual property associated with the productions, all cameras, audio and video recorders must be turned off during the performance. In addition, please turn off all mobile devices, as their sounds and lights will disturb actors and other guests. If you require access to a mobile device for accessibility needs, please see the House Manager prior to the performance.

# FOOD AND DRINK

We offer auditorium-friendly cups for our beverages and invite you to bring your drink to your seat. Bottled water is also permitted; however, all snacks are to be enjoyed outside the auditorium.

# LATE ARRIVAL AND READMISSION

If you arrive late or leave the auditorium during the performance, we will make every effort to seat you at a suitable break. Please be advised that this may not be the seat you are ticketed for, depending on its location in the theatre. In the interim, or in the event we cannot reseat you safely, we invite you to watch the performance on our lobby monitors.

# FIRST AID

We take patron health and safety seriously. Any member of our team will coordinate first-aid assistance for you if required. Automated external defibrillators (AEDs) are available at all our venues.

# IN CASE OF EMERGENCY

In case of an evacuation, please follow the instructions of Stratford Festival staff, who will escort you to safety. If you discover a fire, please activate the fire alarm and notify a Stratford Festival team member.

# PROTECTING YOUR PRIVACY

To view our patron and donor privacy protection policy please visit [stratfordfestival.ca/Privacy](http://stratfordfestival.ca/Privacy).

## THANK YOU TO OUR VOLUNTEERS

The Stratford Festival acknowledges the members of The Friends of the Festival for their continued contributions. This dedicated group of volunteers provides thousands of hours of support annually. They can be found everywhere—welcoming patrons to the theatre, answering questions, working on special projects, assisting at Meighen Forum events and so much more! We are so grateful for all they contribute to making each season possible.

GUEST SERVICES

2023

# 2023 SEASON

## FESTIVAL THEATRE

KING LEAR

RENT

MUCH ADO ABOUT NOTHING

LES BELLES-SOEURS

## AVON THEATRE

MONTY PYTHON'S SPAMALOT

A WRINKLE IN TIME

FRANKENSTEIN REVIVED

## TOM PATTERSON THEATRE

GRAND MAGIC

RICHARD II

WEDDING BAND

## STUDIO THEATRE

CASEY AND DIANA

WOMEN OF THE FUR TRADE

LOVE'S LABOUR'S LOST

[stratfordfestival.ca](http://stratfordfestival.ca)

1.800.567.1600 | 519.273.1600



COVER: SEAN ARBUCKLE AND KRISTIN PELLERIN.  
PHOTOGRAPHY BY TED BELTON. STYLING BY MICHELLE BOHN. PHOTOGRAPHY ASSISTANT, NIGEL TANG.